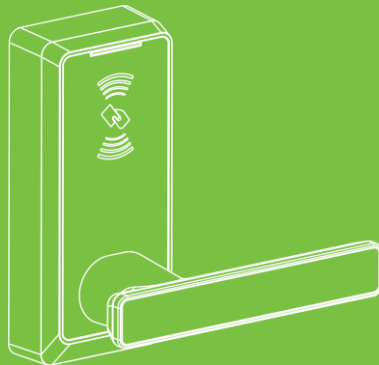


# User Manual

PL10R/ML10R

---

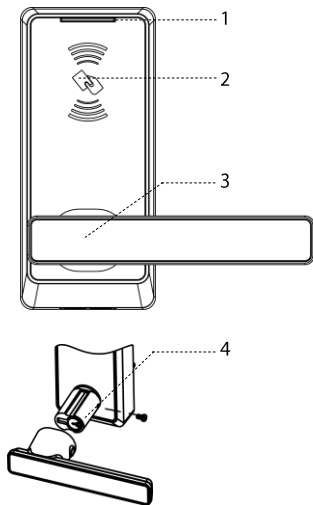
Version: 1.1



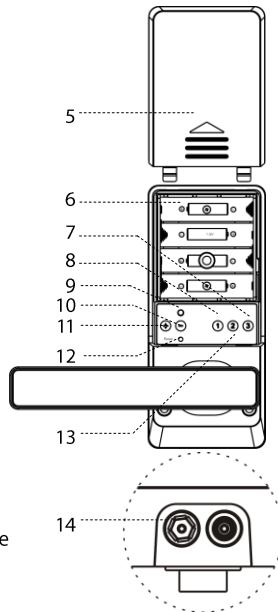
## Remarks

1. New lock is configured to grant ANY Mifare card access to unlock.
2. The lock is equipped with mechanical keys for manual unlocking. Remove mechanical keys from the package and keep them in a safe place.
3. To power up the lock, four alkaline AA batteries (not included) are required. Non-alkaline and rechargeable batteries ARE NOT RECOMMENDED.
5. The operation of lock setting has a stand-by time limit of 10 seconds; if there is no any activity, lock will shut off after 10 seconds.

# Appearance



- 1 LED
- 2 Card area
- 3 Handle
- 4 Mechanical key hole
- 5 Battery box cover
- 6 Battery Area
- 7 Button ③ / Temporary User
- 8 Button ① / Admin user
- 9 Back LED
- 10 Button ⊖ / Delete user
- 11 Button ⊕ / Add user
- 12 Reset Button
- 13 Button ② / Normal User
- 14 9V Emergency battery interface



# Profile

## User Introduction

User Type	Capacity	Privilege
Administrator	10	Add/delete users; Enable Normal Open; Unlock the door
Normal User	60	Unlock the door; Enable Normal Open
Temporary User	20	Unlock the door; Enable Normal Open

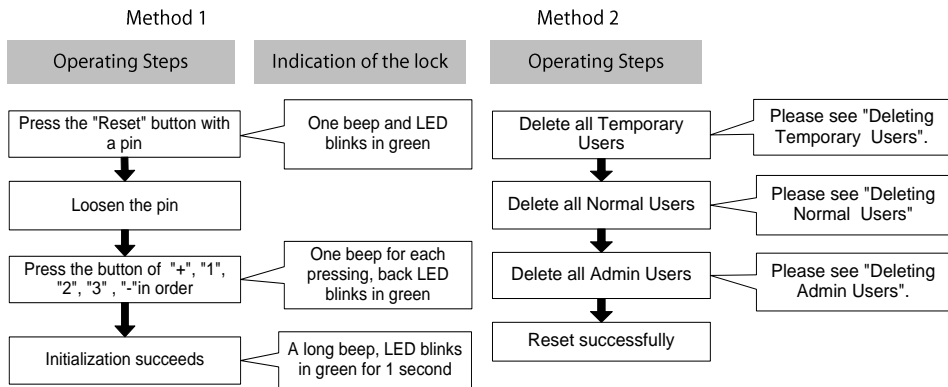
## Button Definition

Buttons	Function	Other functions
⊕	Add Users	
⊖	Delete Users	
①	Admin User Group	Enable Normal Open
②	Normal User Group	
③	Temporary User Group	

## Lock Status Indication

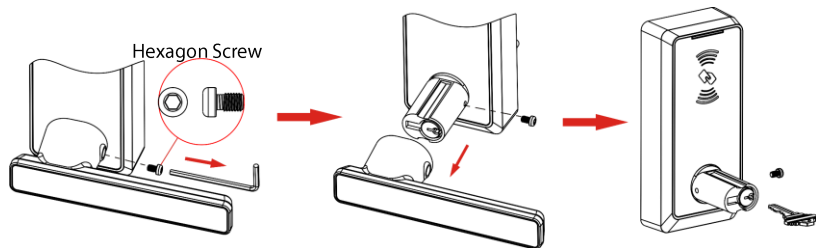
Lock Status	Indication
Successful Operation	1 beep and LED blinks in green
Failed Operation	2 beeps and LED blinks in red
Low battery	7 beeps and LED blinks in red for 7 times
Unlocking	1 beep and electric engine makes a rolling sound for the first time, which indicates that the door is open.
Locking	Electric engine makes a rolling sound for the second time, which indicates that the door is closed.

## Lock Initialize

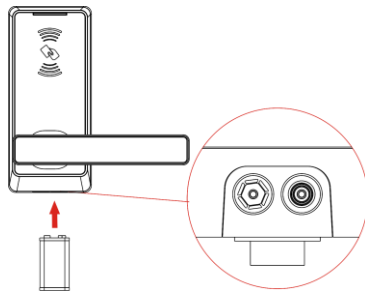


**Note:** The lock will be restored to factory defaults after initialization, and the door can be opened with any mifare card.

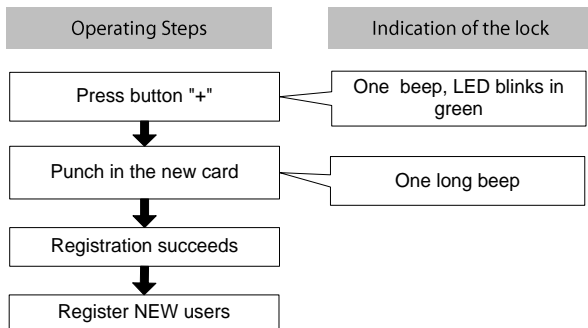
How to use mechanical key?



How to use 9V emergency battery?



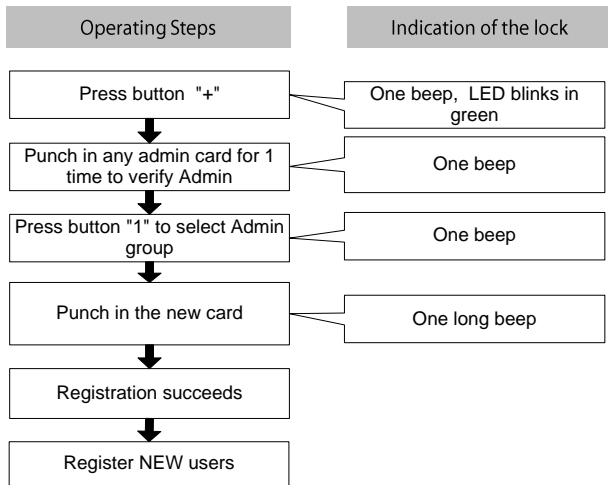
## Registering First Admin



- Note:**
1. The first user will be the first Admin automatically in default setting.
  2. Admin group supports 10 users; you can still register 9 new Admins in the next step.
  3. The operating steps of registering new users: press button 1/2/3 to select user group, and then punch in one new card to continue registering new user.

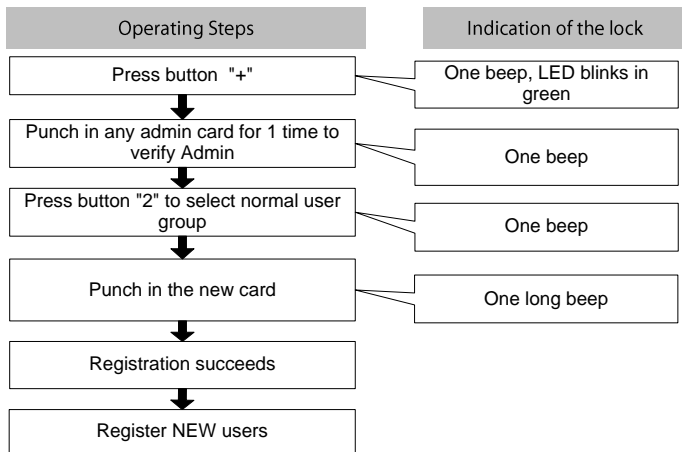


## Registering Other Admin



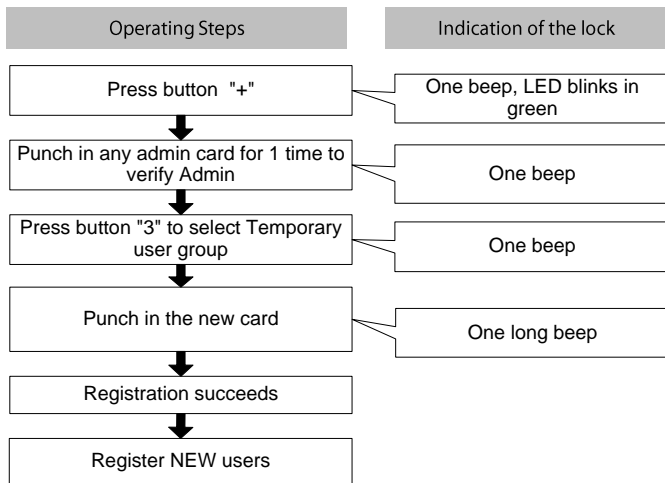
- Note:**
1. Admin group supports 10 users; you can still register 9 new Admin in this step.
  2. The operating steps of registering new users: press button 1/2/3 to select user group, and then punch in one new card to continue registering new user.

## Registering Normal User



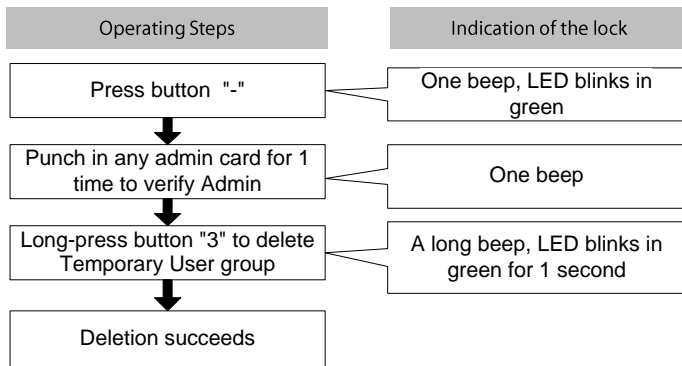
- Note:**
1. Normal User group supports 60 users.
  2. The operating steps of registering new users: press button 1/2/3 to select user group, and then punch in one new card to continue registering new user.

## Registering Temporary User



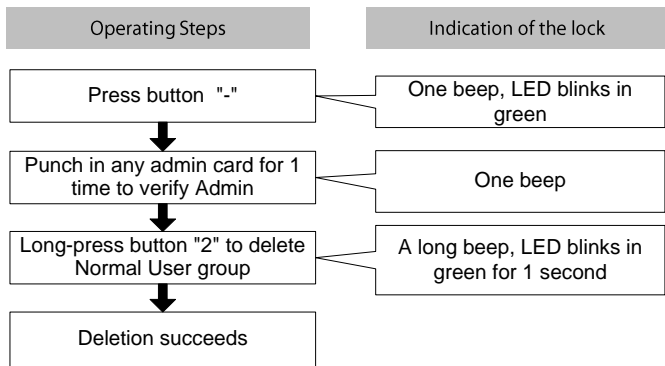
- Note:** 1. Temporary User group supports 20 users.  
2. The operating steps of registering new users: press button 1/2/3 to select user group, and then punch in one new card to continue registering new user.

## Deleting Temporary User Group



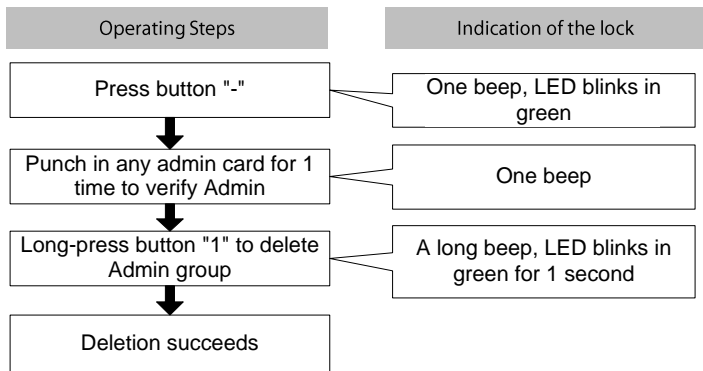
**Note:** All deleting operations are only valid for group.

## Deleting Normal User Group



**Note:** All deleting operations are only valid for group.

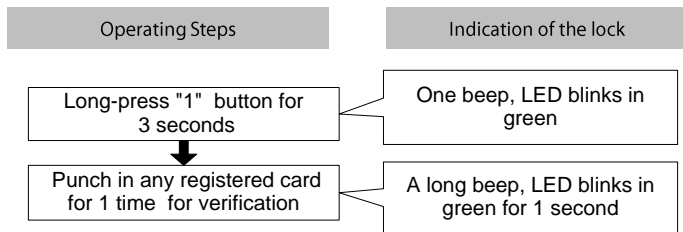
## Deleting Admin Group



**Note:** All deleting operations are only valid for group.

## Enabling/Disabling Normal Open

Enabling Normal Open:



Disabling Normal Open:

Punch in any registered card for 1 time to disable it.