



BioFace B1 Series

Linux-Based Hybrid-Biometric Access Control & Time and Attendance Terminal with Full Spectrum of Authentication Options



Facial Recognition



RFID



Fingerprint



QR Code

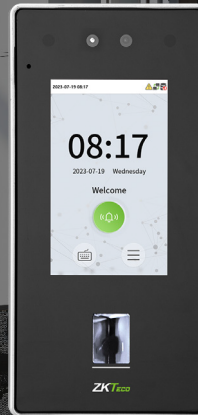


IP65 dust & waterproof rating

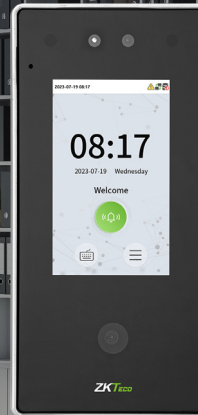


HD Video Door Phone

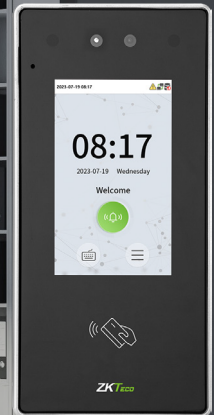
Compatible with



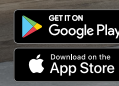
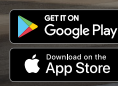
BioFace B1



BioFace B1-QR



BioFace B1-RFID



The BioFace B1 series uses intelligent engineering facial recognition algorithms and the latest computer vision technology, featuring a video intercom function.

What sets the BioFace B1 apart is its 4-inch color LED touch screen, a 2MP binocular camera, a built-in microphone, and a speaker for two-way video communication. There are two ways to use video intercom functions. Firstly, users can have a video phone through the ZSmart app when connected to the internet. Secondly, the terminal can connect the indoor station via SIP protocol.

The BioFace B1 series can also integrate with the ZKBioAccess Mobile Page to support Dynamic QR codes for access control or time and attendance protocols. Furthermore, the BioFace B1 series incorporates the ultimate anti-spoofing algorithm for facial recognition, protecting most fake photos and video attacks. The terminal also supports specialized QR modules such as QR code, PDF417, Data Matrix, MicroPDF417, and Aztec.

Features

- Visible light facial recognition technology and in-glass fingerprint verification.
- Visible light facial recognition in dimly lit environment even without supplement light.
- Full spectrum of authentication methods: support facial recognition/ fingerprint verification/ scramble QR Code/ Card/ Password (Virtual Keypad).
- Supports multiple RFID modules: 125 kHz ID card / 13.56MHz IC card / ID & IC card.
- Enlarged Capacity: 3,000 (facial recognition) / 3,000 (fingerprint) / 3,000 (RFID card) / 200,000 transactions.
- HD video door phone via ZSmart mobile app / SIP protocol.
- Reached IP65 protection rating with waterproof and dustproof.
- Compatible with wired doorbell and wireless doorbell (optional).

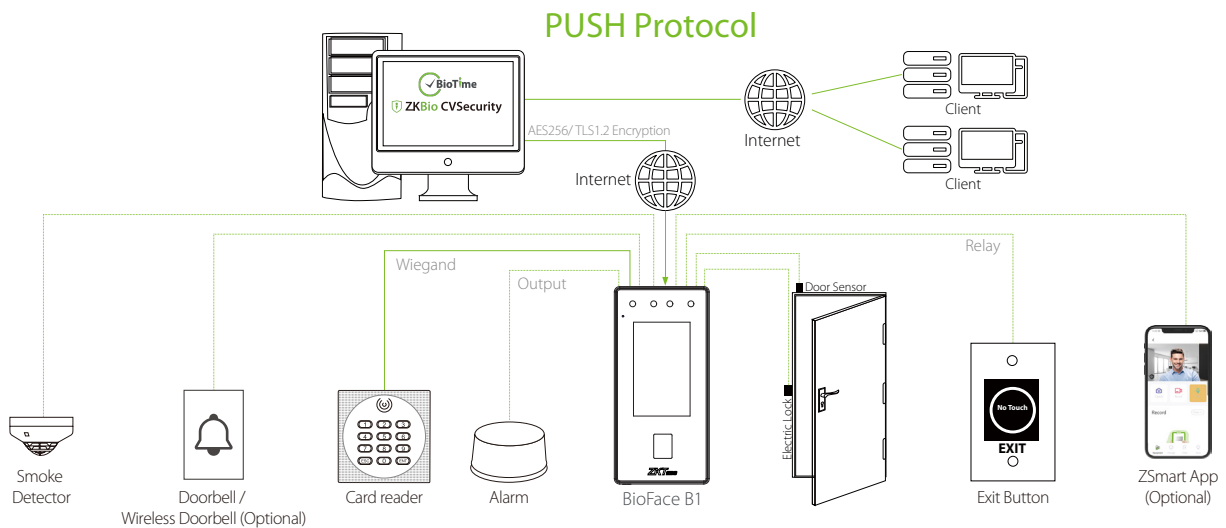
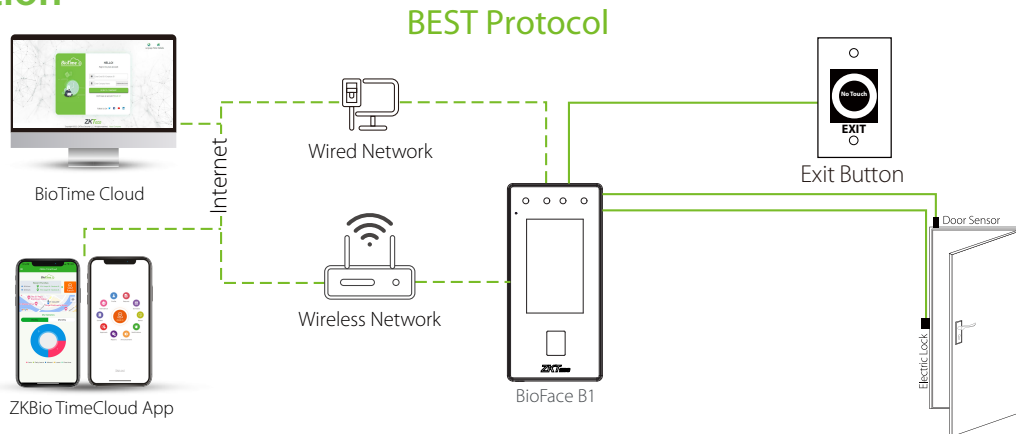
* NOTE: Wi-Fi, bluetooth and wireless doorbell are all optional functions, coming soon!

Specifications

Model	BioFace B1	BioFace B1-QR	BioFace B1-RFID
Display	4" @ TFT Color Touch LED Screen (480*800)		
Camera	Binocular Camera @ 2MP		
Operation System	Linux		
Hardware	CPU: Dual Core@1GHz RAM: 1GB; ROM: 8GB Speaker: 8 ohm@1 W Microphone: *1 (Sensitivity: -32dB / Omni-directional / Signal-to-Noise Ratio: 58dB / Impedance: 2.2kΩ) Fingerprint Sensor: In-Glass Fingerprint		
Authentication method	Face / Fingerprint / Card / Password (Virtual Keypad)	Face / Scramble QR Code / Card / Password (Virtual Keypad)	Face / Card / Password (Virtual Keypad)
User Capacity	3,000(1:N) (Standard) / 10,000 (1:N) (Optional)	3,000 (1:N) (Standard) / 10,000(1:N) (Optional)	3,000 (1:N) (Standard) / 10,000(1:N) (Optional)
Face Template Capacity	3,000 (1:N) (Standard) / 6,000 (1:N) (Optional)	3,000 (1:N) (Standard) / 6,000 (1:N) (Optional)	3,000 (1:N) (Standard) / 6,000 (1:N) (Optional)
Fingerprint Template Capacity	3,000 (1:N) (Standard) / 6,000 (1:N) (Optional)	/	/
Card Capacity	3,000 (1:N) (Standard) / 10,000(1:N) (Optional)	3,000 (1:N) (Standard) / 10,000(1:N) (Optional)	3,000 (1:N) (Standard) / 10,000(1:N) (Optional)
Transaction Capacity	200,000 (1:N)	200,000 (1:N)	200,000 (1:N)
Max. User Password Length	8 Digits		
Biometric Verification Speed	less than 0.35 second (Facial Recognition) less than 0.5 second (Fingerprint Recognition)		
Touchless Biometric Recognition Distance	30cm to 170cm @Face		
False Acceptance Rate (FAR) %	≤0.01% (Facial Recognition) ≤0.0001% (Fingerprint)	≤0.01% (Facial Recognition)	≤0.01% (Facial Recognition)
False Rejection Rate (FRR) %	≤0.02% (Facial Recognition) 0.01% (Fingerprint)	≤0.02% (Facial Recognition)	≤0.02% (Facial Recognition)
Biometric Algorithm	ZKFace V3.9 & ZKFinger V10.0	ZKFace V3.9	ZKFace V3.9
Card Type	ID Card@125 kHz (Optional) HID Prox@125 kHz (Optional) IC Card@13.56 MHz (Optional) Felica Card@13.56 MHz (Optional) Optional Multi-Tech Module: Module1: ID & IC & DESFire EV1/ EV2; (125 kHz & 13.56 MHz Dual Frequency)	ID Card@125 kHz (Optional) HID Prox@125 kHz (Optional) IC Card@13.56 MHz (Optional) Felica Card@13.56 MHz (Optional) Optional Multi-Tech Module: Module1: ID & IC & DESFire EV1/ EV2; (125 kHz & 13.56 MHz Dual Frequency)	ID Card@125 kHz (Standard) HID Prox@125 kHz (Optional) IC Card@13.56 MHz (Optional) Felica Card@13.56 MHz (Optional) Optional Multi-Tech Module: Module1: ID & IC & DESFire EV1/ EV2; (125 kHz & 13.56 MHz Dual Frequency)
QR Code	/	Dynamic QR codes on the ZKBioAccess Mobile Page, PDF417, Data Matrix, MicroPDF417, Aztec scanning in third-party development projects	/
Communication	TCP/IP*1 Wi-Fi (IEEE802.1a/b/g/n/ac) @ 2.4 GHz / 5G GHz (Coming soon) Bluetooth: BLE5.0 (Coming soon) Wiegand (Input & Output)*1 RS485: ZKTeco RS485*1 USB: Type A (USB Drive Only)*1 Aux Inputs *1, Electric Lock*1, Door Sensor*1, Exit Button*1, Alarm output*1, Wired Doorbell*1		
Standard Functions	ADMS, DST, 14-digit User ID, T9 Keyboard (Input), Photo Capture, Event Photo Capture, Record Query, Tamper Switch Alarm, Automatic Status Switch, Multiple Verification Methods, Anti-Passback, Wired Doorbell, Schedule Bell, HTTPs / SSH Backend Access, AC Push and TA Push Protocol Switch		
Optional Functions	Wi-Fi, SRB, WorkCode, Video Door Phone, SIP Protocol, Wireless Doorbell (Coming soon)		
Power Supply	DC 12V 3A (Optional)		
Operating Temperature	-5°C to 45°C		
Operating Humidity	10% to 90% RH (Non-condensing)		
Dimensions	183 mm*88 mm*20.5 mm (L*W*H)		

Gross Weight	0.503kg
Net Weight	0.453 Kg
Supported Software	Software: BioTime 8.5 / BioTime Cloud / ZKBio CVSecurity Mobile App: ZKBioTime / ZKBio TimeCloud / ZSmart
Installation	Wall-mount (Compatible with Asian Gang-box / Single Gang-Box)
Ingress Protection Rating	IP65 (waterproof and dustproof)
Certifications	ISO14001, ISO9001, CE, FCC, RoHS

Configuration



Dimensions (mm)

