

# User Manual

ZKP8008 Thermal Receipt Printer

---

Version: 1.0

Date: February 2019



## About this manual

Thank you for your purchase of our company's 80MM thermal printer.

This manual can help you learn to use this product. Please read this manual before use, and safekeeping, so that all the use of this product can read it.

## Note

Due to our constant efforts to improve and upgrade the product's function and performance, our company reserves the right to change the hardware and software specifications in the manual without prior notice.

If you find any errors or missions in the contents of this manual, please tell us or our agent, thank you very much.

Without the prior written permission of our company, the contents of the relevant manual attached to the product shall not be reproduced, transmitted, transcribed, stored, etc.

# Contents

Statement.....	1
Safety Tips.....	1
Application Area.....	2
Package.....	2
Printer Features.....	2
Printer Parameters.....	3
Printer Connection.....	4
Install the Print Paper.....	4
Switch, Key Name, Indicator and Function .....	5
Self-test.....	6
Hex Number System .....	6
Printer Restore Factory Settings.....	6
Cutter Stuck Maintenance.....	6
Printer Driver .....	7
Printer Repair and Maintenance .....	9
Failure Analysis.....	10

## Statement

This product is type A product, may cause the radio interference in the living environment, in this case, the user need to protect the interference with effective protection measures.

## Safety Tips

- Do not disassemble the printer personally, please read this manual before use.
- The printer should be installed in a solid place to avoid vibration or impact damage to the printer.
- Do not store and use the printer in the environment of high temperature, high humidity, and heavy pollution.
- The power adapter of the printer should be connected to the grounding socket, should be avoided to connected to the same socket with large motor or other can lead to voltage fluctuation equipment, or may lead abnormal to printer and even damage to the printer.
- Please use the standard power adapter to the printer.
- When plug connection line, please make sure the printer power is closed.
- When the printer is printing, please do not open the paper cover, otherwise it may cause unexpected situation, and even damage the printer.
- After printing, print head is still at high temperature, please do not touch, to avoid burning.
- Please do not use dissolved substances, such as: benzene, thinner or alcohol wipe to clean the printer casing. At the same time, please do not use corrosive chemicals and detergent to contact printer. To avoid damage to the printer.
- Please use our company approved or regular factory produced printing paper, otherwise it may lead to poor print quality, and even damage the printer core.
- Thermal printing paper printing letter save time is related to thermal printing paper quality, if you want to print the long-term preservation bills, please choose a long-term thermal paper.
- The printer is only suitable for using in the altitude below 2000M.
- The printer is only suitable for use in non-tropical climates.

## Application Area

- Electronic cash register POS system printing
- Electronic transfer system printing
- Sports, postal, civil aviation bill printing
- Query, service system bill printing
- Catering industry bill printing
- Tax bill printing

## Package

1. Printer 1PC
2. Adapter 1SET
3. Power line 1PC
4. Paper roll 1ROLL
5. Data line 1PC
6. User manual 1PC
7. Driver CD 1PC

## Printer Features

- 220 mm / second ultra high-speed printing, improve the printing efficiency
- Support wall hanging function, meet the special environment printing
- Support 80MM large diameter roll
- Support kitchen printing and Internet printing
- Support printer monitoring function, to avoid losing bills
- Using 100M Ethernet card, connect printer faster, to avoid losing bills
- Recover printing after network disconnection, to avoid losing bills
- Support LOGO Graphical download and print
- Support order come remind and error alarm
- Support Multi language printing

- Compatible with ESC/POS print instruction mode
- Support Windows, Linux, Android and IOS system printing

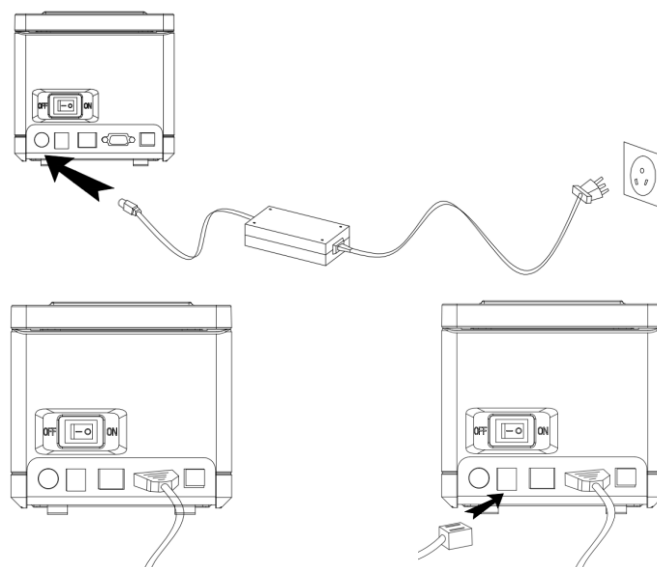
## Printer Parameters

Item		Parameters
Print parameters	Printing Method	Thermal Line
	Printing width	72mm
	Resolution	512 Dots/Line (8dots/mm, 203dpi)
	Print speed	220mm/Second
	Interface	USB+COM; USB+Internet
	Line Spacing	3.75mm (Can adjust line spacing by command)
	Line No.	FontA-48Lines/FontB-64Lines/Simple, traditional Chinese-24 lines
	Character	Standard GB18030 simplified / traditional Chinese Fonts
	Character Size	ANK character, Font A: 1.5×3.0mm (12×24 dots); Font B: 1.1×2.1mm (9×17 dots) Simplified/Traditional Chinese 3.0×3.0mm (24×24 dots)
Bar code Character	Extended character set	PC437/Katakana/PC850/PC860/PC863/ PC865/West Europe/Greek/Hebrew/ East Europe/Iran/WPC1252/PC866/PC852/ PC858/IranII/Latvian/Arabic/PT151,1251/ PC737/WPC/1257/Thai Vietnam/PC864/ PC1001/(Latvian)/(PC1001)/(PT151,1251)/ (WPC1257)/(PC864)/(Vietnam)/(Thai)
	Bar code	1D bar code: UPC-A/UPC- E/JAN13(EAN13)/JAN8(EAN8)/CODE39/ITF/CODABAR/CODE93/CODE128
Graphics printing	Graphics printing	Supports bitmap download and print
Cutter	Cutter Function	Full cut/Half cut
Paper	Type	Thermal
	Width	79.5±0.5mm
	Diameter	≤80mm
	Feed method	Easy feed (Clameshell feed)

Print commands	Commands	ESC/POS
Power	Power Adaptor	Input: AC 100V-240V,50~60Hz Output: DC 24V/2.5A
	Cash Drawer output	DC 24V/1A
Buffer	NV Flash	256K bytes
Physical characteristics	Weight	1.2KG
	Dimension	190*145*135(MM)
Environment	Working	Temp: 5 ~ 45°C, Humidity: 10 ~ 80%
	Storage	Temp: -10 ~ 50°C, Humidity: 10 ~ 90% (No dew)
Reliability parameter	Print Head Life	100KM (print density≤12.5)
	Cutter Life	1000,000 times
Software	Driver	Android, IOS, Linux, Windows

## Printer Connection

1. Connect the power adapter cable to the printer power supply interface.
2. Connect the data cable to the printer's interface.
3. The cashier drawer cable connected with printer interface.

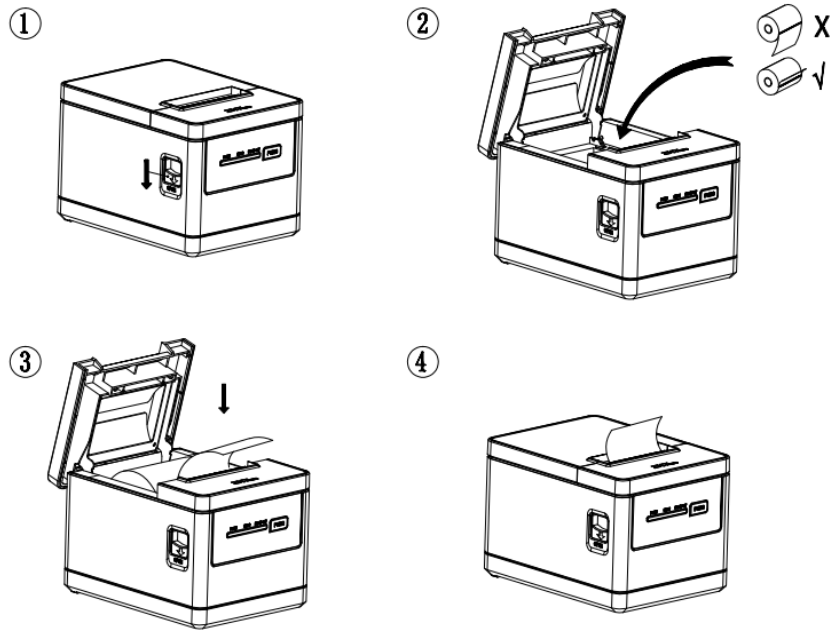


## Install the Print Paper



80MM series thermal printer uses easy paper structure, convenient to install paper.

1. Pressing down the cover open button, open the printer cover.
2. Put thermal print paper in the paper holder according to the picture below.
3. Pull a little paper out of the warehouse.
4. Tear excess printing paper.



**Note:** Take care of the roll direction, if reverse direction, the content won't be print out.

## Switch, Key Name, Indicator and Function

### 1 power switch

The switch can turn on and off the printer power supply.

### 2 (feed) key (FEED)

Press the button can feed, if keep on press this button will continue to feed.

### 3 (short paper) light (Paper)

This indicator and the Error lamp flashing at the same time indicates that the printer is short of paper, this indicator and the Error lamp off means the printer has paper.

### 4 (power) lamp (power)

The indicator light on indicates that the printer is connected to the power supply, this light off indicates that the printer power is off.

## **5 (error) light (Error)**

When the printer is missing paper, print head overheating, the lid is not closed well etc., the indicator lights will flashing.

## **Self-test**

Printer self-test method are as follows: when the printer connected to the power adapter, press (feed) key and open the printer power at the same time, released the button after approximately 2 seconds, printers will print out current printer status and settings.

## **Hex Number System**

When the printer connected to the power adapter, press (feed) key and open the printer power at the same time, released the button after approximately 6 seconds. The printer prints out the words "Dump Hexadecimal".

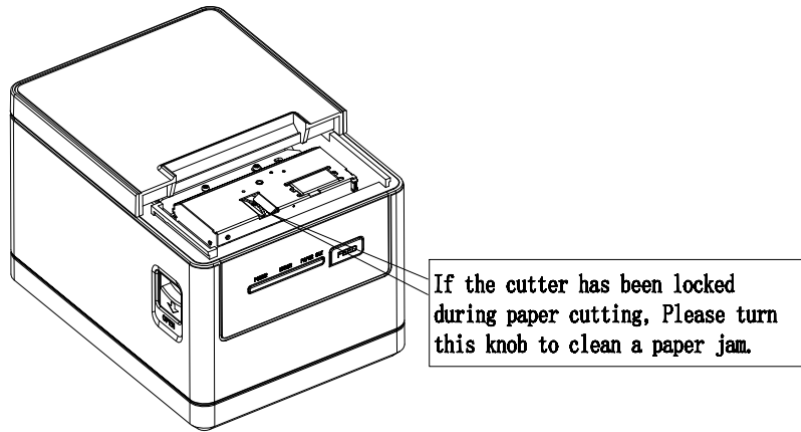
## **Printer Restore Factory Settings**

When the printer connected to the power adapter, press (feed) key and open the printer power at the same time, released the button after approximately 10 seconds, printer is restored to factory settings.

## **Cutter Stuck Maintenance**

Solution 1: Press the power switch to turn off the printer power, restart, let the cutter back.

Solution 2: Open the printer cover, rotating the printing head cutting knife gear, let the cutter return to its initial position, open the cover and install paper roll then can print normally.



**Note:** Do not force open the cover, as to avoid unrecoverable damage to the print head and the cutter.

## Printer Driver

80MM series thermal printer driver mode has two kinds, one is using the port for directly drive printing, one is in stall driver in Windows system to print.

### 1. Port direct drive

In this way, do not need to install the driver, only need to output the character (instructions and data) directly to a port, and to achieve character conversion of print by internal printer hard character library, using port directly drive, make the print control more convenient.

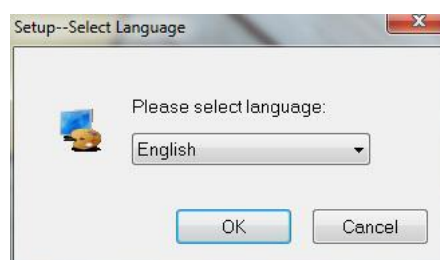
If you use port direct drive mode, you need to use the print command set to control the printer's printing.

### 2. Install driver in windows system

To install the driver in CD in windows, you only need to call the driver in the program to achieved print. In this way, in fact there is a Windows driver to turn the character into a graphic dot matrix way to print.

Windows driver installation steps and instructions:

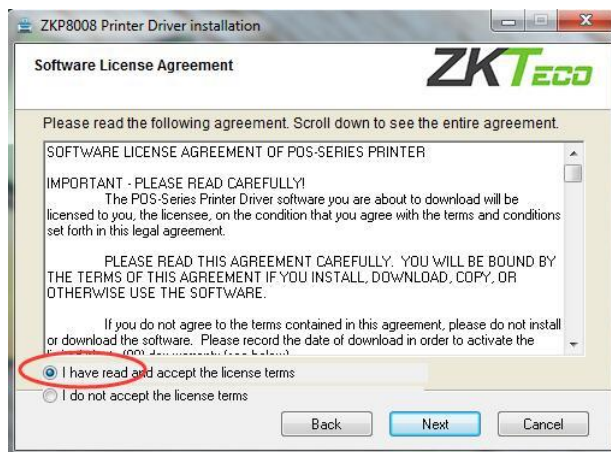
Double click the driver setup  **ZKP8008-Driver.exe**  
Printer Driver  
Printer Ltd , click "ok".



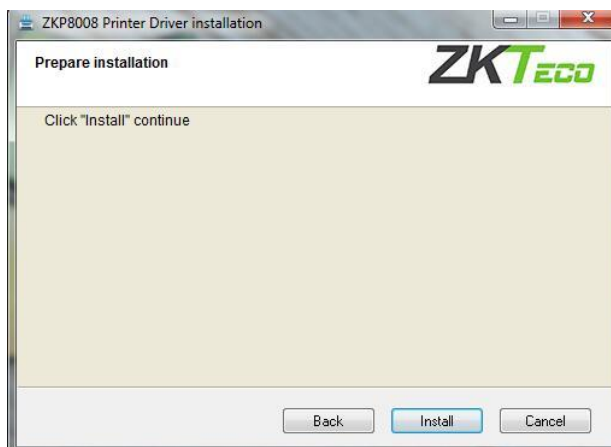
1) Click the "next step".



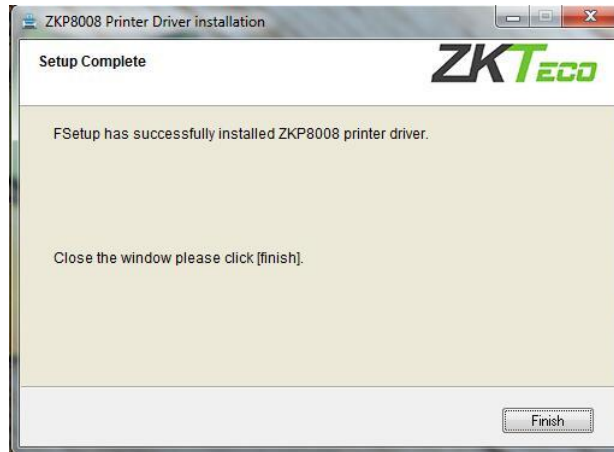
2) Select "I accept this Agreement", click "next".



3) Click "install".



4) Click "finish" to complete the driver installation.



## Printer Repair and Maintenance

1. Printer external and warehouse cleaning: please use a wet cloth gently to wipe the printer surface and internal paper warehouse.
2. Printer core clean: printer core must be clean on time, especially the quality of printing is decline, cleaning methods are as follows: put cotton dipped in anhydrous alcohol and gently wipe the printer core ceramic parts as shown in the picture below until clean enough.
3. If find water inside printer, please immediately disconnect the printer power, and dry the printer naturally.

## Failure Analysis

Failure phenomenon	Failure cause	Solution
Printer paper indicator and Error indicator flashing at same time, and make a Di Di... beep sound	Printer lack of paper	Install paper correctly
Printer error flashing and make a Di Di...beep sound	1. The printer head is too hot 2. The flip not closed well	1. Open the cover and dissipate heat fully then go on printing. 2. Cover the flip well.
When the printer prints only paper run but not print	Print paper install reverse	Please install the print paper for an opposite direction
The printer print fuzzy	The print head not clean for a long time	Put cotton dipped in anhydrous alcohol and gently wipe the printer core ceramic parts until clean enough
	The character color in thermal paper no good	Please choose high quality thermal paper
There is no response of printer	The power adaptor not connected	Please check power adaptor is connected well or not, power switch is turn on or not
Printer can self-test, but cannot print online	Driver port selection error	Please select the correct print driver port based on the actual connection port
Printer serial port does not print or print garbled	Bit rate selection error	Please set the COM baud rate according to the COM info on self-check page

ZK Building, Wuhe Road, Gangtou, Bantian, Buji Town,  
Longgang District, Shenzhen China 518129

Tel: +86 755-89602345

Fax: +86 755-89602394

[www.zkteco.com](http://www.zkteco.com)

