

# ZKBio CVSecurity

All-in-One Web-Based Integrated Security Platform

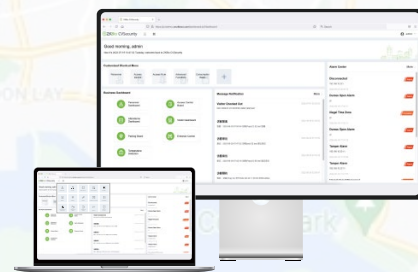
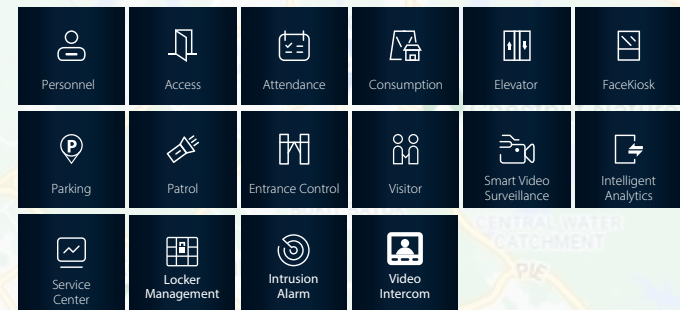
## Features



# ZKBio CVSecurity

All-in-One Web-Based Biometric Security Solution

ZKBio CVSecurity provides a comprehensive web-based security platform with the adoption of hybrid biometric and computer vision technology. It contains multiple modules: Personnel, Access Control, Time & Attendance, Consumption, Elevator, Visitor, Parking Management, Patrol, Entrance Control, FaceKiosk, Smart Video Surveillance, Intelligent Analytics, Locker Management, Intrusion Alarm, Video Intercom, Service Center and System Management.



High-Security Mechanism  
TLS1.2 and powered by  
RSA2048 & AES256 Encryption

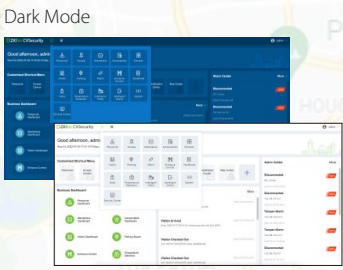
Access the  
ZKBioCV Security  
From Anywhere  
in the World



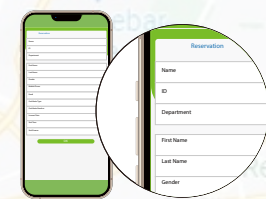
## Introduction guide of ZKBioCV Security



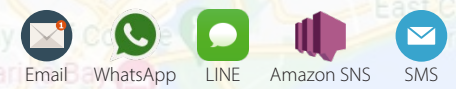
### Light Mode and Dark Mode Available



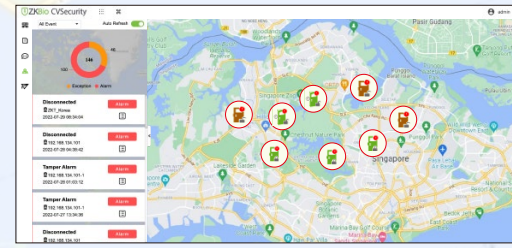
### Self-registration of Staffs and Visitors



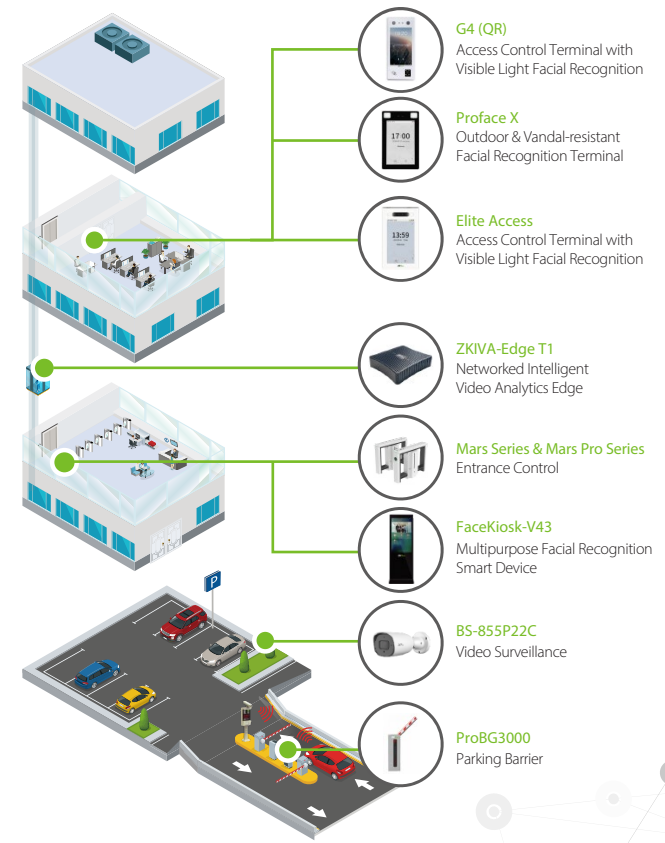
### Email, WhatsApp, LINE, Amazon SNS, SMS Integration



### Alarm Center

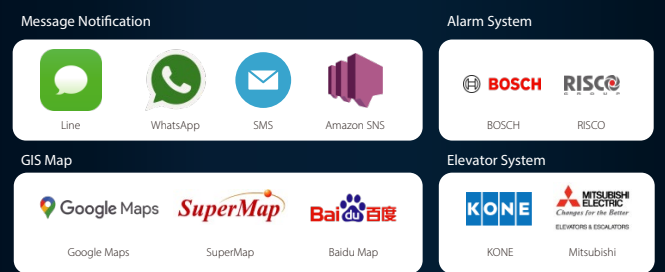


## Software and Product Highlights



## Integrated System

ZKBio CVSecurity has already been integrated with various systems and platforms, including different notifications, map system, Digifort/ Arctoc/ C2P video management system and BOSCH/ RISCO intrusion alarm system.



# ZKBio CVSecurity

All-in-One Web-Based Biometric Security Solution



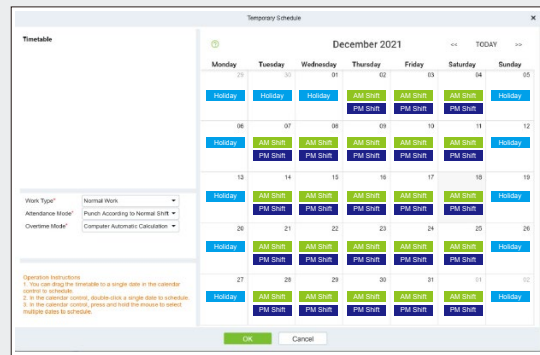
## Access Control

- Different access levels for different users
- Events notification (Email, SMS, Amazon SNS, WhatsApp, Line)
- Multi-biometric identification (Fingerprint, face, palm and finger vein)



## Time and Attendance

- Flexible shifts, multi-level OT, cross day shift,
- Multi-level approval
- Automatic attendance report generation



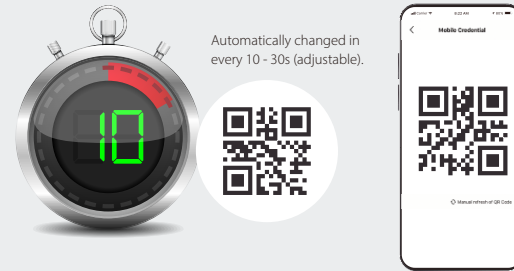
## FaceKiosk

- FaceKiosk Advertisement Management
- Managing Facekiosk Series Devices
- Time and Attendance Management
- Displaying Attendance Details



## Visitor

- Visitor self-service pre-registration
- Dynamic QR code to access authorized doors
- Automatically changed in every 10 to 30 seconds (adjustable).



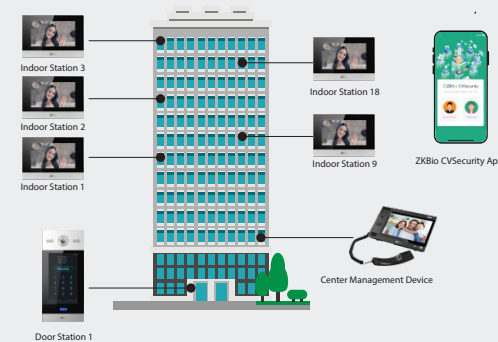
## Entrance Control

- Device Online Upgrade
- Real-Time Monitoring
- Entrance Control Access Rules



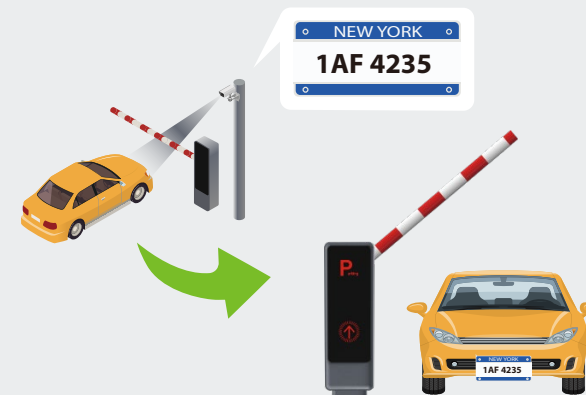
## Video Intercom

- Streamlined centralized management
- Efficient permission management
- Real-Time monitoring of all video door phone devices in the building
- Batch Management of Residents' Access Control Permissions



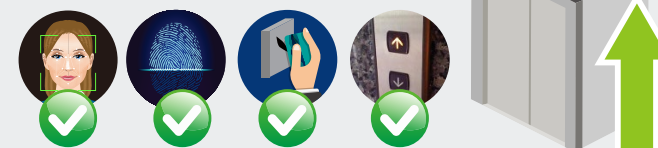
## Parking Management

- License plate recognition
- Monitor and managing vehicles at all exits and entrances
- Two-factor authentication of driver identity (RFID/QR code/Biometric) and vehicle verification (UHF/LPR)



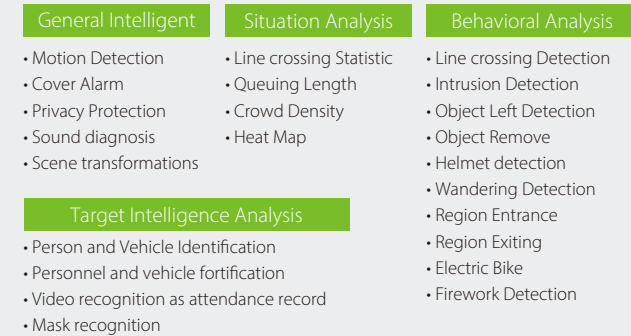
## Elevator Control

- Supports different access levels for different users
- Multi-biometric identification (Fingerprint, face, palm and finnger vein)
- Support various linkage mothed and linkage video recording



## Smart Video Surveillance

- Real-time preview, PTZ control, video playback
- Intelligent camera alerts
- Supports searching of users and vehicles
- Visualized Intercom
- Vehicle Recognition
- Video Patrol
- Visible Watermark
- Camera Alarm Monitoring and Processing in the System



## Intelligent Analytics

- People control ans people counting
- Advanced target search
- Attendance checking
- Tailing detection
- Allow list and block list real-time monitoring
- User-defined dashboard
- Support ZKIVA-Edge to implement advanced intelligent analysis algorithms, such as firework detection, fight detection, fall detection, etc

