

# P200 & P260

## Palm recognition Multi-Biometric T&A Terminal with Access Control Functions



P serial is a multibiometric identification time & attendance and access control terminal, which can connect with third party electric lock, door sensor, and exit button etc.

With the latest palm/fingerprint identification algorithm and streamlined technology, it can hold 600 palm templates and up to 10,000 fingerprint templates without dividing into groups.

Communicating via Wi-Fi, TCP/IP, and USB host, it ensures a smooth connection and data transfer. Amazing verification speed and intuitive operation process make it popular. Elaborately designed and finely processed, it matches your slap-up office perfectly.

### Features



Build in PoE



1 channel auxiliary input for smoke detector connection



Build in battery, up to 4 hours



Multiple communicate mode, Wi-Fi, TCP/IP, 3G, USB host



Stable operation under strong light source



Advance access function including Lock connection, alarm, Wiegand input/output

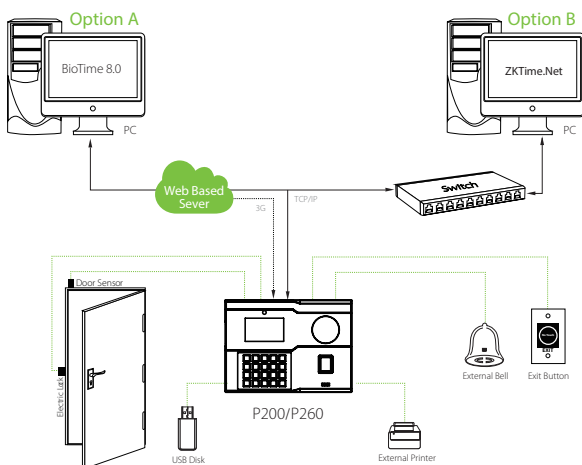


600 Palms, 3,000 Fingerprints,  
10000 Cards and 100,000 records

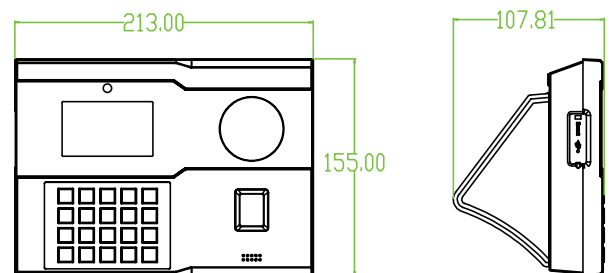
# Specifications

<b>Product</b>		P200	P260
<b>Main</b>	Biometric	Fingerprint and Palm	
	RF Optional	125kHz EM / 13.56MHz MF	
<b>Capacity</b>	Max User(1:N)	10,000	
	Max Fingerprint (1:N)	3,000 standard / 10,000 Optional	
	Max Palm (1:N)	600	
<b>Interface</b>	TCP/IP	10/100 M	
	PoE Optional	802.3 at 28W	
	Wi-Fi	802.11 B/G/N	
	3G Optional	WCDMA	
	USB	USB 2.0 (Host)	
	RS232	1 port for external printer	
	RS485		1 port for FP reader
	Relay		2 relays
	Wiegand		1ch In & Out
<b>Input</b>		1 Input	
<b>Hardware</b>	LCD	3.0" Color LCD	
	Sound	24-bit	
	Operating Temp.	0 °C- 45 °C	
	Operating Humidity	20% ~ 80%	
	Power	DC 12V 1.5A	DC 12V 3A
	Dimensions(W x H x D mm)	213*155*107.81mm	
	Certificates	CE, FCC, RoHS	
<b>Function</b>	Standard	Automatic Status Switch, Self-Service Query, DST, T9 Input, 9 Digit User ID, Scheduled Bell, Photo ID Lock, sensor, Exit button	
	Optional	ID / IC, ADMS	
<b>Compatibility</b>		ZKTime.net 3.0, ZKAccess 3.5, ZKBio Time	

## Configuration



## Dimensions (mm)



V2.0 2022.03.23