

# User Guide

## ZKBioVMS Plugin

Date: April 2020

Doc Version: 1.0

English

Thank you for choosing our product. Please read the instructions carefully before operation. Follow these instructions to ensure that the product is functioning properly. The images shown in this manual are for illustrative purposes only.



For further details, please visit our Company's website  
[www.zkteco.com](http://www.zkteco.com).

## Copyright © 2020 ZKTECO CO., LTD. All rights reserved.

Without the prior written consent of ZKTeco, no portion of this manual can be copied or forwarded in any way or form. All parts of this manual belong to ZKTeco and its subsidiaries (hereinafter the "Company" or "ZKTeco").

### Trademark

**ZKTeco** is a registered trademark of ZKTeco. Other trademarks involved in this manual are owned by their respective owners.

### Disclaimer

This manual contains information on the operation and maintenance of the ZKTeco equipment. The copyright in all the documents, drawings, and more in relation to the ZKTeco supplied equipment vests in and is the property of ZKTeco. The contents hereof should not be used or shared by the receiver with any third party without express written permission of ZKTeco. The contents of this manual must be read as a whole before starting the operation and maintenance of the supplied equipment. If any of the content(s) of the manual seems unclear or incomplete, please contact ZKTeco before starting the operation and maintenance of the said equipment.

It is an essential pre-requisite for the satisfactory operation and maintenance that the operating and maintenance personnel are fully familiar with the design and that the said personnel have received thorough training in operating and maintaining the machine/unit/equipment. It is further essential for the safe operation of the machine/unit/equipment that personnel have read, understood, and followed the safety instructions contained in the manual.

In case of any conflict between terms and conditions of this manual and the contract specifications, drawings, instruction sheets or any other contract-related documents, the contract conditions/documents shall prevail. The contract specific conditions/documents shall apply in priority.

ZKTeco offers no warranty, guarantee or representation regarding the completeness of any information contained in this manual or any of the amendments made thereto. ZKTeco does not extend the warranty of any kind, including, without limitation, any warranty of design, merchantability, or fitness for a particular purpose.

ZKTeco does not assume responsibility for any errors or omissions in the information or documents which are referenced by or linked to this manual. The entire risk as to the results and performance obtained from using the information is assumed by the user.

ZKTeco in no event shall be liable to the user or any third party for any incidental, consequential, indirect, special, or exemplary damages, including, without limitation, loss of business, loss of profits, business interruption, loss of business information or any pecuniary loss, arising out of, in connection with, or relating to the use of the information contained in or referenced by this manual, even if ZKTeco has been advised of the possibility of such damages.

This manual and the information contained therein may include technical, other inaccuracies or typographical errors. ZKTeco periodically changes the information herein which will be incorporated into new additions/amendments to the manual. ZKTeco reserves the right to add, delete, amend, or modify the information contained in the manual from time to time in the form of circulars, letters, notes, etc. for better operation and safety of the machine/unit/equipment. The said additions or amendments are meant for improvement /better operations of the machine/unit/equipment and such amendments shall not give any right to claim any compensation or damages under any circumstances.

ZKTeco shall in no way be responsible (i) in case the machine/unit/equipment malfunctions due to any non-compliance of the instructions contained in this manual (ii) in case of operation of the machine/unit/equipment beyond the rate limits (iii) in case of operation of the machine and equipment in conditions different from the prescribed conditions of the manual.

The product will be updated from time to time without prior notice. The latest operation procedures and relevant documents are available on <http://www.zkteco.com>.

If there is any issue related to the product, please contact us.

### ZKTeco Headquarters

**Address** ZKTeco Industrial Park, No. 26, 188 Industrial Road,  
Tangxia Town, Dongguan, China.

**Phone** +86 769 - 82109991

**Fax** +86 755 - 89602394

For business related queries, please write to us at: [sales@zkteco.com](mailto:sales@zkteco.com).

To know more about our global branches, visit [www.zkteco.com](http://www.zkteco.com).

## About the Company

ZKTeco is one of the world's largest manufacturer of RFID and Biometric (Fingerprint, Facial, Finger-vein) readers. Product offerings include Access Control readers and panels, Near & Far-range Facial Recognition Cameras, Elevator/floor access controllers, Turnstiles, License Plate Recognition (LPR) gate controllers and Consumer products including battery-operated fingerprint and face-reader Door Locks. Our security solutions are multi-lingual and localized in over 18 different languages. At the ZKTeco state-of-the-art 700,000 square foot ISO9001-certified manufacturing facility, we control manufacturing, product design, component assembly, and logistics/shipping, all under one roof.

The founders of ZKTeco have been determined for independent research and development of biometric verification procedures and the productization of biometric verification SDK, which was initially widely applied in PC security and identity authentication fields. With the continuous enhancement of the development and plenty of market applications, the team has gradually constructed an identity authentication ecosystem and smart security ecosystem, which are based on biometric verification techniques. With years of experience in the industrialization of biometric verifications, ZKTeco was officially established in 2007 and now has been one of the globally-leading enterprises in the biometric verification industry owning various patents and being selected as the National High-tech Enterprise for 6 consecutive years. Its products are protected by intellectual property rights.

## About the Manual

This manual introduces the operations of ZKBioVMS Plugin product.

All figures displayed are for illustration purposes only. Figures in this manual may not be exactly consistent with the actual products.






## Document Conventions

Conventions used in this manual are listed below:

### GUI Conventions

For Software	
Convention	Description
Bold font	Used to identify software interface names e.g. <b>OK</b> , <b>Confirm</b> , <b>Cancel</b>
>	Multi-level menus are separated by these brackets. For example, File > Create > Folder.
For Device	
Convention	Description
< >	Button or key names for devices. For example, press <OK>
[ ]	Window names, menu items, data table, and field names are inside square brackets. For example, pop up the [New User] window
/	Multi-level menus are separated by forwarding slashes. For example, [File/Create/Folder].

### Symbols

Convention	Description
	This implies about the notice or pays attention to, in the manual
	The general information which helps in performing the operations faster
	The information which is significant
	Care taken to avoid danger or mistakes
	The statement or event that warns of something or that serves as a cautionary example.

## Table of Contents

<b>1</b>	<b>VMS PLUGIN.....</b>	<b>6</b>
<b>2</b>	<b>REQUIRED ESSENTIALS.....</b>	<b>6</b>
2.1	HARDWARE REQUIREMENTS.....	6
2.2	VMS PLUGIN REQUIREMENTS.....	6
<b>3</b>	<b>INSTALLATION.....</b>	<b>7</b>
<b>4</b>	<b>VMS CLIENT CONFIGURATION.....</b>	<b>11</b>
4.1	CLIENT SERVER CONFIGURATION.....	11
4.2	CONFIGURE THE VMS SERVER ON THE VMS WEBPAGE(ZKBIOSECURITY).....	12
4.3	LOGIN TO THE VMS CLIENT.....	13

## 1 VMS Plugin

VMS Plugin (client program) are software application functions enables support to multiple functions such as device management, preview, playback, event reception, decoding management, video alarm, log query, and access control video linkage. It provides flexible and diverse deployment solutions to meet the needs of various environments in small and medium-sized projects.

- VMS Plugin is necessary to be installed before using VMS function in ZKBioSecurity.
- VMS Plugin can be installed on the same server with ZKBioSecurity or different servers.
- VMS Plugin should be in running state if the user wants to use the VMS function normally.

## 2 Required Essentials

The following are the basic specifications that need to be set before the installation of the VMS Plugin.

### 2.1 Hardware Requirements

**CPU:** Intel(R) Core (TM) i5 6500 @ 2.6GHz or above.

**RAM:** 8GB or above.

**Memory:** Available space of 30GB or above.

We recommend to use NTFS hard disk partition as the software installation directory.

**GPU:** NVIDIA GTX750 or above.

**Monitor Resolution:**1024\*768 pixels or above.

### 2.2 VMS Plugin Requirements

#### Supported Operating System

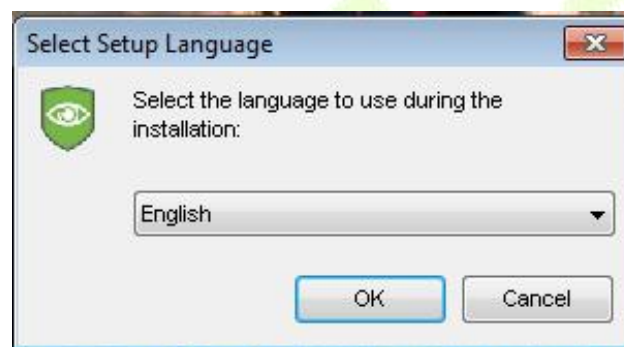
- Windows7
- Windows8
- Windows8.1
- Windows10
- Windows Server 2008
- Windows Server 2012
- Windows Server 2016
- Windows Server 2019.

## Supported Database

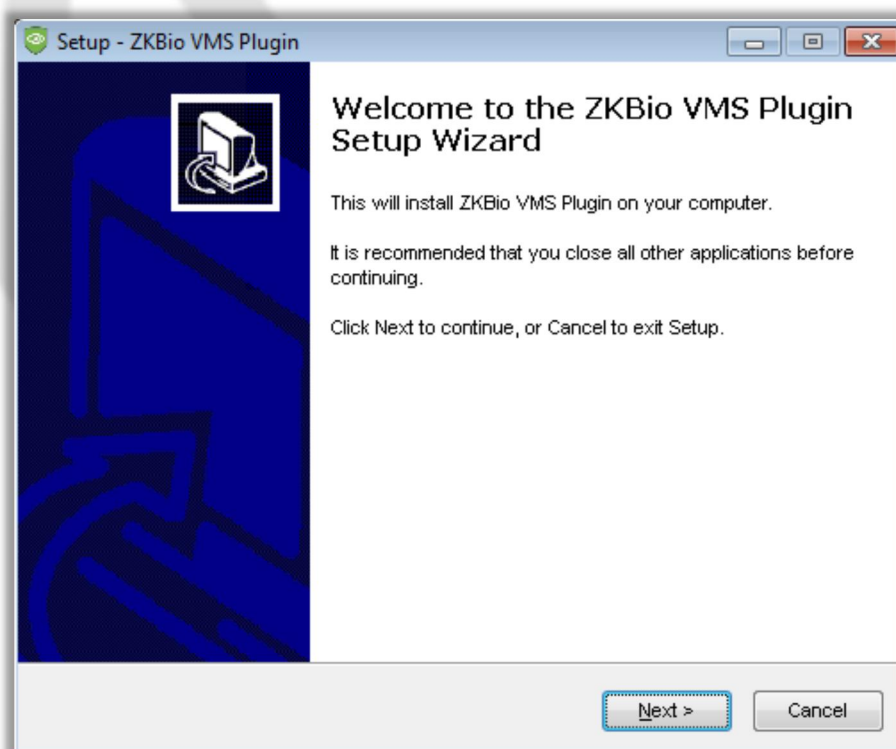
- SQLite
- MYSQL

## 3 Installation

- Right-click **setup.exe** file to initiate the installation.
- On the **Select Setup Language**, select the preferred language (**English** or **Simplified Chinese**) for installation from the drop-down list.

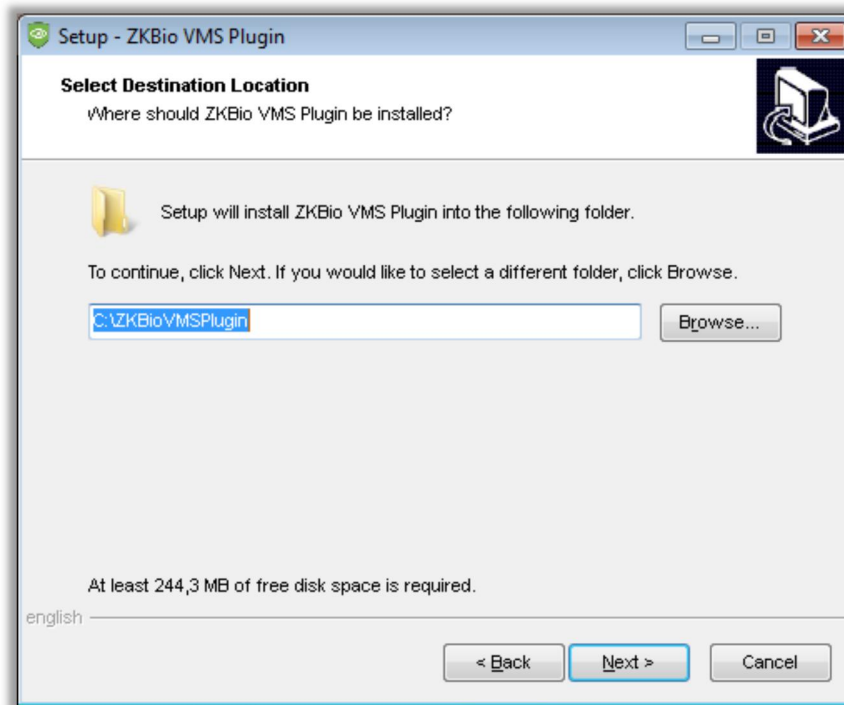


- The installation setup wizard will guide through the process. Follow the on-screen instructions and click **Next** to continue.

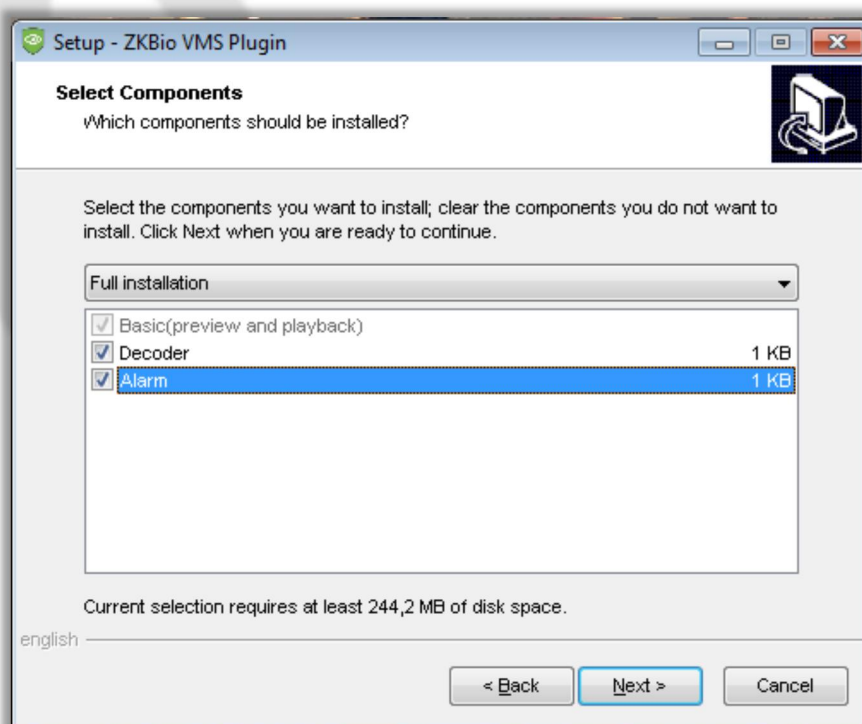




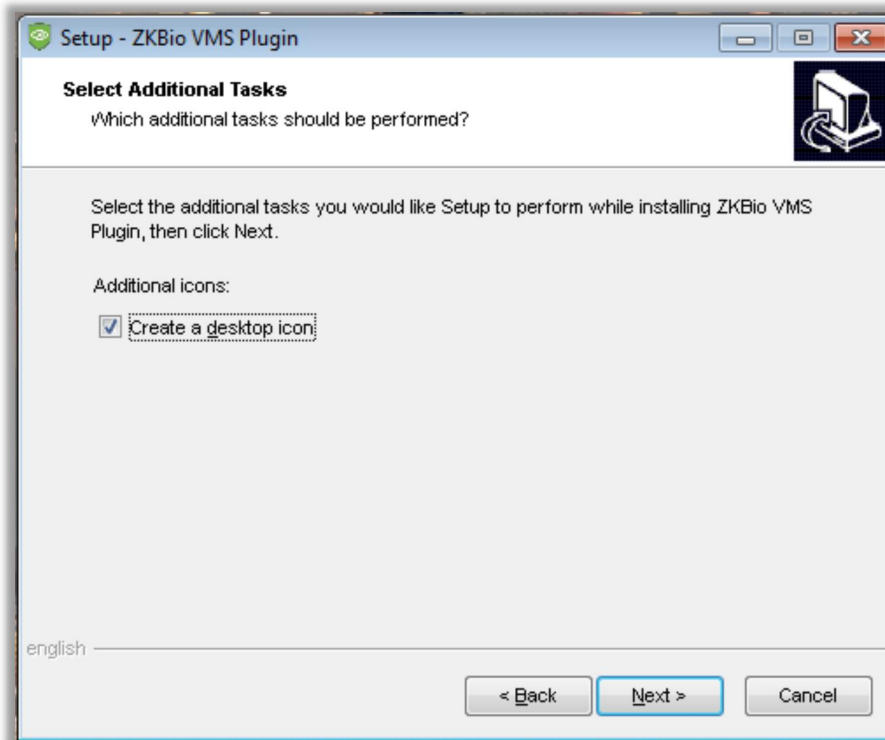
- On the **Select Destination Location** page, click **Browse** to select the required location and then click **Next** to save the installation path.



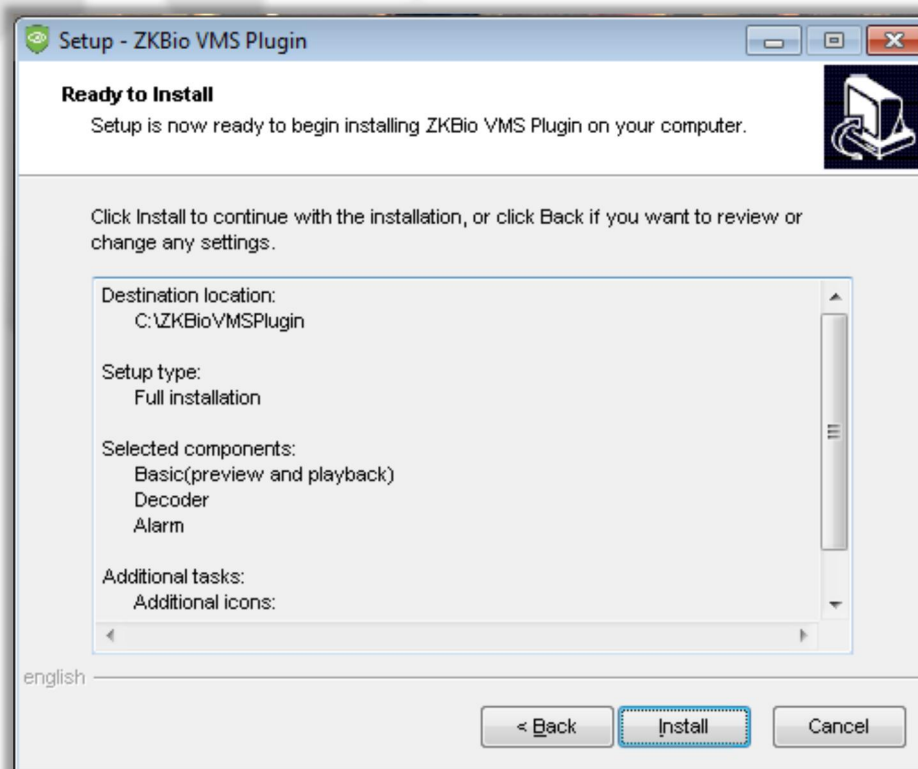
- On the **Select Components** page, select the required components for installation, and then click **Next** to continue.



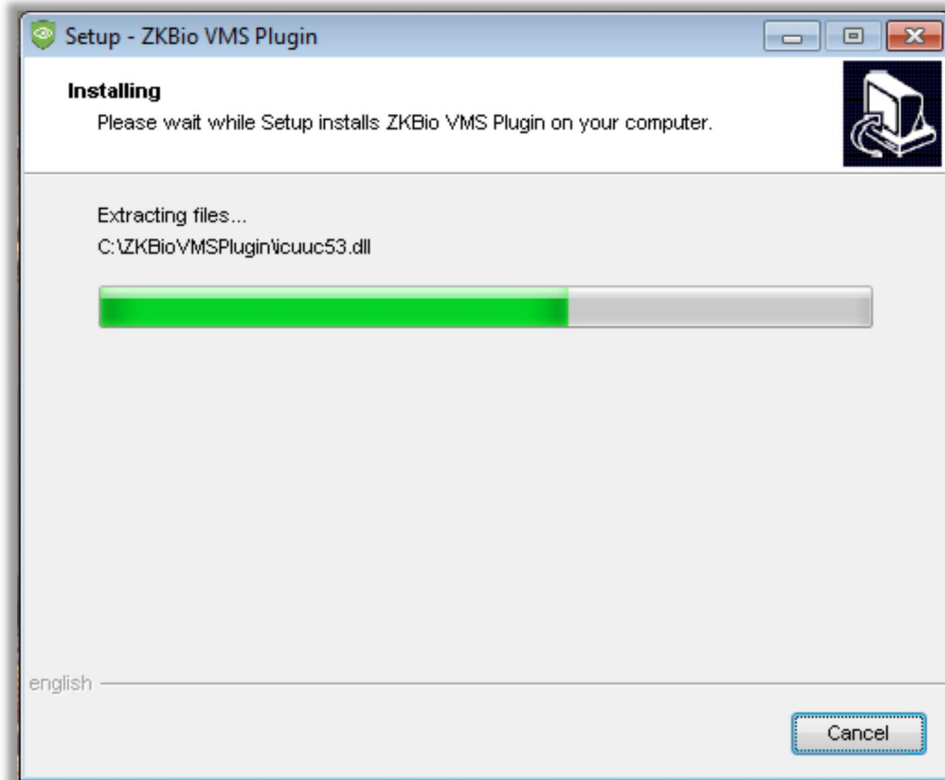
- On the **Select Additional Tasks page**, select the **Addition icons** check box to create a desktop icon, and then click **Next** to continue.



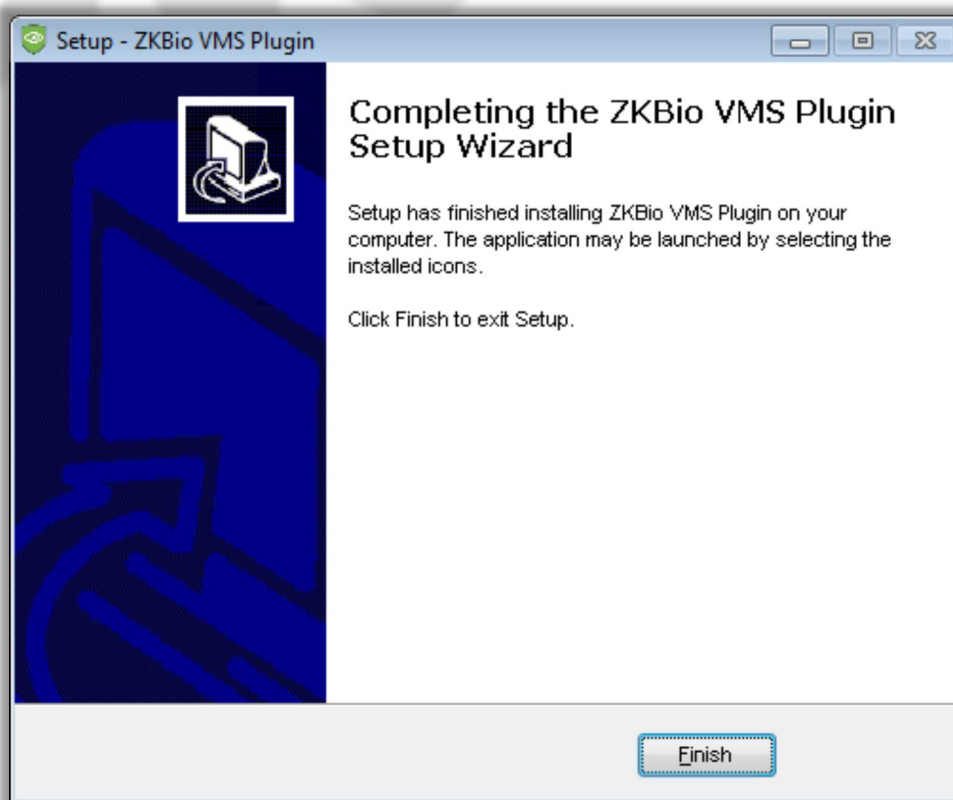
- On the **Ready to Install** page, click **Install** to continue the installation process.



- The progress status of the **VMS Plugin** installation will be viewed as below.



- On the **Completing the ZKBio VMS Plugin Setup Wizard** page, click **Finish** to complete the installation.



## 4 VMS Client Configuration

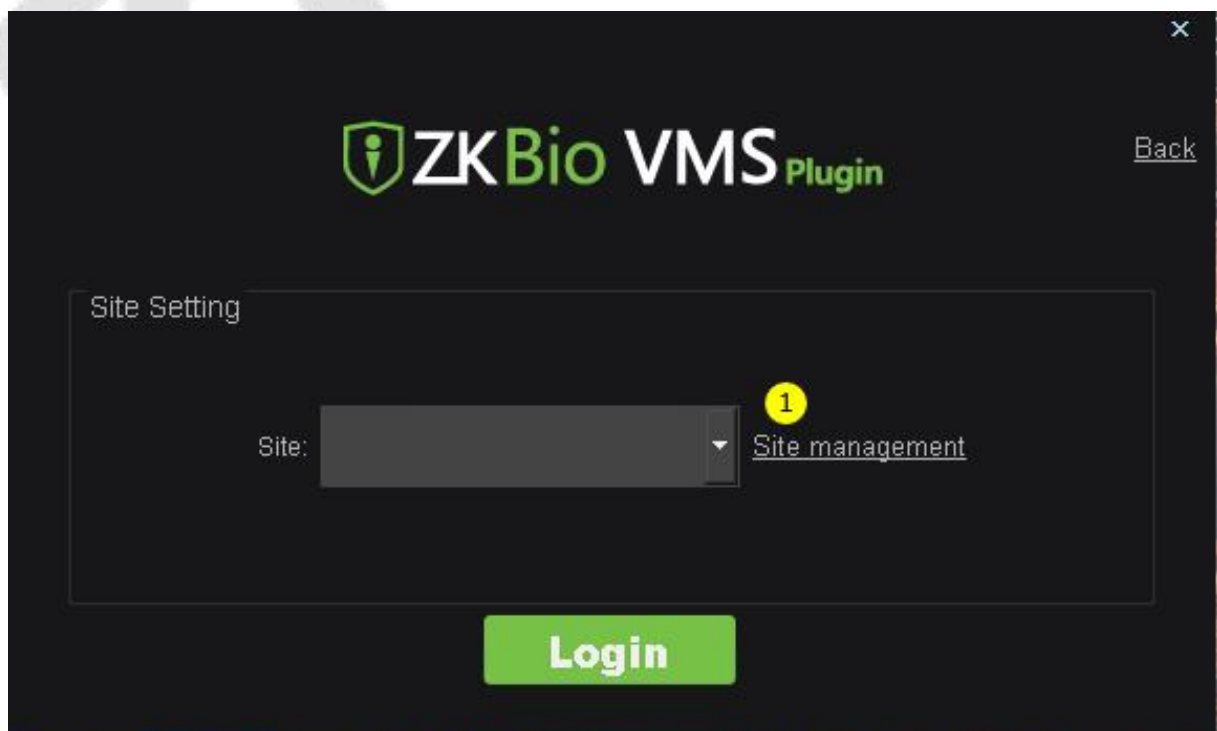
After the installation of VMS client, double-click to open the client application.

### 4.1 Client Server Configuration

- On the **Login** page of the ZKBio VMS Plugin, click **Choose site** to go to the **Site Setting** interface.

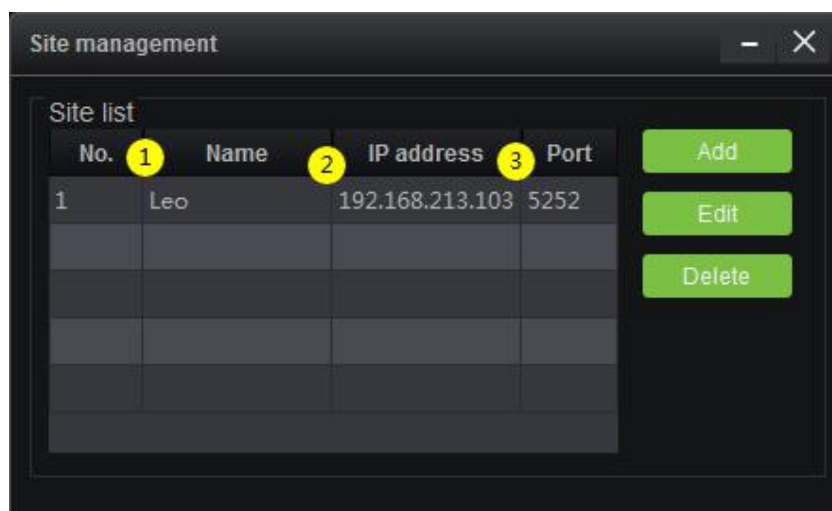


- On the **Site Setting** interface, click **Site management** to go to the site configuration settings.



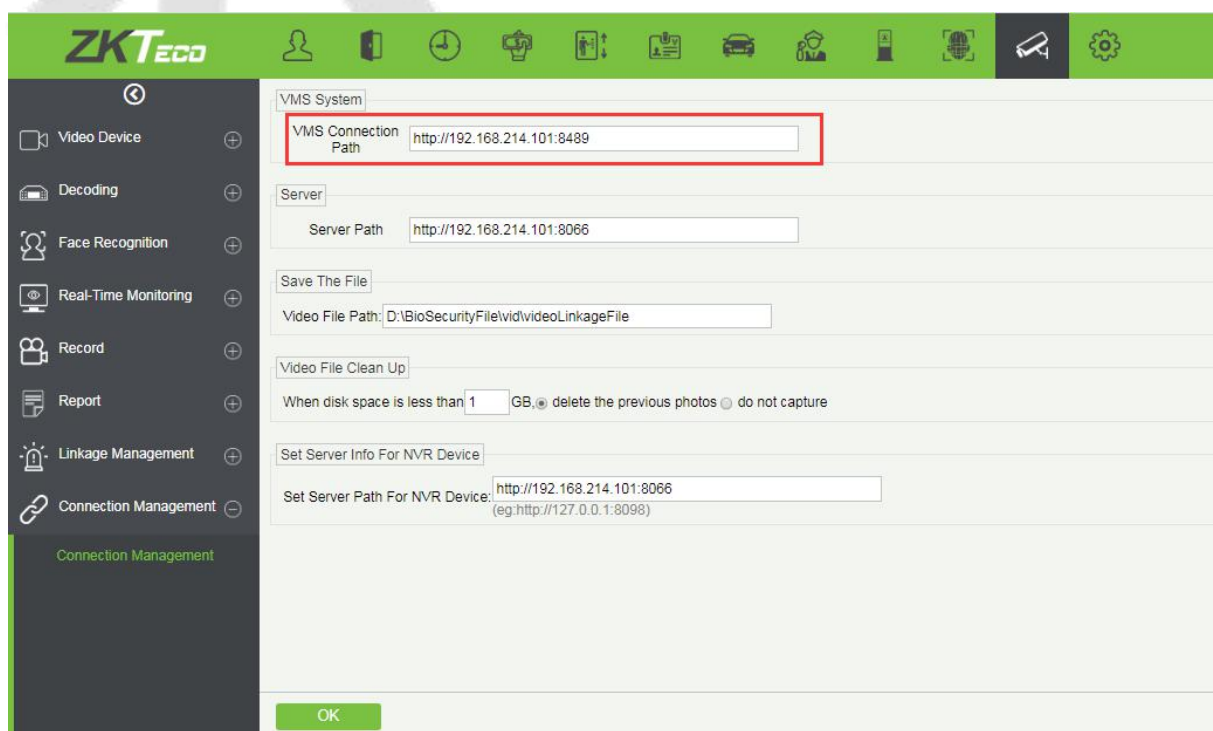
## Set the Server Information on the Site Management

- **Name:** Enter the site name or the arbitrary name.
- **IP address:** Enter the Server address. If the client and server are on the same computer, the address can be filled in as **127.0.0.1**.
- **Port:** Enter the port number as **5252**.



## 4.2 Configure the VMS Server on the VMS webpage(ZKBioSecurity)

- On the **ZKBioSecurity** interface, click the **Video** icon to configure the VMS Server information.
- On the **Video** interface, click **Connection Management** to set the VMS Server information.



**Note:**

- The server's IP address is the same as the VMS plugin installs.
- VMS Plugin and ZKBioSecurity can be installed in the same server.
- The default port number is 8489.

### 4.3 Login to the VMS Client

After setting the server information, login to the VMS Client. The login Username and Password of the VMS Client are the same as that of the VMS Server.

The screenshot shows the login window for the ZKBio VMS Plugin. The window has a dark background with green highlights. The title bar at the top right contains a close button (X). The main content area features the ZKBio VMS Plugin logo on the left and a 'Choose site' link on the right. The login form consists of three stacked input fields: a username field with a person icon and the text 'admin', a password field with an asterisk icon and masked characters, and a language dropdown menu with a globe icon and the text 'English'. Below these fields are two checkboxes: 'Remember password' and 'Auto login'. At the bottom center is a large green 'Login' button.

**Note:**

- One ZKBioSecurity server can configure several VMS Plugin.
- After all the modifications, user can experience the VMS functions, and ensure to run at least one VMS Plugin during this process.

ZKTeco Industrial Park, No. 26, 188 Industrial Road,  
Tangxia Town, Dongguan, China.  
Phone : +86 769 - 82109991  
Fax : +86 755 - 89602394  
[www.zkteco.com](http://www.zkteco.com)

