

SpeedFace-V5L[P]

Face & Palm Verification Terminal with Mask Detection



Wide Pose Angle
Acceptance



Wide Palm Pose Angle
Acceptance



Speedy
Recognition



Touchless for
Better Hygiene



Masked Face



SpeedFace-V5L[P]



Palm



Face

Compatible with
ZKBio Access

SpeedFace-V5L [P] is a fully upgraded version of the SpeedFace-V5L Visible Light Facial Recognition Terminal, using intelligent engineering facial recognition algorithms and the latest computer vision technology. It supports both facial and palm verification with large capacity and speedy recognition, as well as improves security performance in all aspects.

SpeedFace-V5L [P] adopts touchless recognition technology and masked individual identification which eliminates hygiene concerns effectively. It is also equipped with ultimate antispoofing algorithm for facial recognition against almost all types of fake photos and videos attack. Importantly, the 3-in-1 palm recognition (Palm Shape, Palm Print and Palm Vein) is performed in 0.35 sec per hand; the palm data acquired will be compared with a maximum of 3,000 palm templates.

The terminal with mask detection help reduce the spread of germs and help prevent infections straightly at each access point of any premises and public areas such as hospitals, factories, schools, commercial buildings, stations during the recent global public health issue with its masked individual identification funtion during facial and palm verification.

Features

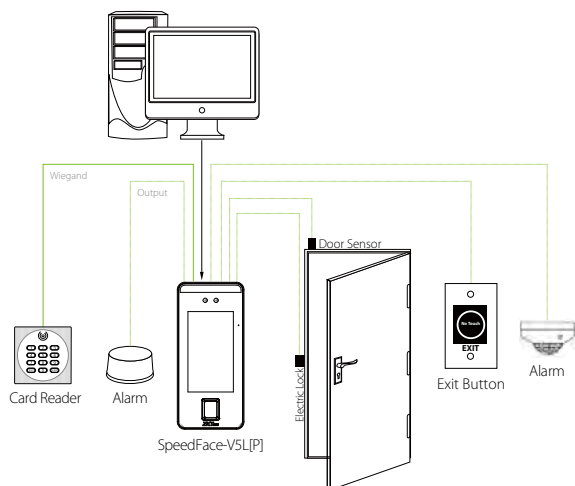
- Visible Light Facial Recognition
- Better hygiene with touchless biometric authentication and masked individual identification
- Anti-spoofing algorithm against print attack (laser, color and B/W photos), videos attack and 3D mask attack
- Available card modules:12.5 KHz EM card / 13.56MHz IC card (MF)
- Supplement light with adjustable brightness
- Multiple Verification Methods: Face / Palm / Fingerprint / Card / Password
- Mask detection;facial verification available with masks

* Facial verification for masked individuals will increase FAR. Palm verification for masked individuals is recommended.

Specifications

Display	5-inch Touch Screen
Face Capacity	6,000
Palm Capacity	3,000
Fingerprint Capacity	6,000 (Standard); 10,000 (Optional)
Card Capacity	10,000
Transactions	200,000
Operation System	Linux
Standard Functions	ID Card, ADMS, T9 Input, DST, Camera, 9-digit User ID, Access Levels, Groups, Holidays, Anti- passback, Record Query, Tamper Switch Alarm, Multiple Verify Modes.
Hardware	900MHz Dual Core CPU, Memory 512MB RAM / 8G Flash, 2MP WDR Low Light Camera, Adjustable Light Brightness LED
Communication	TCP/IP, WiFi (Optional), Wiegand input / output, RS485
Access Control Interface	3rd Party Electric Lock, Door Sensor, Exit Button, Alarm output, Auxiliary Input
Optional Function	13.56MHz IC Card (MF)
Facial Recognition Speed	≤1s
Biometrics Algorithms	ZKFace V5.8 & ZKFinger V10.0 & ZKPalm V12.0
Power Supply	12V 3A
Operating Humidity	10% - 90%
Operating Temperature	-10°C ~ 45°C (14°F ~ 113°F)
Dimensions (W*H*D)	91.93 * 202.93 * 21.5 (mm)
Supported Softwares	ZKBioSecurity, BioTime 8.5, ZKBioAccess

Configuration



Dimensions (mm)

