

# G4L

## Visible Light Facial Recognition and Multi-Biometric Time & Attendance and Access Control Terminal

Compatible with  
**ZKBioSecurity**

Compatible with  
**BioTime 8.5**



Enhanced Visible Light Facial Recognition is the latest technology of ZKTeco, aimed to overcome shortcomings of previous facial recognition and achieve an all-rounded upgrade on whatever performance and reliability. G4L is a multi-biometric identification terminal, notably offers enhanced Visible Light facial recognition and SilkID fingerprint authentication technology.

Compared with other near-infrared facial identification devices, G4L, equipped with advanced Visible Light Facial Recognition technology, enables quicker automatic face detection and facial recognition when a target enters its detection distance from 0.5m to 2.5m.

With new deep learning algorithms applied, the anti-spoofing technology performance has been dramatically heightened and can prevent different types of photos and video attacks.

Also, with the cutting-edge 3D Neuron Fingerprint Algorithm, G4L precisely authenticates dry, wet, or rough fingerprints efficiently and accurately. Apart from Visible Light facial recognition and SilkID fingerprint authentication, G4L also supports identification with RFID cards and passwords.

# Features



Revolutionary SilkID Fingerprint Sensor



Proactive Facial Recognition



Wide Pose Angle Acceptance



Visible Light Facial Recognition



New Height of Anti-Spoofing



Touchless for Better Hygiene



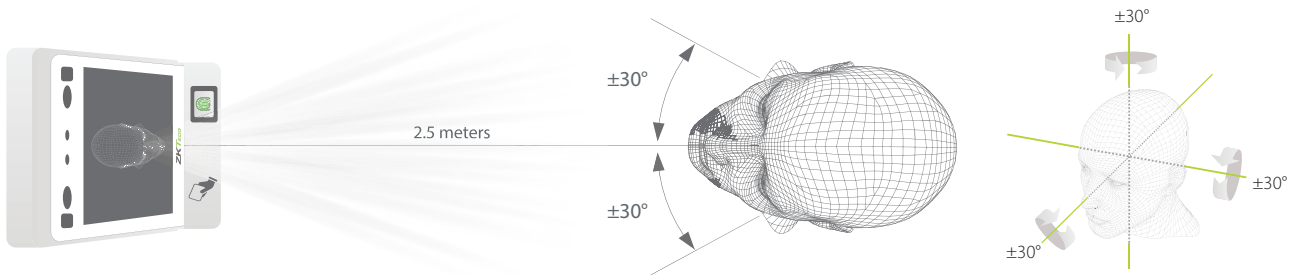
Multiple Verification Methods



Speedy Recognition

## Long Recognition Distance of 2.5m Plus Extra Wide Angle

The recognition distance has been greatly extended to 2.5 meters, which significantly improves the maximum traffic rate. While most of the algorithms only support 15-degree angle facial recognition, ZKBioFace supports 30-degree angle facial recognition.



## Specifications Ⓞ: GL Exclusive Feature

### Capacity

User	10,000
<span style="color: green;">Ⓞ</span> Face	10,000
<span style="color: green;">Ⓞ</span> Fingerprint	10,000
Card	10,000
Transaction	1,000,000

### Communication

TCP/IP  
Wi-Fi  
Wiegand Input  
Wiegand Output  
RS485

### Access Control Interface

Lock Relay Output  
Exit Button  
Alarm Output  
Door Sensor

### Hardware

Ⓞ 900MHz Dual Core CPU  
Memory 512MB RAM/ 8G Flash  
Ⓞ 2MP WDR Low Light Camera  
Ⓞ 7-inch Touch Screen, 1280\*720 pixels  
Linux Operating System  
Adjustable Monitor Brightness

### Standard Functions

ID Card / Work Code / ADMS  
DST / Bell Schedule  
Attendance Status Auto-Switch  
Record Query / Photo ID

### Optional Functions

Ⓞ 13.56 MHz IC / LEGIC Card  
Ⓞ PoE

### Special Functions

Ⓞ Visible Light Facial Recognition  
Ⓞ Alive Face Detection  
Multiple Biometric Verification Modes

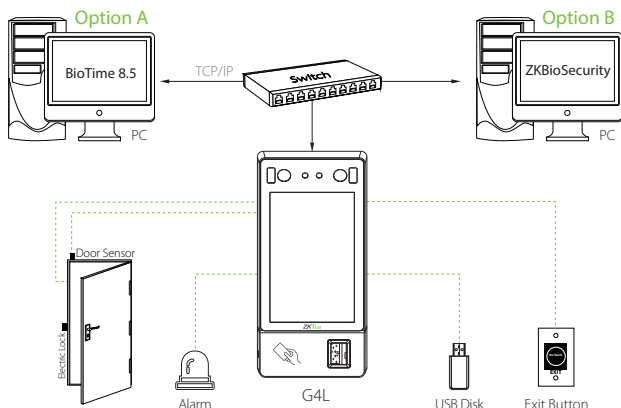
### Compatibility

BioTime 8.5  
ZKBioSecurity (Time & Attendance)

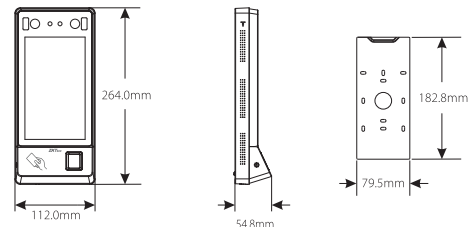
### Additional Info

Algorithms	ZKFace V5.8 ZKFinger V10.0
Working Temperature	0°C - 50°C (32°F - 122°F)
Working Humidity	<90%
Dimensions (W*H*D)	264*112*54.8 mm
Facial Recognition Speed	≤0.3 sec
<span style="color: green;">Ⓞ</span> Facial Recognition Distance	0.5m ~ 2.5m
Power	DC12V 3A

## Configuration



## Dimensions (mm)



ZKTECO CO., LTD.

www.zkteco.com

E-mail: sales@zkteco.com



Copyright©2020 ZKTECO CO., LTD. All rights reserved.

V3.0 2020.06.08