

INSTALLATION GUIDE

BioTime 8.5

Version: **1.0**
Date: **Sep 2019**

System Requirements

Software Specifications

| | |
|--------------------|---|
| Device Capacity | 500 in a single server |
| Database | PostgreSQL (Default) MS SQL Server 2005/2008/2012/2014 (Recommended) MySQL Oracle (Oracle 11g/12c) |
| Supported OS | Windows 8/8.1/10 Windows Server 2003/2008/2012 |
| Monitor Resolution | 1024 x 768 or above |

Software Specifications

| Device | 100 | 200 | 500 |
|-----------------|--|------------------------|------------------------|
| CPU | Intel i3 Quad Core | Intel i5 / Magny-Cours | Intel i7 / Magny-Cours |
| RAM | 4G | 8G | 16G |
| Hard Disk Space | Available space of 100G or above. We recommend using NTFS hard disk partition as the software installation directory. (An NTFS hard disk partition provides better performances and higher security.) | | |

Suggested Browsers

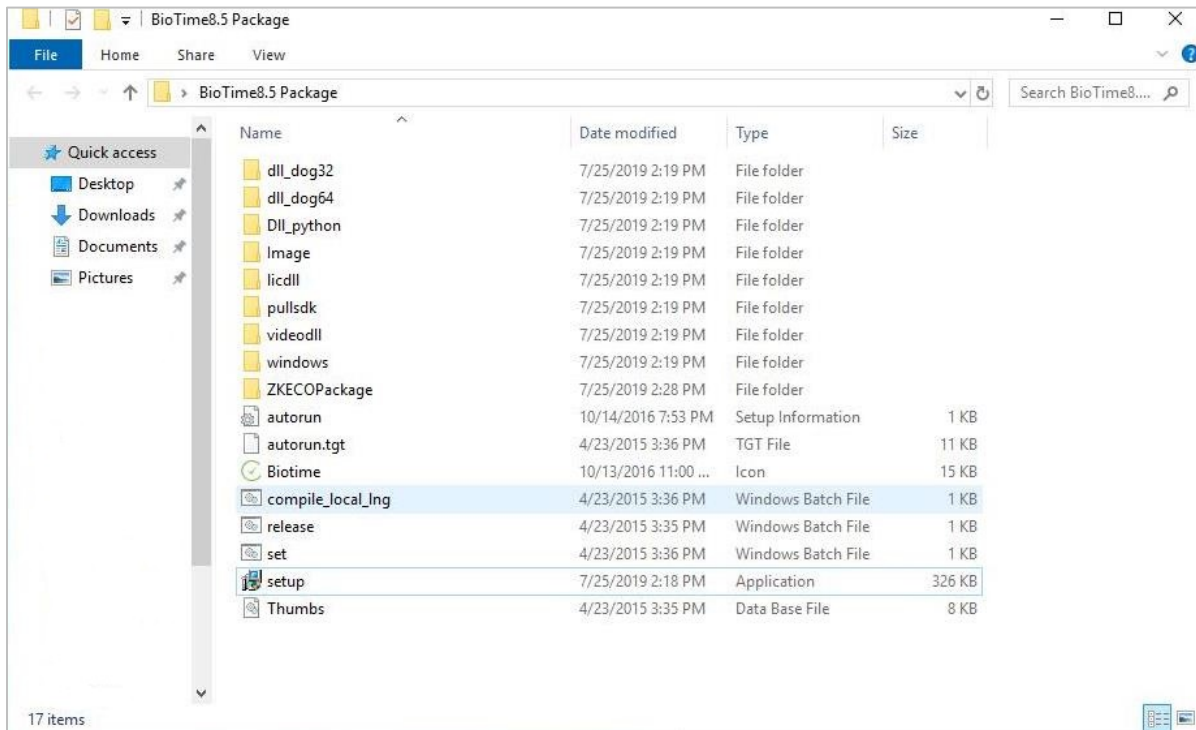
- Chrome 33+
- IE 11+
- Firefox 27+

Download BioTime 8.5 Software

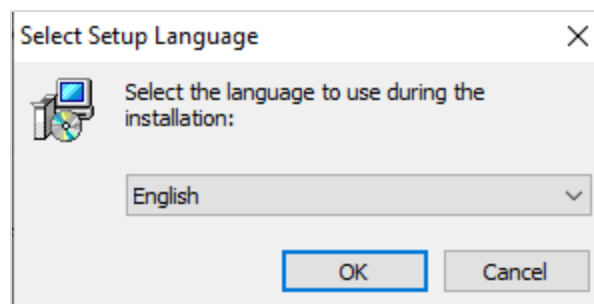
1. Click or copy the following link: <http://zkteco.me/ZKTecoME/BioTimeInstallationPackage.rar> into your browser or download installation package from the website www.zkteco.me.
2. BioTime 8.5 Installation Package will be automatically downloaded and will be saved to your default Downloads folder.

Install BioTime 8.5 Software

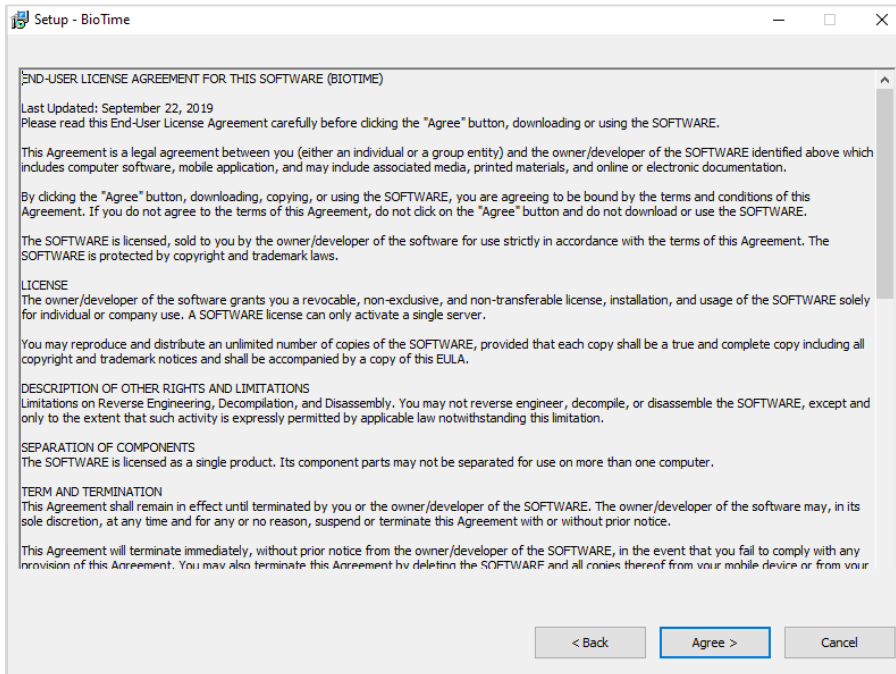
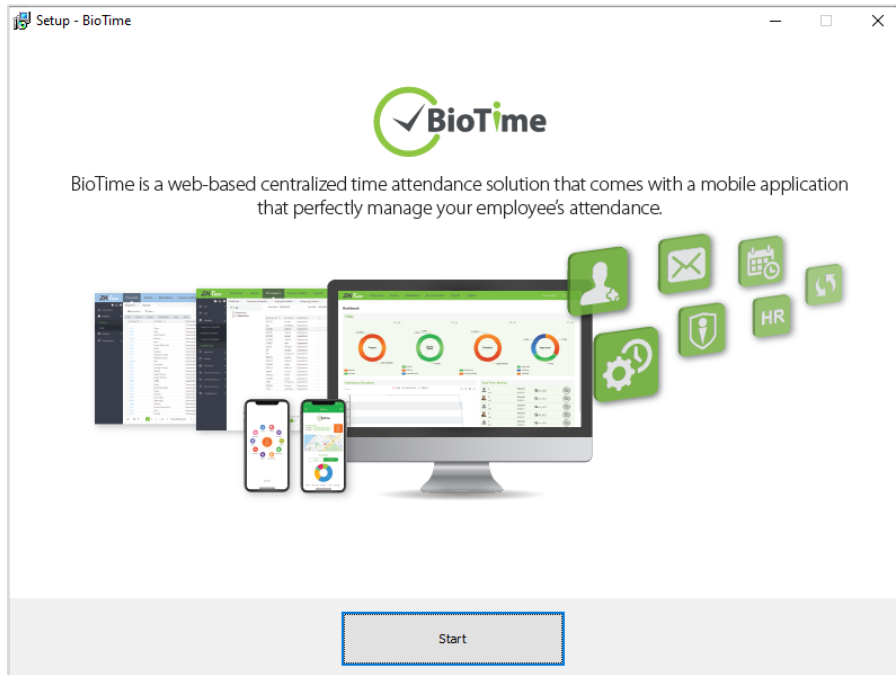
1. Go to your default Downloads folder and open installation package.
2. Right click *setup.exe* and run the installation setup as Administrator.



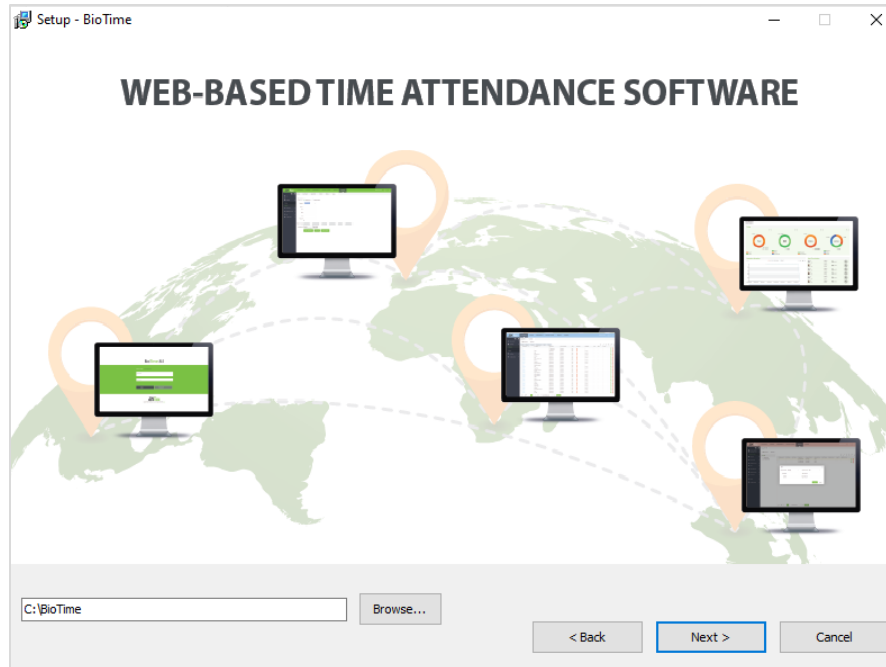
3. Select the language of the software.
Note: You can change this on the software after the installation.



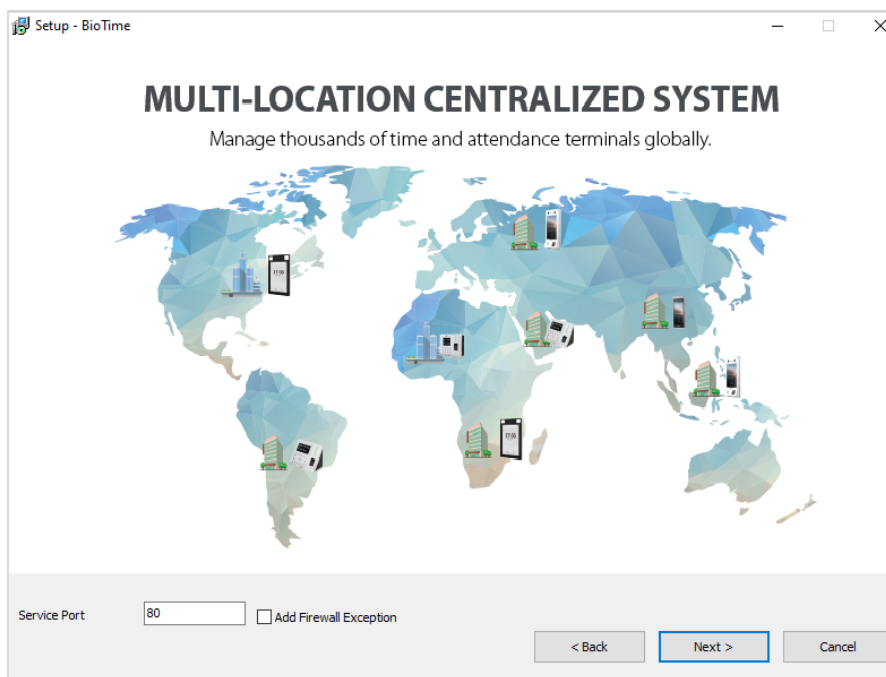
4. Click *Start* button to continue the installation. Read carefully the License Agreement and click *Agree* if you accept the license terms and conditions or *Back* if not.



5. Choose the installation file folder and click *Next*.



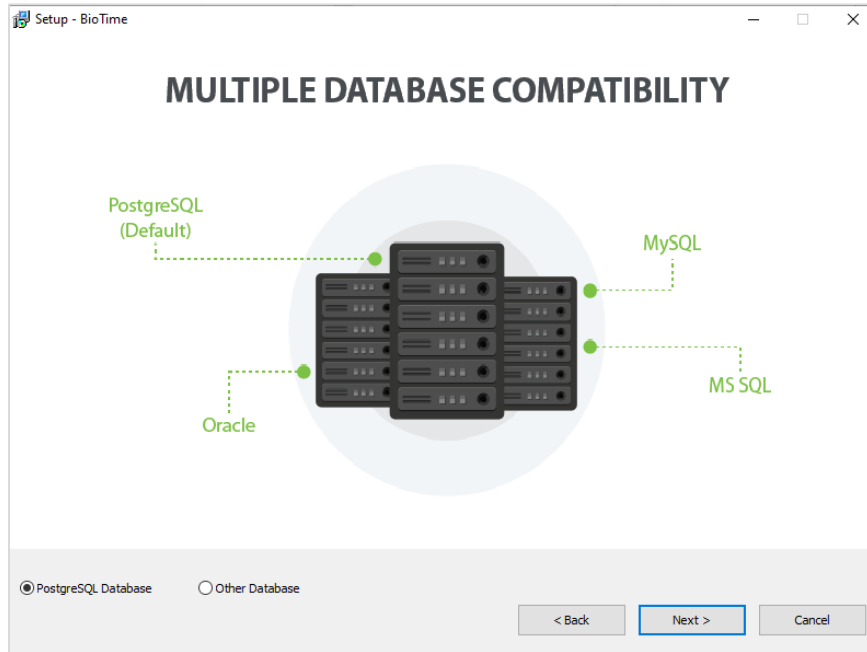
6. Set the Port Number and tick *"Add Firewall Exception"*.



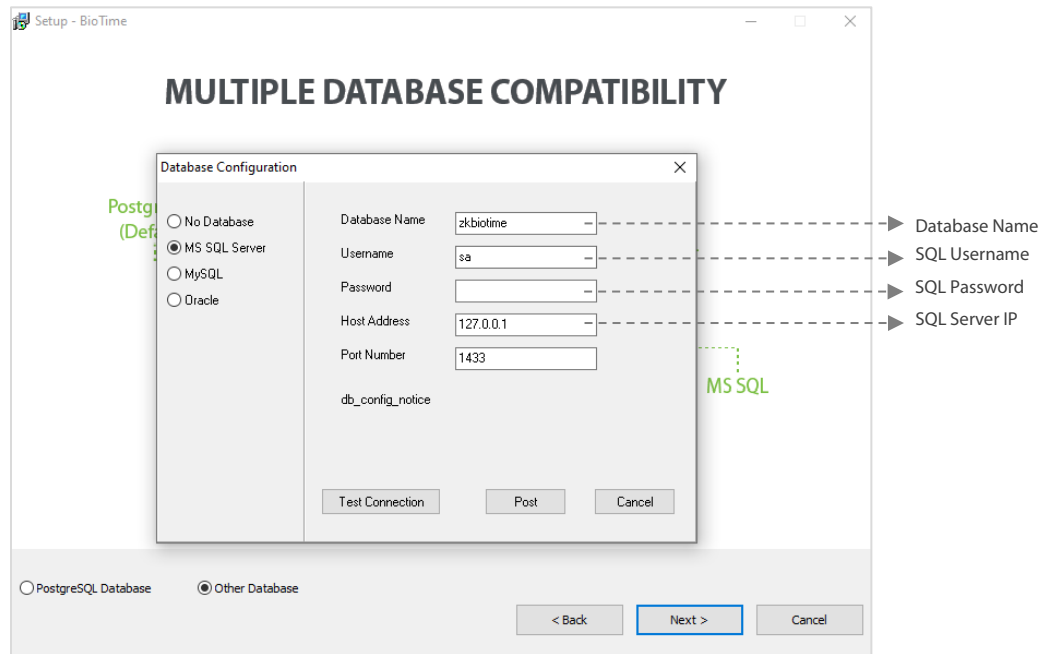
7. Select the database.

Choose *Default Database* to install the software in the default database (PostgreSQL).

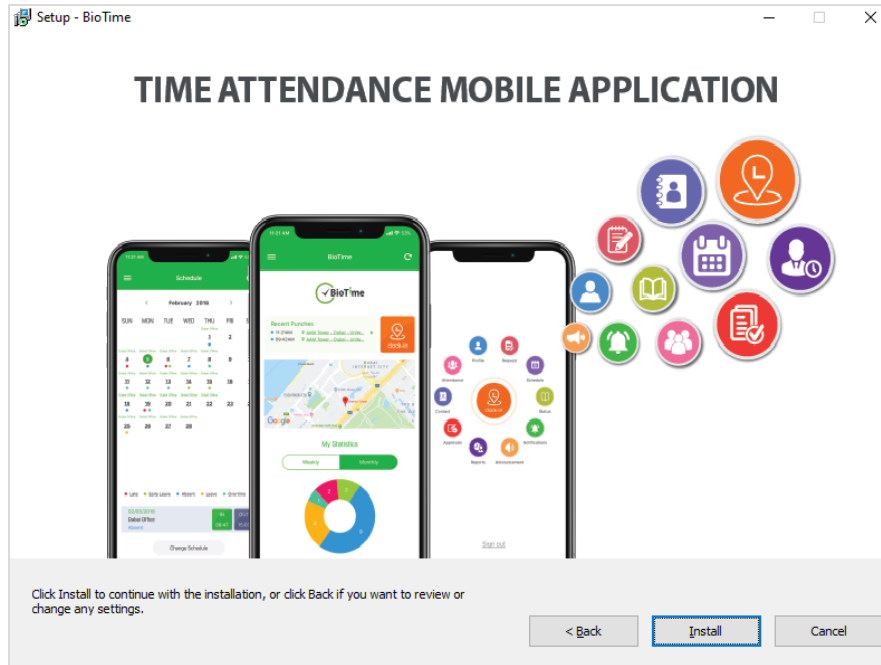
Note: You can also configure the database after installation.



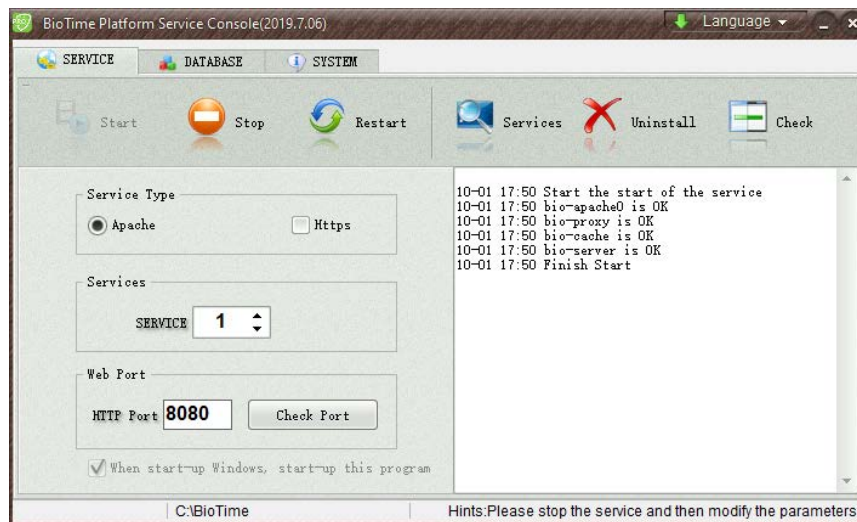
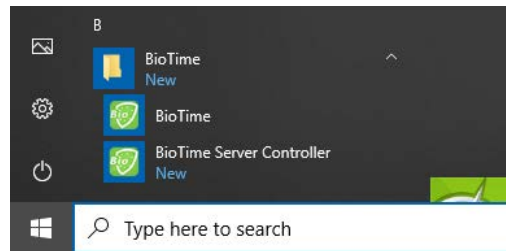
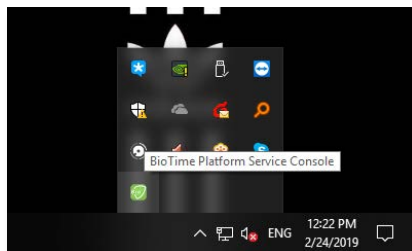
Choose *Other Database* to configure the database during installation process.



8. Click *Install*.



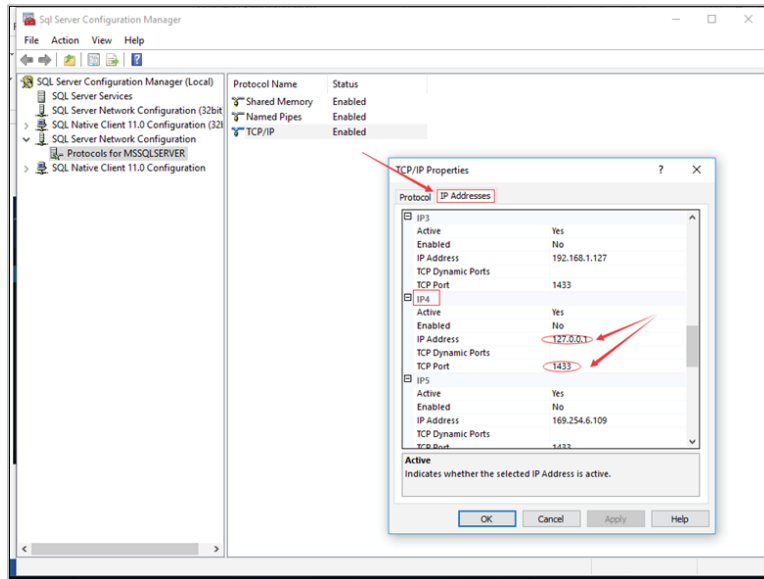
After the installation, run the **BioTime Server Controller** which you can find in your taskbar or in the Start menu. Then click **Start** under **Service** tab.



SQL Server Configuration with BioTime 8.5

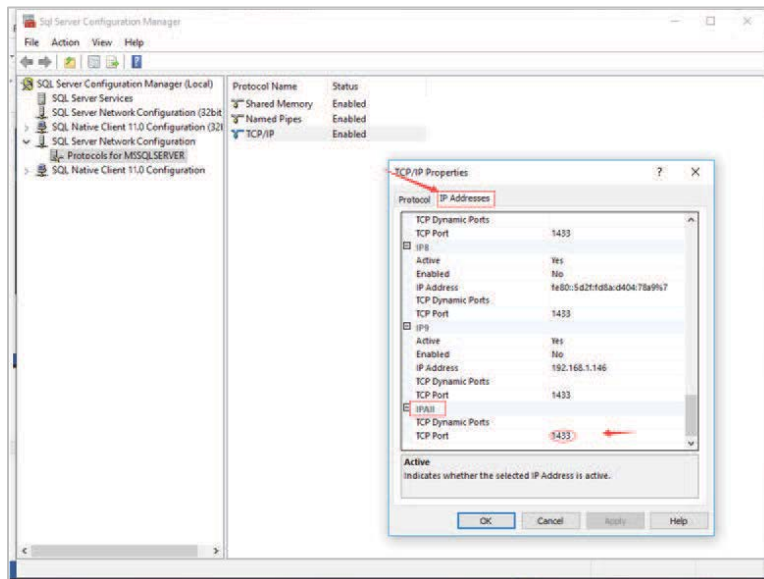
When you install MS SQL Server, choose Mixed Mode Authentication.

Start > SQL Server Configuration Manager > Protocols for MS SQL Server
 Right click on TCP/IP > Enable TCP/IP



IP Addresses > IPAll

In "IPAll" configuration, empty the values in the 'TCP Dynamic Ports' and type 1433 in the TCP Port.



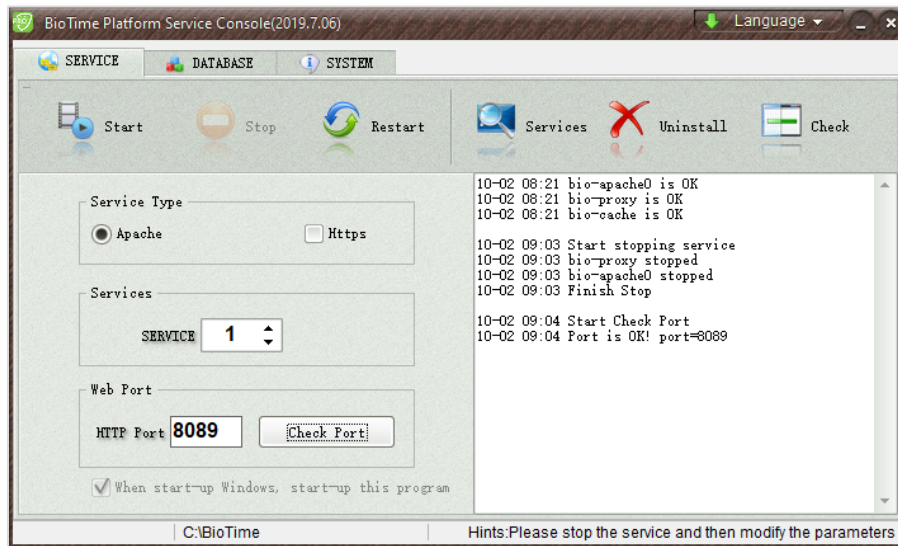
Click OK the restart the SQL services.

BioTime 8.5 Configuration


Open the BioTime Platform Service Console.

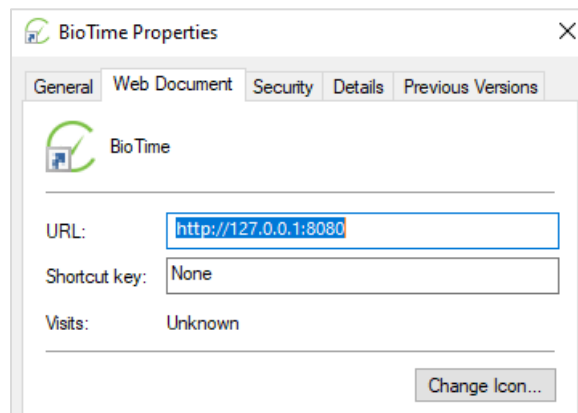
Server Port Configuration

1. Under the *Service* tab, click *Stop* to stop the services then fill in the port number. Click *Check Port* to see if the port number is available. Then click *Start* to start the services again.



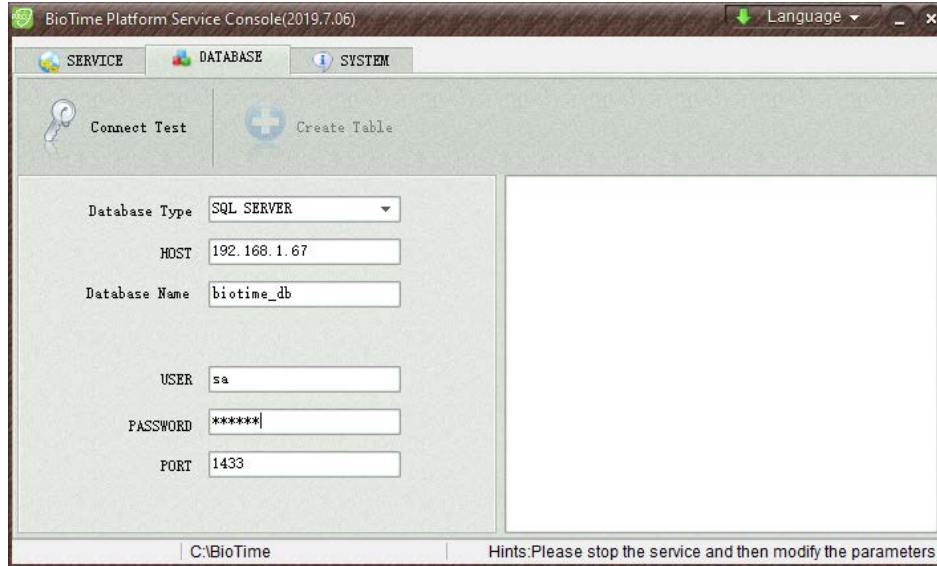
Note:

- I. "Port Unavailable" means that this port is occupied. Please set another port and re-test.
- II. When the port number is modified, right click on the BioTime icon  on the desktop and enter Properties to change its URL (shown in the image).

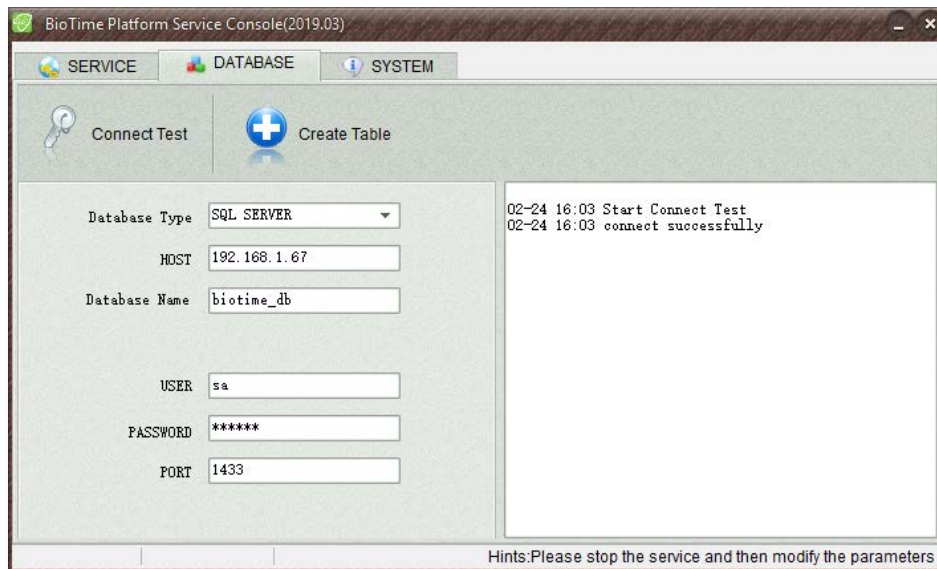


Database Configuration

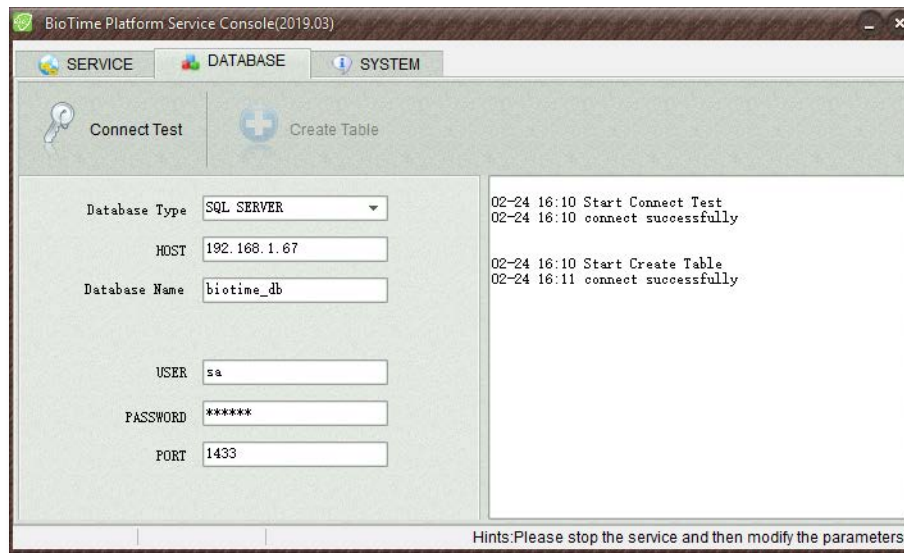
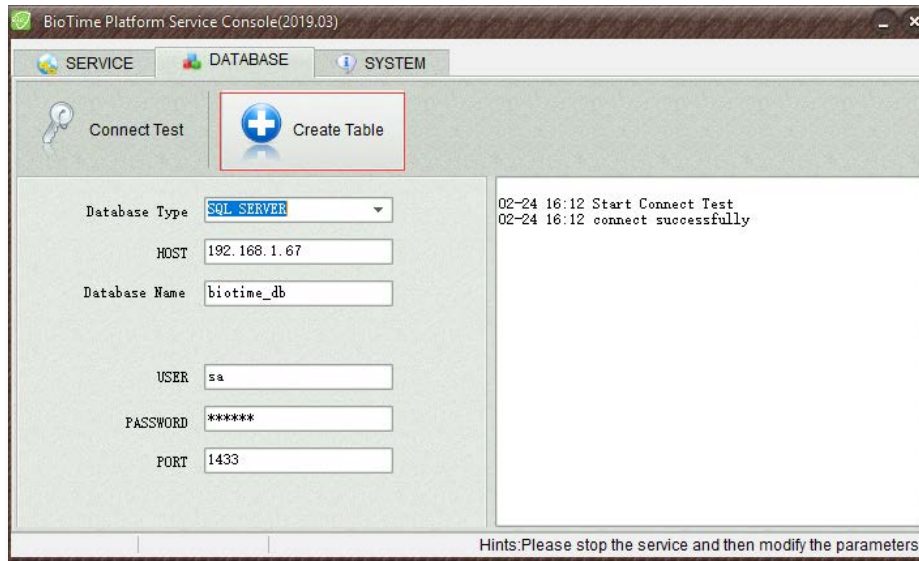
1. Under *Database* tab, you will see the following image if you have already configured the database during installation.



2. If you have not configured the database during installation, you need to select the desired database and enter the correct parameters then click *Connect Test*. It will display "Connect Successfully" if the connection was made successfully.



3. Click *Create Table* and once done it will display “Connect Successfully.”



4. After connecting successfully, click Start under Service tab.

For any clarifications regarding the Installation Guide, please contact us through e-mail at softwaresupport@zkteco.com.

ZKTeco Middle East

Office 1207, Floor 112, Arenco Tower, Media City, Sheikh Zayed Road, Dubai, U.A.E.

Tel: +971 4 3927649

Fax: +971 4 3792752

E-mail: zk_me@zkteco.com

www.zkteco.me

