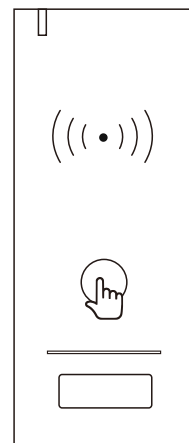


Wireless Reader



User Manual

1. Introduction

The Wireless Reader Kit includes a Wireless Reader and a Receiver. 433MHz Rolling Code of encryption algorithm guarantees higher-secure, programmable Wiegand output of the Receiver makes it can work with most Wiegand controller in the world. Super strong 3M stickers provide a simple way for installing the Wireless Reader.

Because of ultra low power consumption, the battery of Wireless Reader can work as long as 6 months. (bases on 30 times /day)

Features

- 433MHz Rolling Code technology
- Card type: 13.56MHz Mifare card
- Programmable Wiegand output of the Receiver: 26 bits or 34 bits
- Communication distance: 30m maximum
- Ultra low power consumption
- Waterproof, conforms to IP65

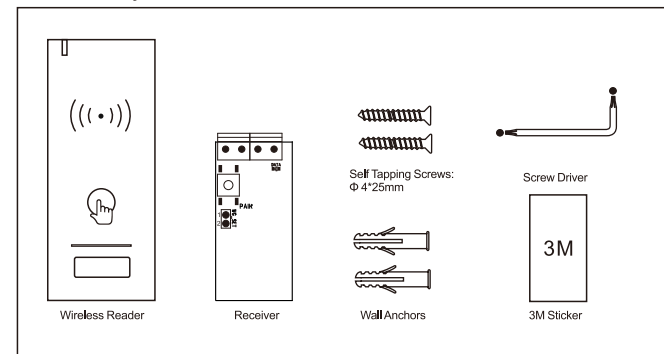
Specifications

| | | |
|------------------------|-------------------------|---------------------------|
| Wireless Reader | Card Type | 13.56MHz Mifare card |
| | Operating Voltage | 3 units of AAA batteries |
| | Idle Current | ≤5uA |
| | Working Current | ≤35mA |
| | Reading Distance | ≤3cm |
| | Communication Frequency | 433MHz |
| | Communication Distance | 30m Maximum |
| | Operating Temperature | -20°C~+60°C (-4°F~+140°F) |
| | Operating Humidity | 0%~86% |
| | Index of Protection | IP65 |
| | Color | Black, White optional |
| | Dimensions | L120 * W50 * H20 (mm) |
| | Net Weight | 88g |

- 01 -

| | | |
|-----------------|-------------------------|---|
| Receiver | Operating Voltage | 12V DC |
| | Working Current | ≤15mA |
| | Communication Frequency | 433MHz |
| | Wiegand Output Format | 26 bits Or 34 bits (Default is 26 bits) |
| | Operating Temperature | -20°C~+60°C (-4°F~+140°F) |
| | Operating Humidity | 0%~86% |
| | Dimensions | L25 * W50 (mm) |
| Net Weight | 10g | |

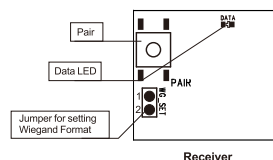
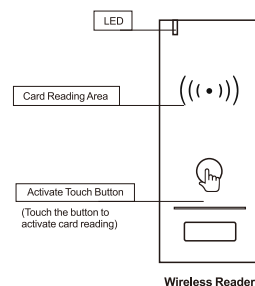
Carton Inventory



- 02 -

2. Application

Function Indicator

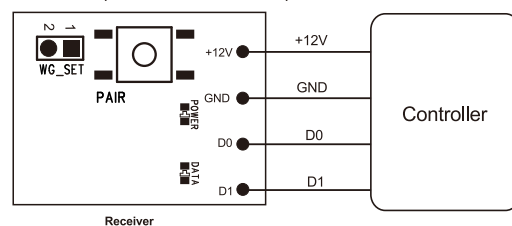


Receiver Port Definitions

| Port | Function |
|------|-----------------------|
| +12V | 12V DC Power Input |
| GND | Ground |
| D0 | Wiegand Data 0 Output |
| D1 | Wiegand Data 1 Output |

- 03 -

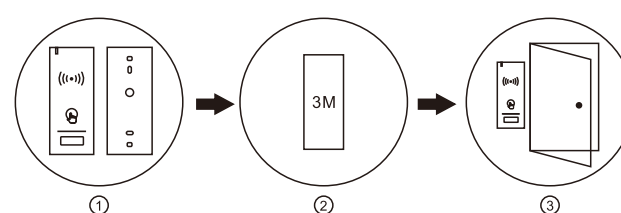
Connection (Receiver with Controller)



(The Receiver can be customized to match your controller structure)

Wireless Reader Installation

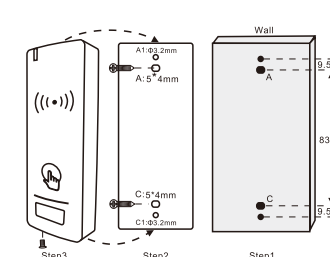
Method 1: Stick by 3M sticker (For metal door/glass door/smooth surface wall)



- ① Take out the back plate of Reader;
- ② Stick the back plate on the metal door/glass door/smooth surface wall;
- ③ Load the battery into Reader and screw it with the back plate to finish installation. (We use high-quality 3M sticker, the stickiness will be the best after sticking in 24 hours).

- 04 -

Method 2: Install by screws (For wall /wooden door)



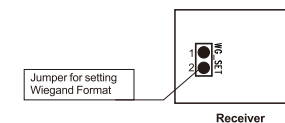
3. User Operation

1) Read Card

Touch the activate touch button, then read the card. (When the Wireless Reader isn't in use in 5s, it switches to a "sleep mode" to conserve power, please touch the activate touch button to wake it up when use.)

2) Set Wiegand Output Format

(Factory default is 26 bits)



- 2-1) Set Wiegand 26 bits output: Insert Pin caps to points 1, 2 (WG_SET)
- 2-2) Set Wiegand 34 bits output: Remove Pin caps from points 1, 2 (WG_SET)

- 05 -

3) Pair the Wireless Reader with Receiver

(They are already paired when out of factory, if no problem, the users do not need to do this operation in using.)

Note: 3-1) The Receiver can pair 16pcs of Wireless Readers maximum.

3-2) When pairing, all parts must be paired at the same time, then exit pairing mode. If need adding one more part, you still need to pair all parts again.

Step 1: Enter Pairing Mode

Press the 'Pair' button on the Receiver for 5 seconds, the green LED will be light on, means in the pairing mode;

Step 2: Pairing Wireless Reader

Touch the activate button on the Wireless Reader, reading a card, the green LED on Receiver will be light on for 0.5 second, means pairing successfully;

(Repeat step 2 if you want to pair more Wireless Readers)

Step 3: Exit Pairing Mode

Press the 'Pair' button on the Receiver for 0.5 second to exit pairing mode.

4) Delete Wireless Reader

Note: This step will delete all paired Wireless Readers at once, please be careful. Press the 'Pair' button on the Receiver for 5 seconds, release it when the green LED light on, press the 'Pair' button again for 0.5 second, then all Wireless Readers will be deleted.

5) Low Battery Warning

If the Wireless Reader makes 3 beeps and red LED shines 3 times when reading cards, means the battery is low, please change the battery in time.

4. Sound and Light Indication

| | Operation Status | Red LED | Green LED | Buzzer |
|------------------------|---|----------------|-------------------|----------|
| Wireless Reader | Touch to activate | ON | -- | -- |
| | Read valid card | -- | ON for 0.5 second | One beep |
| Receiver | Read card when low battery | Shines 3 times | -- | 3 beeps |
| | Stand-by | ON | -- | -- |
| | When read valid card on Wireless Reader | ON | ON for 0.5 second | -- |
| | Pairing mode | -- | ON | -- |

- 06 -