



VF600

More Capacity and Wireless Connection

VF600 is a face identification T&A terminal with face, PIN and RFID recognition modes. With the latest face identification algorithm and streamlined technology, it can hold 800 face templates without dividing into groups and complete verification in less than 1 second. Communicating via Wi-Fi(Optional), TCP/IP, and USB (host and client), it can ensure a smooth connection and data transfer.

All the settings can be easily done on 3-inch touch screen. It has been elaborately designed and finely processed to match your slap-up office perfectly.

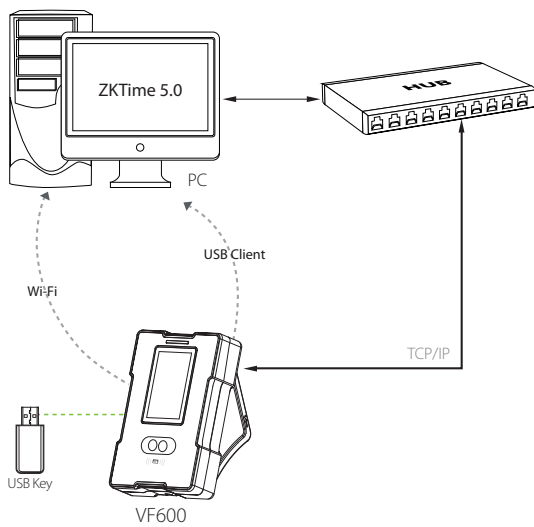
Feature

- Elegant ergonomic design.
- Wi-Fi(Optional), TCP/IP, and USB (host and client) communication.
- 3-inch touch screen, T9 Input, and 9 Digit User ID.
- Infra-red optical system enables user-identification in
- Poorly lit environment.
- Optional Mifare card module.
- Professional face identification algorithm.

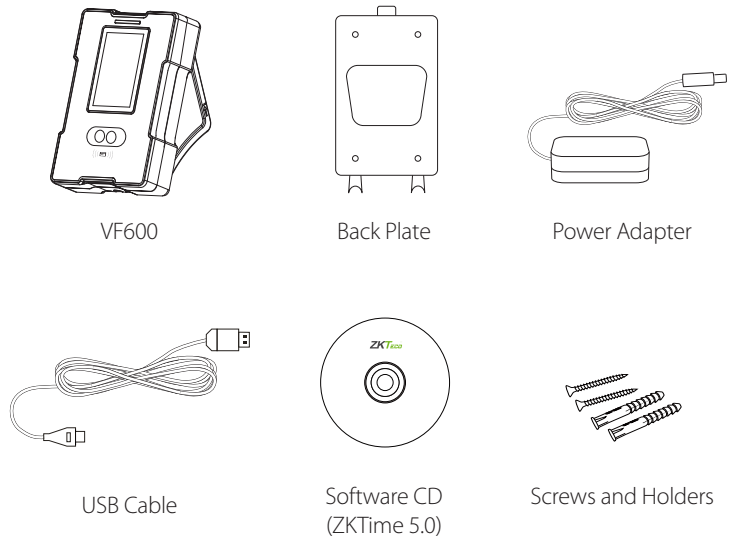
Specifications

Display	3-inch Touch Screen
Face Capacity	800(Standard)/1200(Optional)(1:N)
ID Card Capacity	10,000
Logs Capacity	100,000
Communication	TCP/IP , USB (host and client)
Standard Functions	ID Card, Automatic Status Switch, Self-Service Query, Work Code, T9 Input, 9 Digit User ID, DST, Wi-Fi, Scheduled-bell and Short Message, Photo -ID
Optional Function	Mifare Card, AMDS
Power Supply	12V/1.5A
Verification Speed	≤1S
Operating Temperature	0-45 °C
Operating Humidity	20%-80%
Dimensions	104.7 × 160 × 36 mm (L × H × D)

Configuration



What's in the Box



ZKTeco Inc.
E-mail: sales@zkteco.com
www.zkteco.com

© Copyright 2014. ZKTeco Inc. ZKTeco Logo is a registered trademark of ZKTeco or a related company. All other product and company names mentioned are used for identification purposes only and may be the trademarks of their respective owners. All specifications are subject to change without notice. All rights reserved.

