



S680

RFID Time & Attendance Terminal

S680 is an RFID Time & Attendance and Access Control Terminal with 3.5" TFT LCD. With the adoption of the brand new firmware and the latest core board platform, S680 perfected its user-friendly

interface and identification speed, it can also control the door and connect with 3rd party electric lock, door sensor, and exit button, etc.

Features

Remarkable User Experience

- Intuitive and stunning UI designed with the most popular and internationalized element.
- Interface operation adopts modularized hierarchical design.
- Simpler, better and more logical.
- Great user interactivity.

Enhanced Features and Performance

- Multi-languages.
- Data backup and retrieve.
- Chip encryption for firmware protection.

Excellent Expandability

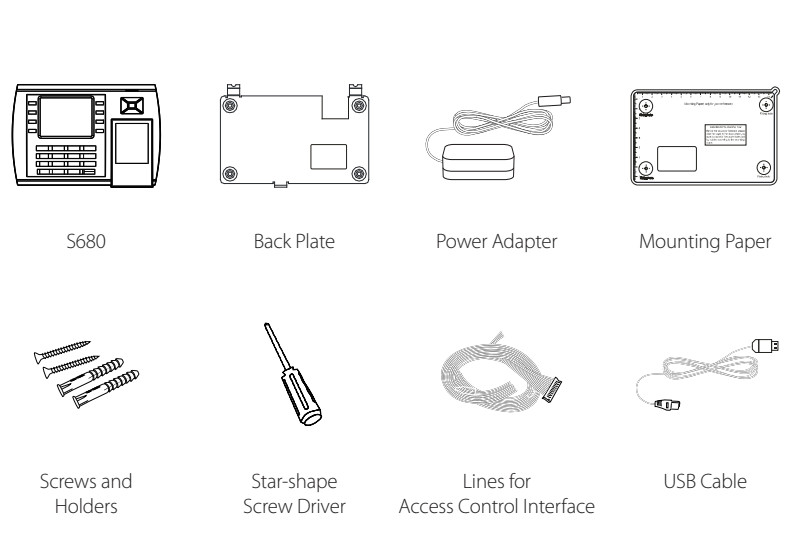
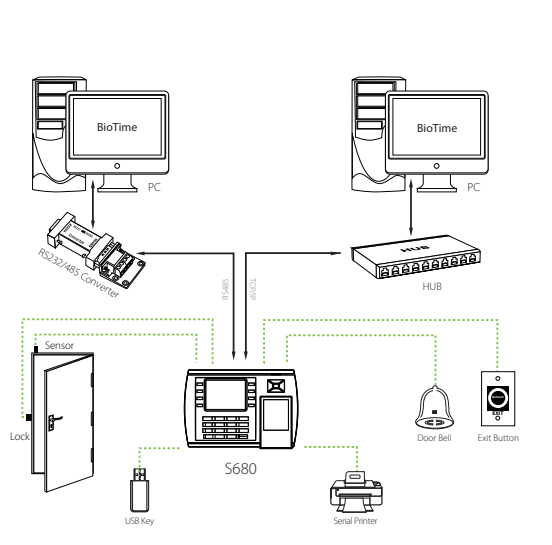
- Easy to extend functions and customize customers' requirements.

Specifications

ID Card Capacity	10,000
Record Capacity	50,000
Display	3.5-inch TFT Screen
Communication	TCP/IP, RS232/485, USB (host and client)
Standard Functions	Workcode, SMS, DST, Self-Service Query, AutomaticStatus Switch, Scheduled-bell, Photo ID, Anti-passback, ID Card, ADMS
Access Control Interface	3rd Party Electric Lock, Door Sensor, Exit Button, Alarm
Optional Functions	Mifare/HID, Wi-Fi, 3G, Webserver, Multiple Verify Mode, External Printer
Wiegand Sigal	Input & Output
Software	BioTime
Power Supply	DC 12V 1.5A
Verification Speed	≤1 Sec.
Operating Temp.	0°C- 45°C
Operating Humidity	20% - 80%
Dimension	204.99×145.00×47.45mm (Length×Width×Thickness)

Configuration

What's in the Box



ZKTeco Middle East
www.zkteco.me
 E-mail: zk_me@zkteco.com

© Copyright ZKTeco Inc. ZKTeco Logo is a registered trademark of ZKTeco or a related company. All other product and company names mentioned are used for identification purposes only and may be the trademarks of their respective owners. All specifications are subject to change without notice. All rights reserved.

