



ZKBioSecurity is the ultimate “All in One” web based security platform developed by ZKTeco. It contains multiple integrated modules: visitor management, parking, guard patrol and video linkage. With an optimized system architecture designed for high level biometric identification and a modern-user friendly UI, ZKBioSecurity provides the most advanced solution with a whole new user experience.

Features:



LPR Camera for Parking
(New Function)



All-In-One Biometric
Security Solution



Extra Large Doors
Management Capacity



Web-Based Time
Attendance (New Function)



Email Notifications



Data Auto-Backup Function



Support ONVIF
Surveillance Device



Global Anti-Passback
and Linkage



Web-Based Platform



Flexible Card Format



Online Guard
Patrol Feature



Simple User-Friendly UI



Flexible Verification Mode



Activate or Deactivate
the Door



Time Zone Settings for Exit
Button and Auxiliary Input



Hotel Module



Offline Elevator Control



Mobile APP

Function

- All-In-One solution. Simple Structure and Smooth Workflow. (Up to 2,000 doors in Single Server and 8,000 Multi-Server).
- Stable, Fast and Consistent Communication.
- Web-based T&A Function.
- Advanced Access Authentication.
- Global Anti-Passback, Linkage and interlock.
- Video Integration Compatible with Third Party Device.
- Automatic Data Backup.
- Alarms and Events Email Notifications.
- System Log Monitoring.
- Supports InBio Pro Access Control Panels and Green Label Product Series.
- Card Printing function.
- Supports badge printer, QR code & barcode scanner.
- Supports DNS/DDNS connection.
- Supports Online/Offline Elevator Control.
- Integrated with Arteco Video Software and C2P Video Middleware and connect with Milestone.
- Mobile App version is available.

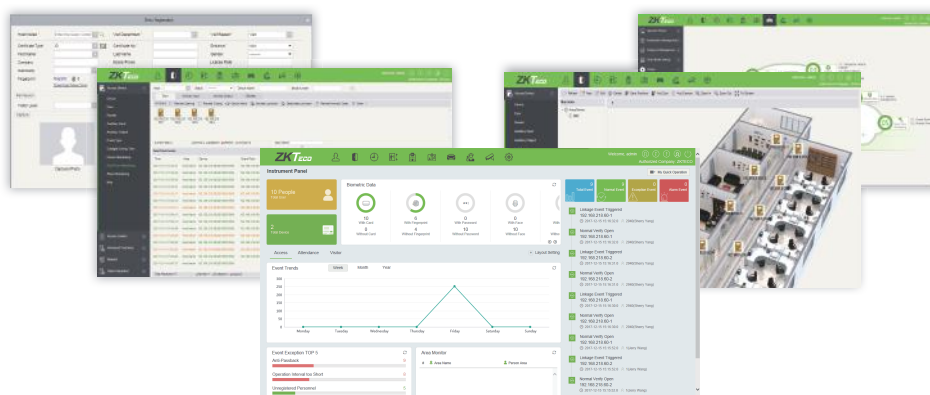
Software Specifications:

Latest Version	3.1.0.0_R
Pervious Version	3.0.5.0_R
System Architecture	Server/Browser
Door Capacity	2,000 Single Server/ 8,000 Multi-Server
User Capacity	30,000+*
Database	PostgreSQL (Default), MS SQL Server & Oracle (Optional)
Supported OS	Windows 7/8/8.1/10/Server 2008/2012 (32/64)
Suggested Browsers	IE 11+/Firefox 27+/Chrome 33+

* Minimum PC Requirements:

CPU	Dual core processor with speeds of 2.4GHz or more
Memory	4GB or Above
Storage	30GB Free Space or More. (NTFS Recommended)
Monitor Resolution	1024 x 768 or Above

* Please refer to the server configuration suggestion file according to your requirements.

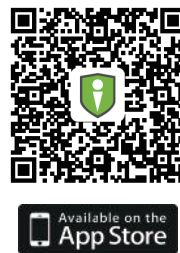




What's new in v3.1.0.0_R?

- New web-based Time Attendance module works simultaneously with Access Control and Parking module.
- New Parking module can effectively manage the entry and exit of vehicles using LPR Camera, UHF or BT readers.
- New designed dashboard supports custom settings for different modules and checking event statistics either weekly, monthly or yearly.
- New advanced Access Control features such as Global Anti-Passback support setting by person, exporting report of "who is inside" and person availability feature and so on.
- Supports flexible Import/Export with custom attributes and Import/Export of Personnel/Department data.
- Module menus can also be shown as icons. They can be customized in the setting.
- Supports automatic report functions in Time Attendance module.
- Supports OCR and ID Reader in Hotel management module.
- Updated OCR Features now supports more Countries.

ZKBioSecurity Mobile APP Download



ZKTeco Middle East
www.zkteco.me
 E-mail: zk_me@zkteco.com

© Copyright 2016, ZKTECO CO.,LTD. ZKTeco Logo is a registered trademark of ZKTeco or a related company. All other product and company names mentioned are used for identification purposes only and may be the trademarks of their respective owners. All specifications are subject to change without notice. All rights reserved.

V1.3 2018.1.8