



BioTime 6.0

Installation Guide

V 4.0 - May 2017

System Requirements

Operating Systems

Windows	Microsoft Windows Server Standard Edition Microsoft Windows Server 2008 Microsoft Windows Server 2012 Microsoft Windows 7 Microsoft Windows 8/8.1 Microsoft Windows 10
Memory	2 GB (min) and above
CPU	Basic frequency more than 2 GHz
Hard Disk Space	10 GB available (min) and above We recommend to use an NTFS hard disk partition as the Software Installation Directory. (An NTFS hard disk partition provides better performances and higher security)
Architecture	64-bit

Database

MS SQL Server	Microsoft SQL Server 2008 Microsoft SQL Server 2008 R2 (Recommended) Microsoft SQL Server 2012 Express Edition Microsoft SQL Server 2016 Express Edition
Oracle Database	10g / 11g
MySQL	MySQL 5.0.45 (Recommended)

Web Browser

Internet Explorer	Internet Explorer 9.0+
Google Chrome	Google Chrome 33+
Mozilla Firefox	Mozilla Firefox 27+

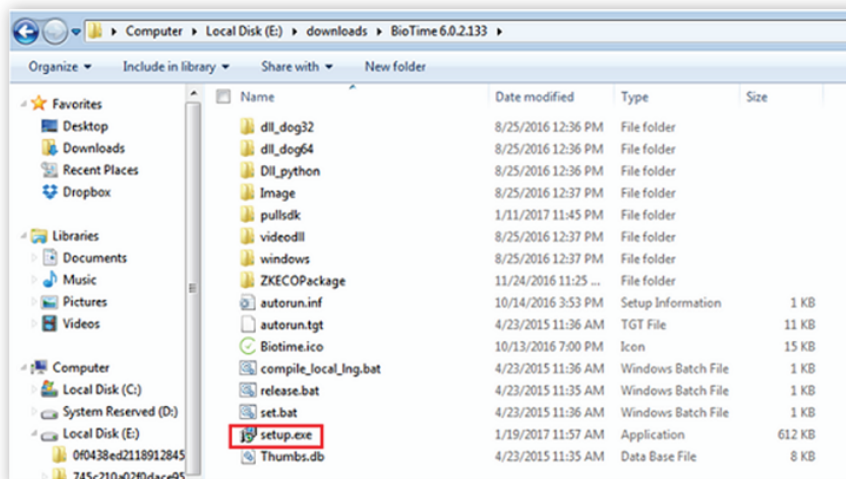
Download BioTime 6.0 Software

1. Click or copy the following link into your browser,
<http://zkteco.me/ZKTecoME/BioTimeInstallationPackage.rar>
2. BioTime 6.0 Installation Package will be automatically downloaded and will be saved to your default Downloads folder.

Installing BioTime 6.0 Software

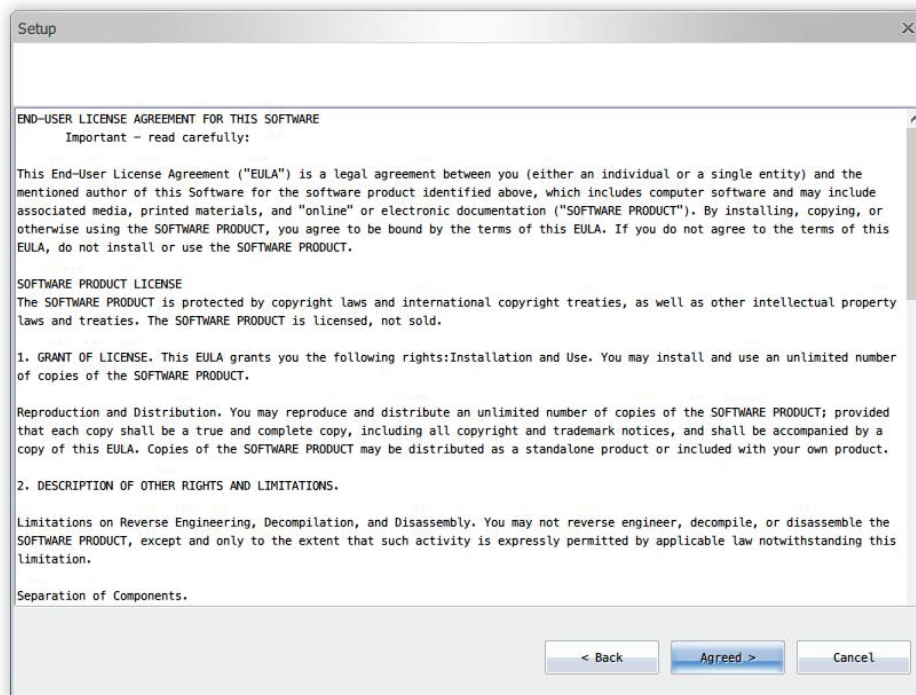
Step 1: Go to "Downloads" folder and open installation package.

Step 2: Double click "setup.exe" and Run the installation setup.

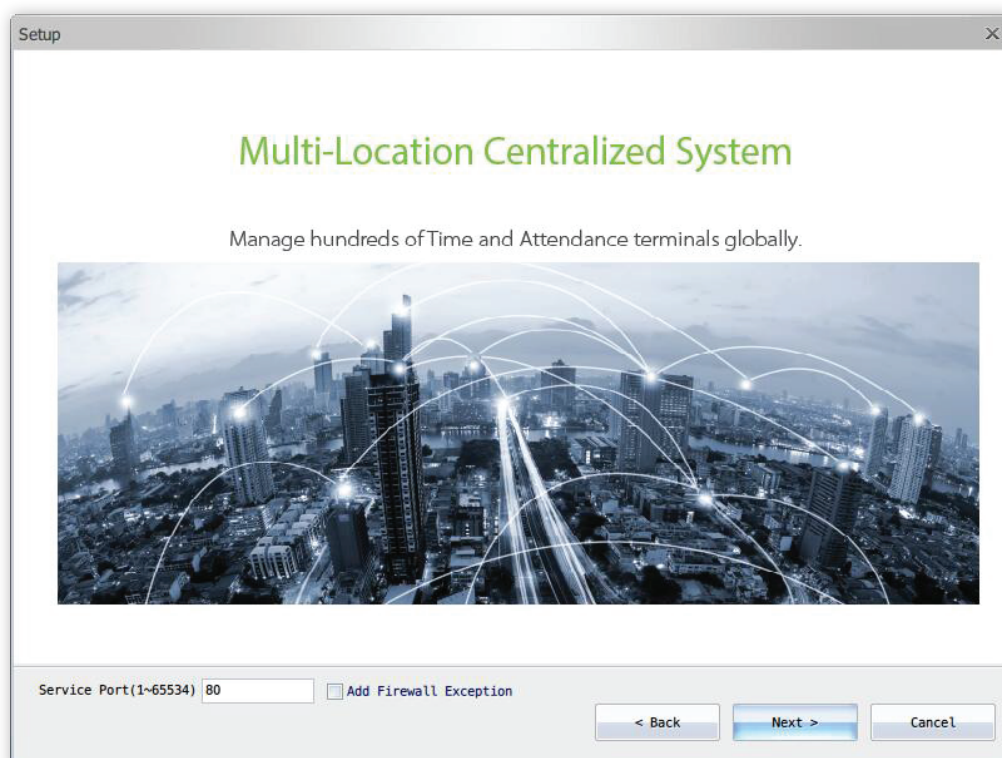


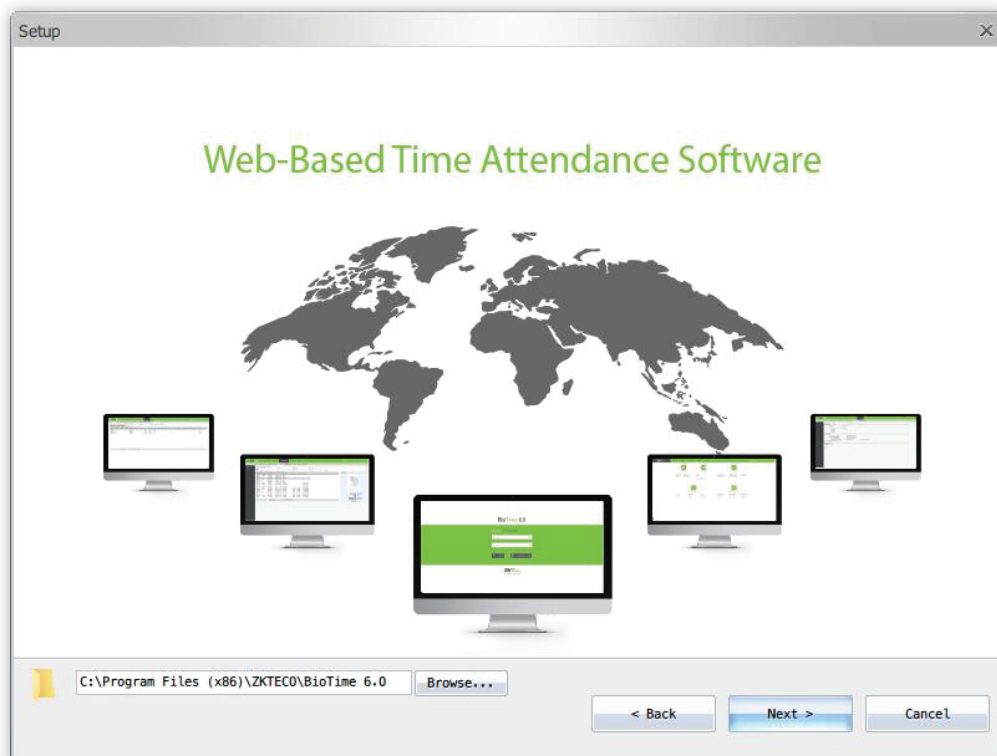
Step 3: Click **Start** button to continue the installation.





Step 4: Set the Port Number and tick the "Add Firewall Exception".





Step 5: Select the language.



Step 6: Database Selection - choose **Default Database**.

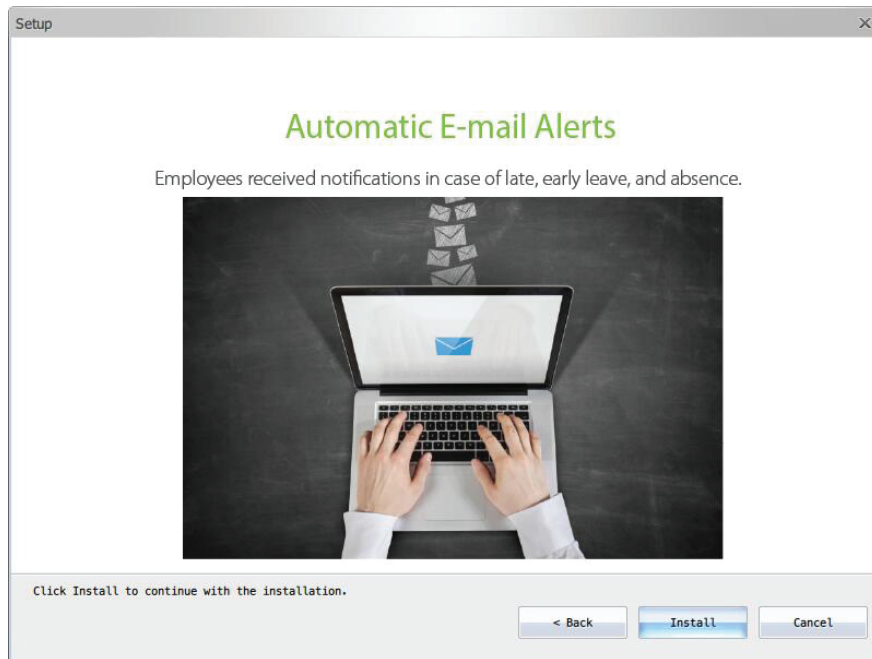
*If **No Database**, continue the installation and configure the database later.



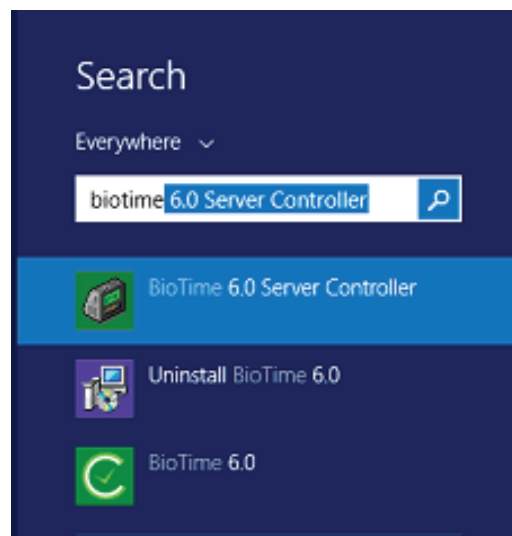
Step 7: Configure the database.



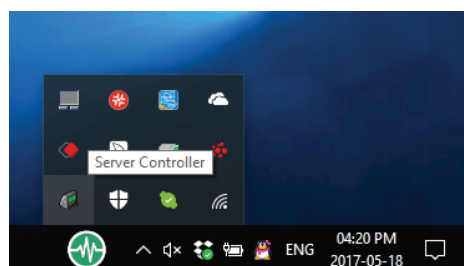
Step 8: Click Install.



After installing, run the **BioTime 6.0 Server Controller** from your computer Start menu.



Below the taskbar, right click on server controller → service settings → restart services.
Then open BioTime 6.0 software hompage.

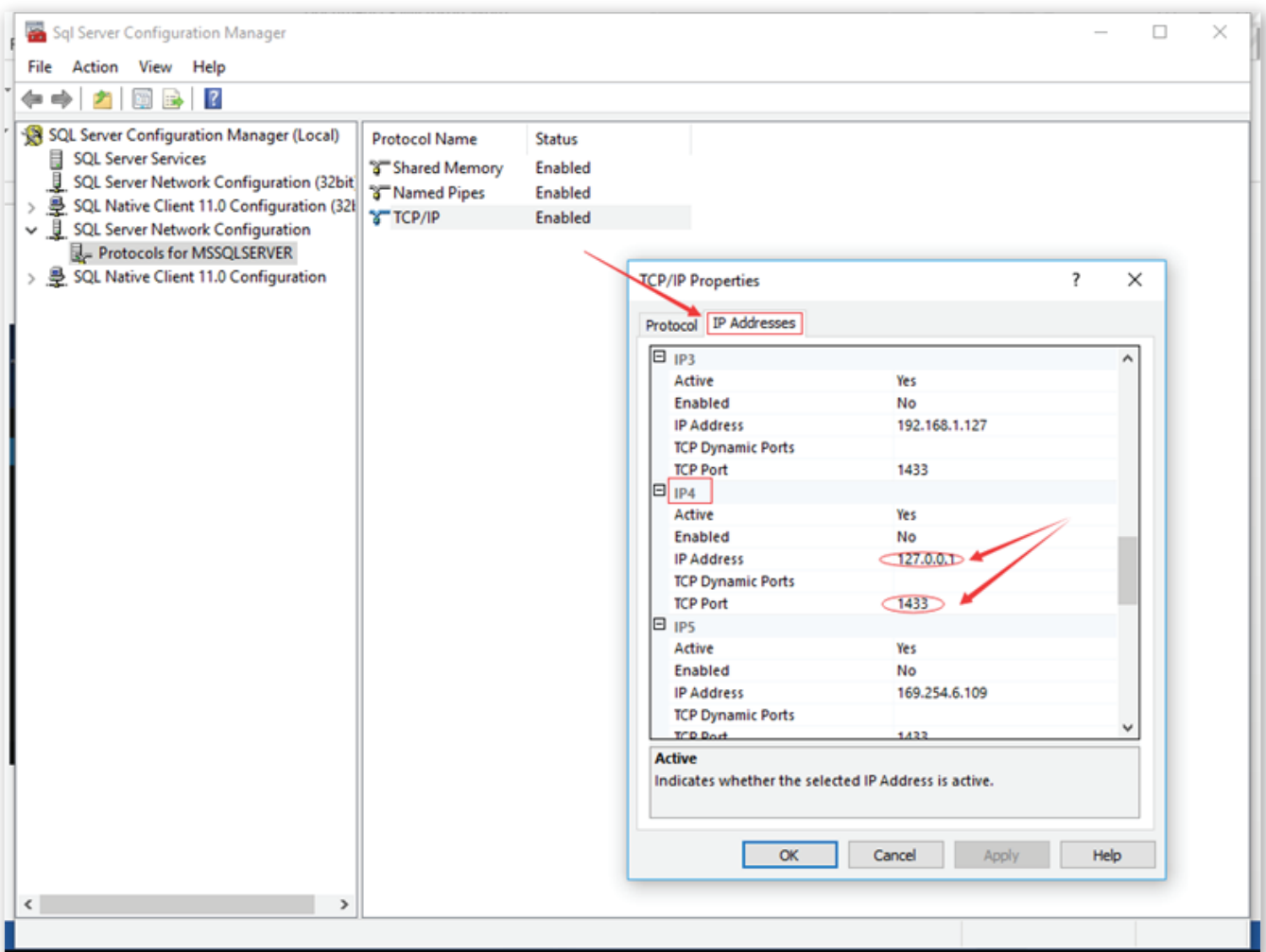


SQL Server Configuration with BioTime 6.0

*When you install MS SQL Server, choose Mixed Mode Authentication.

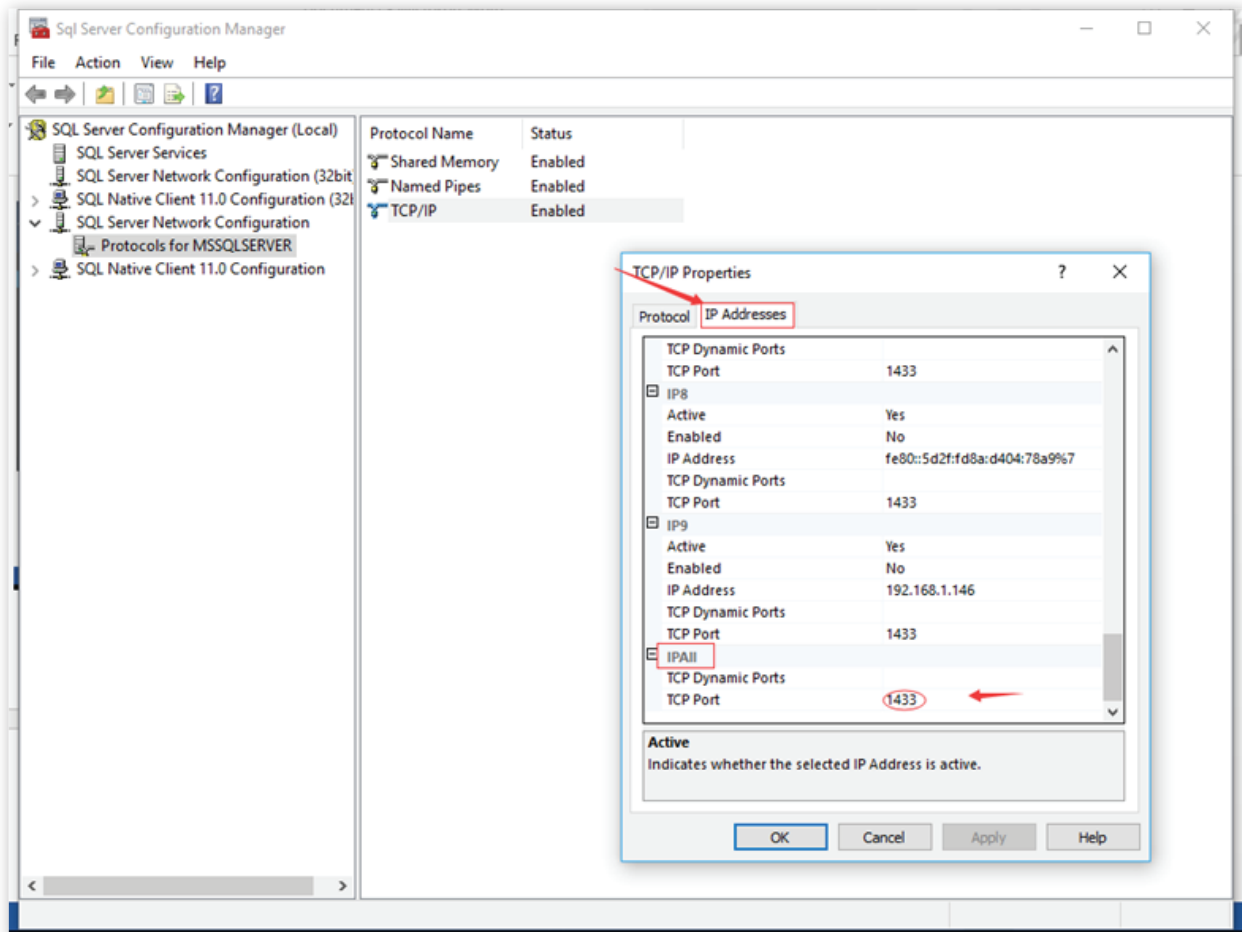
Start → SQL Server Configuration Manager → Protocols for MS SQL SERVER

Right click on TCP/IP → Enable TCP/IP



IP Addresses → IPAll

In "IPAll" configuration, empty the values in the 'TCP Dynamic Ports' and type **1433** in the TCP Port.

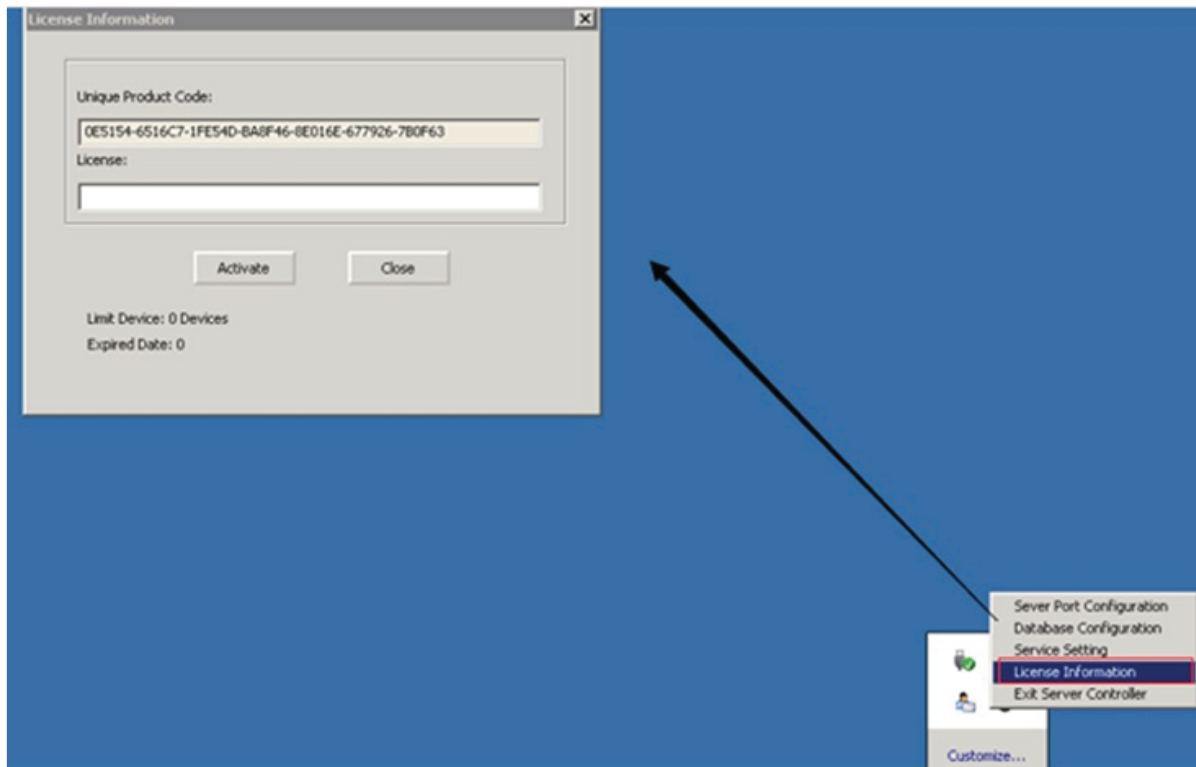


Click OK.

Then restart the SQL services.

Unique Product Code (UPC) Generation

To find the Unique Product Code, right click the server controller license information. Then copy the UPC and send to sales-in-charge.





ZKTeco Middle East

Office 1207, Floor 112, Arenco Tower, Media City, Dubai, U.A.E.

Tel: +971 4 3927649 | Fax: +971 4 3792752

E-mail: zk_me@zkteco.com | Web: www.zkteco.me