

# ProCapture-T

## Fingerprint Access Control Terminal



**ProCapture-T** is an access control terminal applying the most advanced SilkID fingerprint sensor. Its outstanding performance provides a high identification rate towards dry, wet and rough fingers, being capable to detect alive finger for a higher security level.

The fingerprint verification speed has been dramatically increased by its optimized fingerprint algorithm and the brand new ZMM220 hardware platform, equipped with a fast 1.2GHz processor.

The touch keypad delivers a smooth and easy user operation to enroll and delete users, set device and access control parameters, etc.

Its built-in camera allows to capture user's photos and events snapshots to provide attendance evidence (optional function).

## Features



Modern Design & Interactive UI



Revolutionary SilkID Fingerprint Sensor



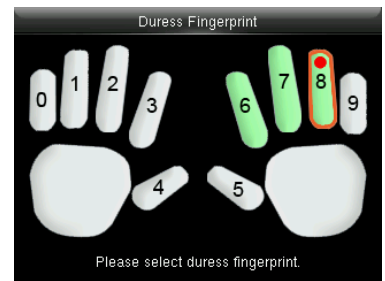
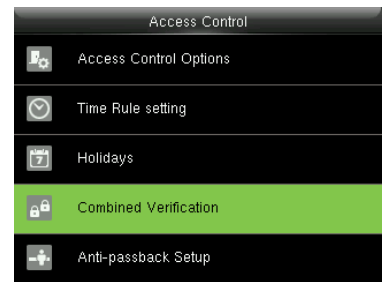
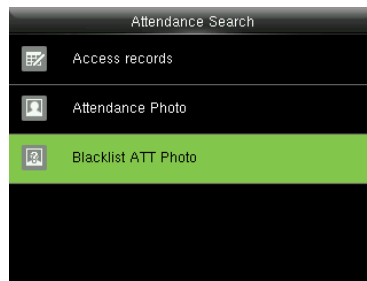
Multiple Verification Modes:  
Fingerprint / Card / Password



Outstanding Performance With  
Dry, Wet and Rough Fingers



Built In Camera  
\* Event Snapshot  
\* User Photo (Optional)



## Specifications G: GL Exclusive Feature)

### Capacity

Fingerprint	20,000
Card	20,000
Transaction	100,000
User Photo	3,000
Event Photo	7,000

### Communication

- G TCP/IP
- G RS485 (For Slave Reader)
- USB Host
- Wiegand Input / Output
- Security Relay Box

### Access Control Interface

Lock Relay Output  
Alarm Output / Auxiliary Input  
Exit Button / Door Sensor  
Doorbell Output

### Hardware

- G 1.2GHz High Speed CPU
- G Memory 128MB RAM / 256MB Flash
- SilkID Fingerprint Sensor
- 2.4 Inches TFT-LCD Screen
- 125KHz EM Reader / Mifare (Optional)
- Hi-Fi Voice & Indicator
- Tamper Switch Alarm
- G Touch Keypad
- G 120° Wide Angle Camera

### Standard Functions

Access Levels / Groups / Holidays  
DST / Bell Schedule  
Duress Mode  
Anti-Passback  
Record Query  
Custom Wallpaper & Screen Saver

### Special Functions

- G Multiple Verification Modes
- G Alive Finger Detection
- G Event Snapshot
- User Photo (Optional)
- ZK Encrypted Card
- G Fingerprint Card

### Compatibility

- Wiegand Slave Reader
- G RS485 FP Slave Reader
- ZKBioSecurity Software

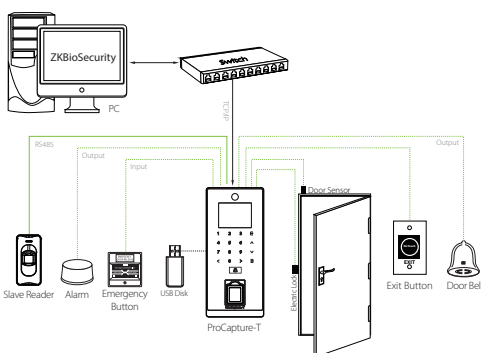
### Additional Info

Working Temperature: -10 °C ~ 50 °C  
Dimensions: 195.5 × 87 × 35 mm.  
Fingerprint Algorithm ZKFinger v1.0  
Fingerprint: FAR≤0.0001% FRR≤0.01%  
Package Includes 12V 3A Power Supply

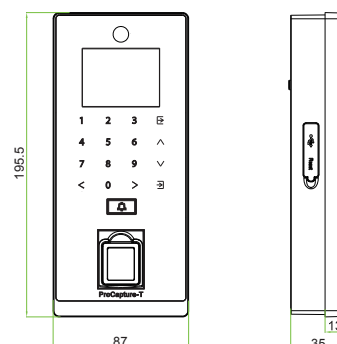
### Power

Operating Voltage 12V DC  
Current Draw < 500mA

## Configuration



## Dimensions (mm)



ZKTeco Middle East

www.zkteco.me

E-mail: zk\_me@zkteco.com



© Copyright 2016. ZKTeco Inc. ZKTeco Logo is a registered trademark of ZKTeco or a related company. All other product and company names mentioned are used for identification purposes only and may be the trademarks of their respective owners. All specifications are subject to change without notice. All rights reserved.