

# ProFP10

## Flush-Mounted RS-485 Fingerprint Reader



### Features

---

- Single gang Standard junction box installation.
- Flush-Mounted Design for neat installation.
- RS-485 Communication Interface.
- SilkID Fingerprint Sensor
- Stainless Steel Front casing.
- Fingerprint Protective Cover.
- IP65 Waterproof

# Specifications

## Additional Info

Working Temperature: -10°C ~ 45 °C  
Working Humidity: 20 ~ 95%  
Dimensions(LxWxH): 121.3 x 77.3 x 38 mm  
Algorithm: ZKFinger v10.0

## Power Supply

Operating Voltage 12V DC  
Stand-by Mode Power Consumption: 12V\*60mA=0.72W  
Peak Current of Fingerprint scanning: 140mA

## Hardware

1.0 GHz CPU  
ZKSilkID Sensor  
Buzzer Prompt  
Three-color Indicator Light

## Compatibility

inBio/inBioPro Controllers  
Standalone Fingerprint Devices

## Standard Features

125KHz RFID Card

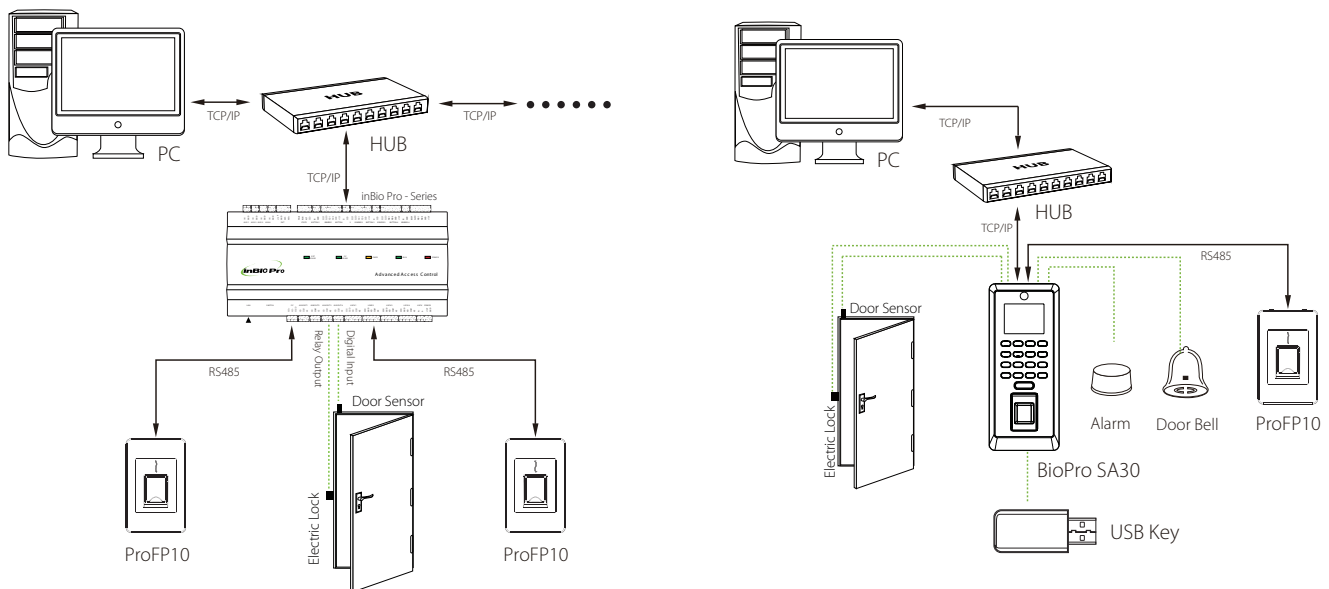
## Communication

RS485

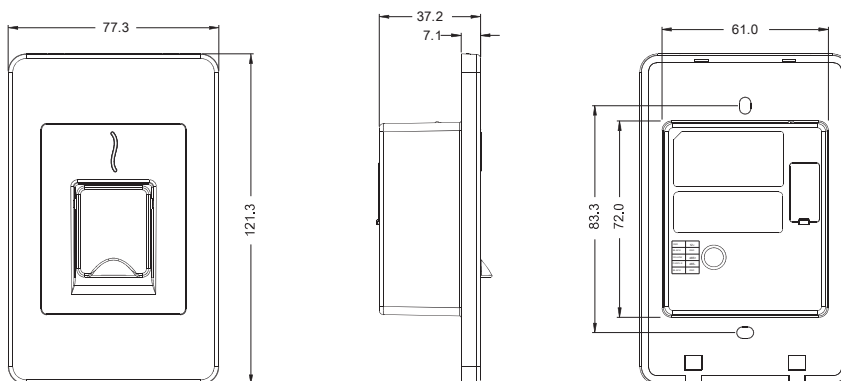
## Optional Features

125KHz HID Prox Card  
13.56MHz MifareCard(S50 / S70)  
13.56MHz HID Iclass Card

# Configuration



# Dimensions (mm)



ZKTeco Middle East  
www.zkteco.me  
E-mail: zk\_me@zkteco.com

© Copyright 2016. ZKTeco Co., Ltd.. ZKTeco Logo is a registered trademark of ZKTeco or a related company. All other product and company names mentioned are used for identification purposes only and may be the trademarks of their respective owners. All specifications are subject to change without notice. All rights reserved.

