

INSTALLATION GUIDE

BioTime 7.0

V1.1 APR 2018

SYSTEM REQUIREMENTS

Operating Systems

Windows	Microsoft Windows 7 (64-bit)/8/8.1/10 Microsoft Windows Server 2003/2008/2012/2014
Memory	2 GB (min) and above
CPU	Basic frequency more than 2 GHz
Hard Disk Space	100 GB available or above. We recommend to use an NTFS hard disk partition as the Software Installation Directory. (An NTFS hard disk partition provides better performances and higher security)

Database



ORACLE®



MS SQL Server	Microsoft SQL Server 2005/2008/2012/2014/2016 (Recommended)
Oracle	Oracle 11g
MySQL	MySQL
PostgreSQL	PostgreSQL (Default)

Web Browser



Google Chrome 33+



Mozilla Firefox 27+



Internet Explorer 11+

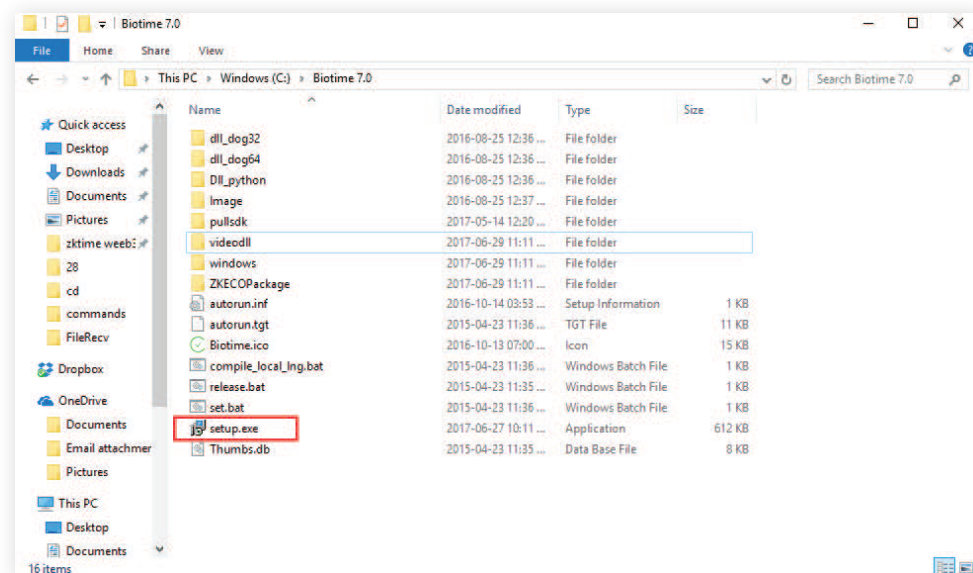
Download BioTime 7.0 Software

1. Click or copy the following link into your browser,
<http://zkteco.me/ZKTecoME/BioTimeInstallationPackage.rar>
2. BioTime 7.0 Installation Package will be automatically downloaded and will be saved to your default Downloads folder.

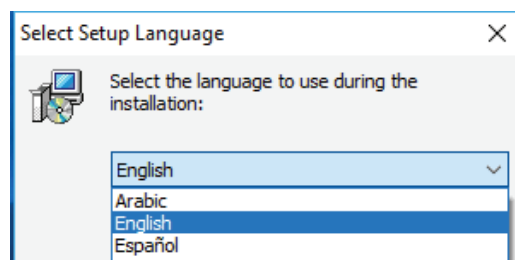
Installing BioTime 7.0 Software

Step 1: Go to your default Downloads folder and open installation package.

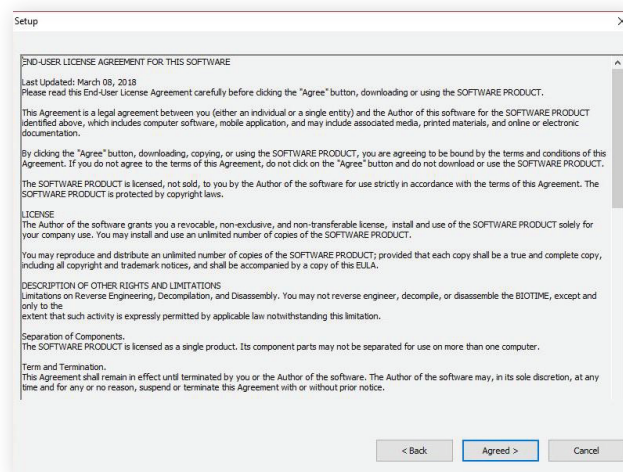
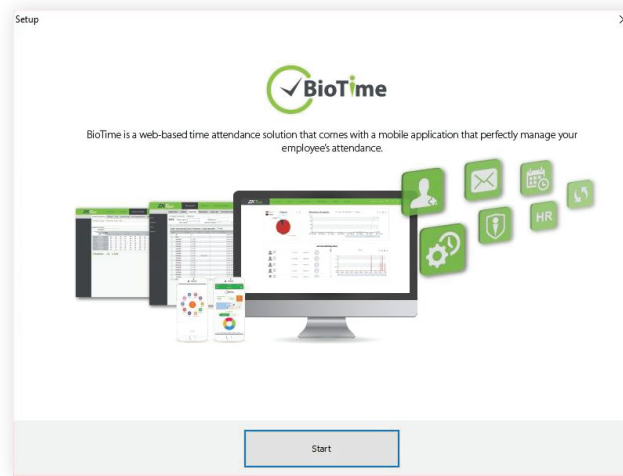
Step 2: Right click **setup.exe** and run the installation setup as administrator.



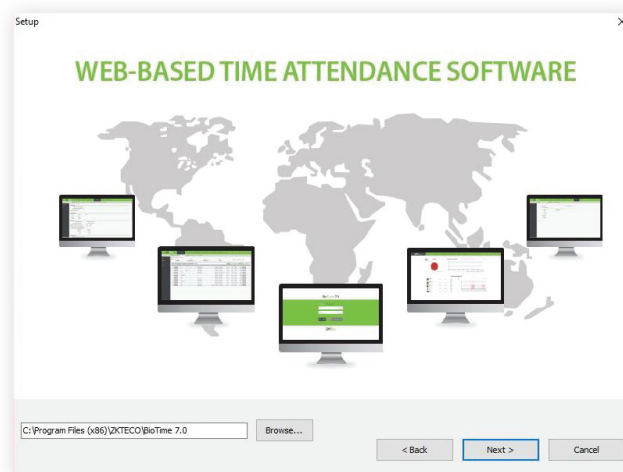
Step 3: Select the language.



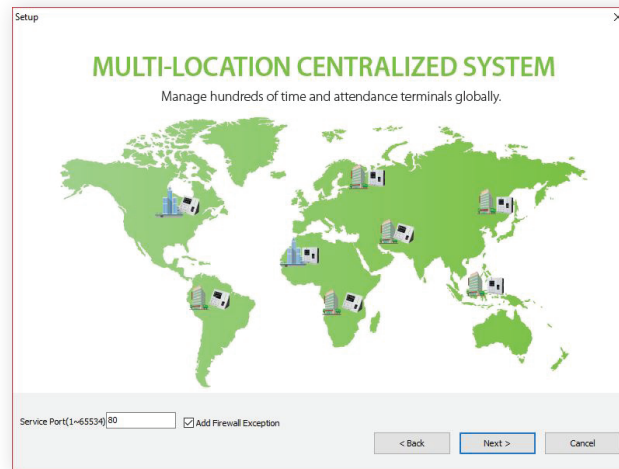
Step 4: Click **Start** button to continue the installation. Read carefully the License Agreement and click **Agreed** if you agree to the license terms and conditions or **Back** if not.



Step 5: Choose the installation file folder and click Next.

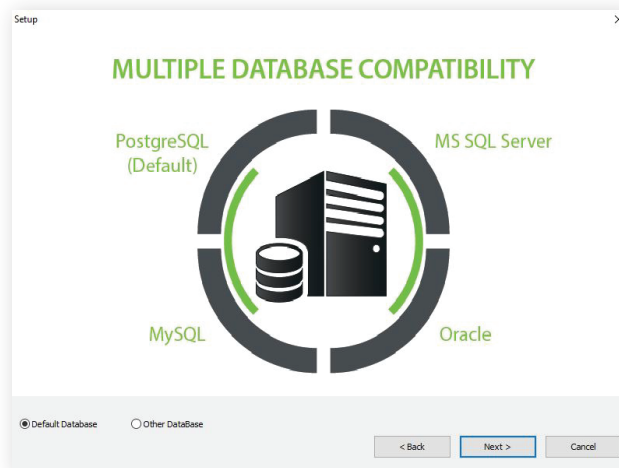


Step 6: Set the Port Number and tick the “Add Firewall Exception”.

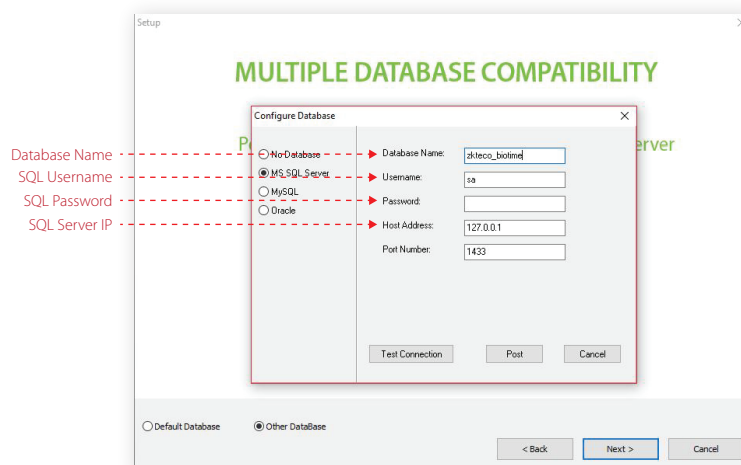


Step 7: Database Selection

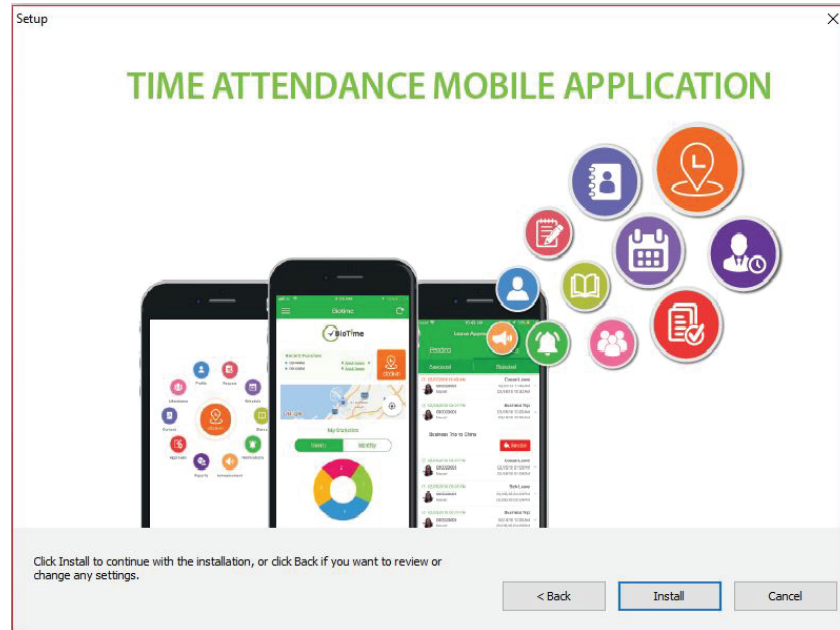
- Choose **Default Database** to install the software in the default database (PostgreSQL).
Note: You can also configure the database after installation.



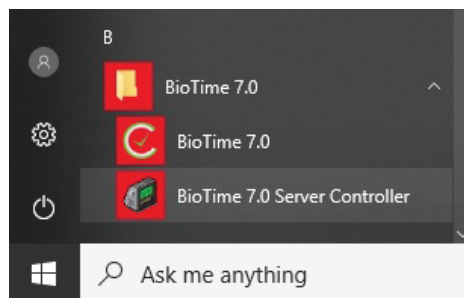
- Choose **Other Database** to configure the database.



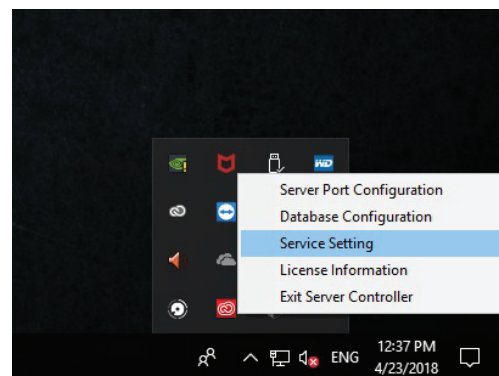
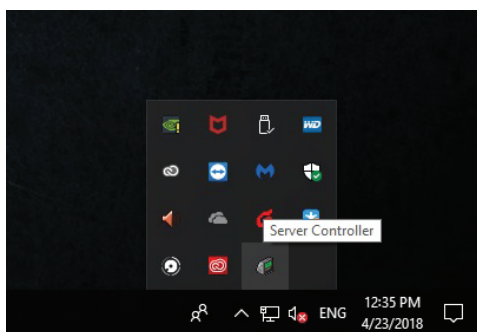
Step 8: Click *Install*.



After installing, run the BioTime 7.0 Server Controller from your computer Start menu.



Below the taskbar, right click on *Server Controller* > *Service Settings* > *Start*. Then open BioTime 7.0 software homepage.

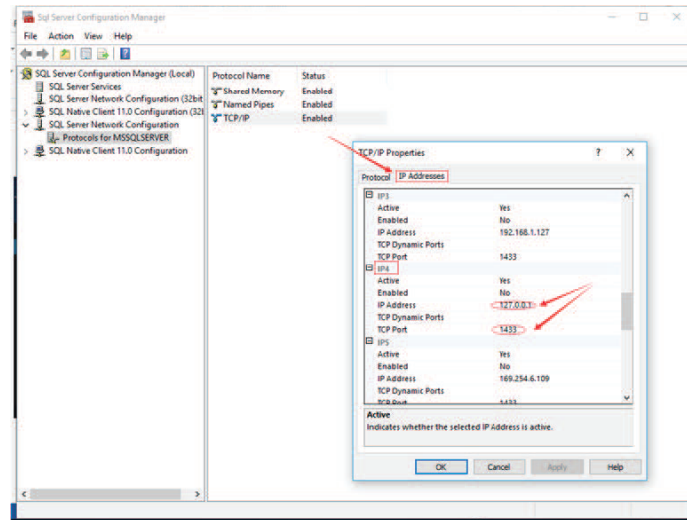


SQL Server Configuration with BioTime 7.0

**When you install MS SQL Server, choose Mixed Mode Authentication.

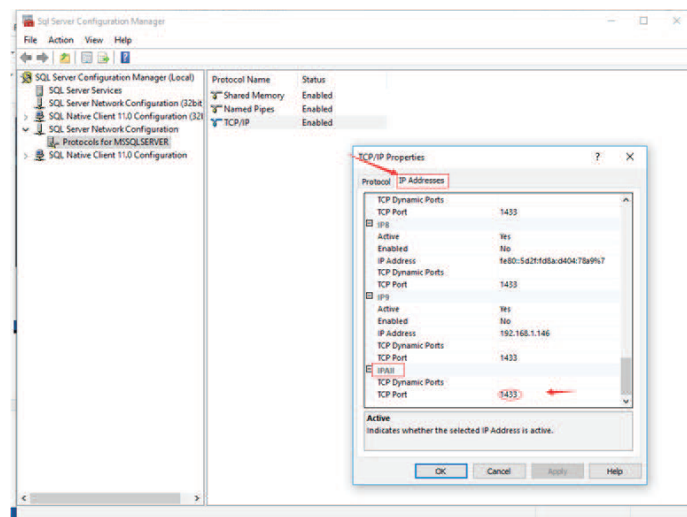
Start → SQL Server Configuration Manager → Protocols for MS SQL SERVER

Right click on TCP/IP → Enable TCP/IP



IP Addresses → IPAll

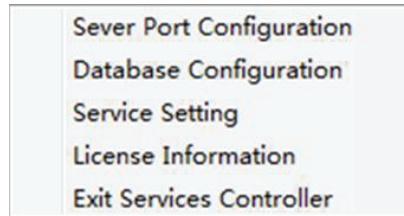
In "IPAll" configuration, empty the values in the 'TCP Dynamic Ports' and type 1433 in the TCP Port.



Click **OK** then restart the SQL services.

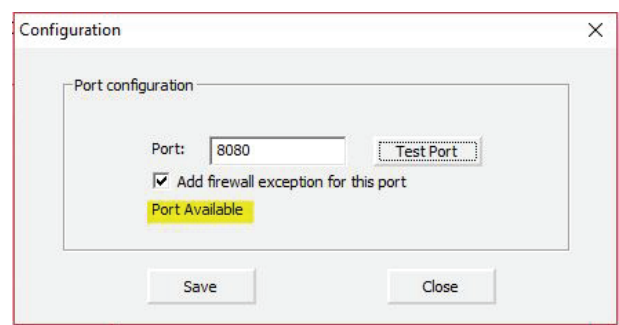
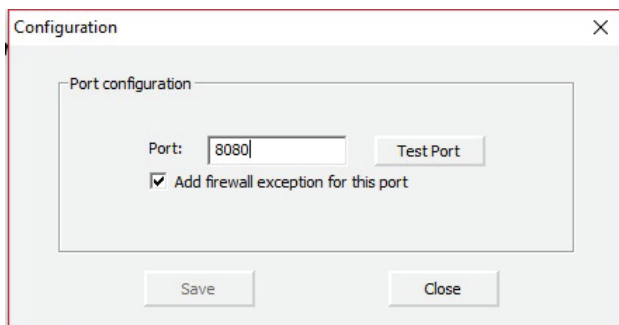
BioTime 7.0 Database Configuration

Right click *BioTime Service Controller* to see the 5 operation modules:




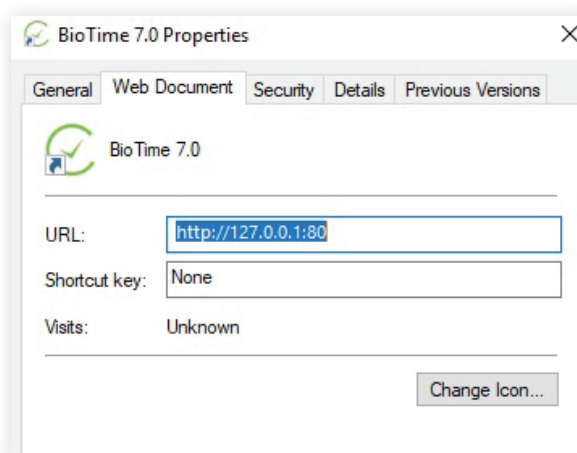
Server Port Configuration

1. Choose *Server Port Configuration* and click *Test Port* to see if the port number is available.



Note:

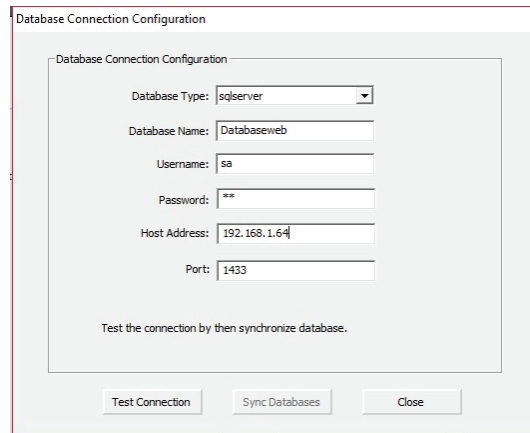
1. "Port Unavailable" means that this port is occupied. Please set another port and re-test.
2. When the port number is modified, right click the BioTime icon  on the desktop and enter Properties to change its URL (shown in the image).



Database Configuration

1. Click **Database Configuration**.

**If you have configured the database during the installation, the following page will be displayed.



Database Connection Configuration

Database Type:

Database Name:

Username:

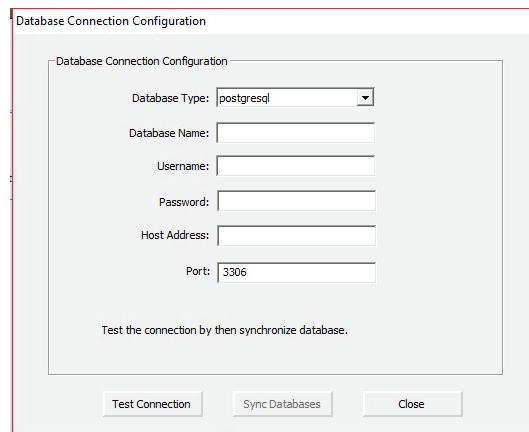
Password:

Host Address:

Port:

Test the connection by then synchronize database.

**If you have not configured the database during the installation, the following page will be displayed.



Database Connection Configuration

Database Type:

Database Name:

Username:

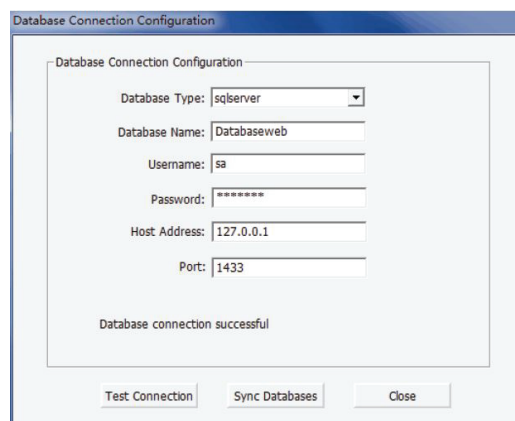
Password:

Host Address:

Port:

Test the connection by then synchronize database.

2. You need to select correct database and enter the correct parameters. Then click **Test Connection**. It will display "Database connection successful" if the connection was successfully made.



Database Connection Configuration

Database Type:

Database Name:

Username:

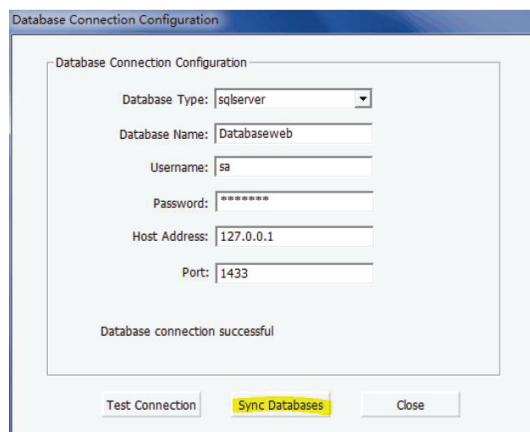
Password:

Host Address:

Port:

Database connection successful

3. Click *Sync Database*.



Database Connection Configuration

Database Type:

Database Name:

Username:

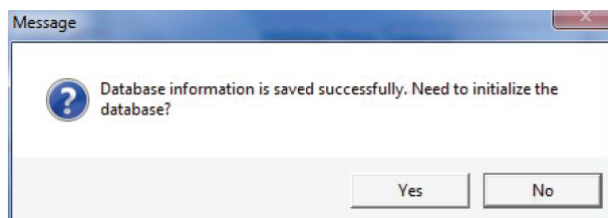
Password:

Host Address:

Port:

Database connection successful

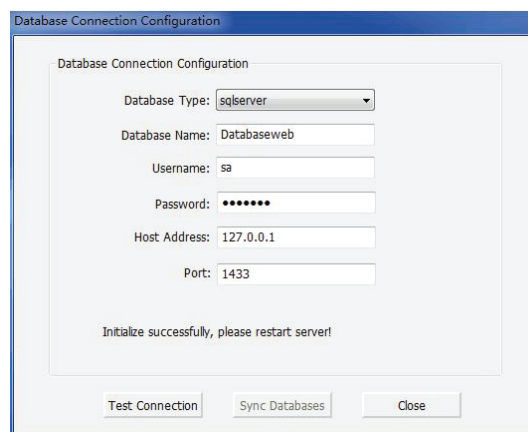
4. Click *Yes* to initialize the database or *No* to stop the initialization.



Message

Database information is saved successfully. Need to initialize the database?

5. Click *Close* and restart the Server Controller.



Database Connection Configuration

Database Type:

Database Name:

Username:

Password:

Host Address:

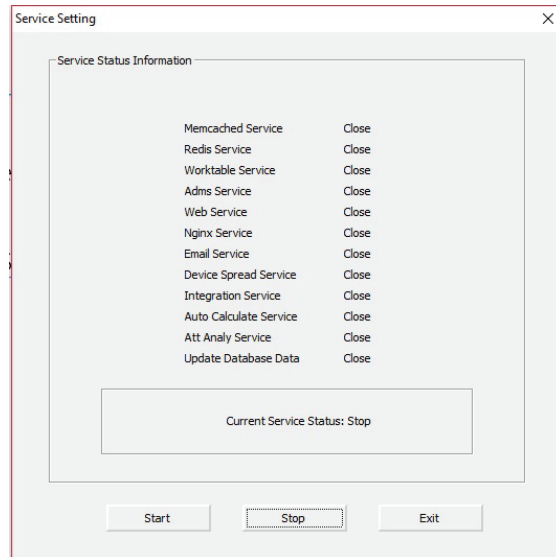
Port:

Initialize successfully, please restart server!

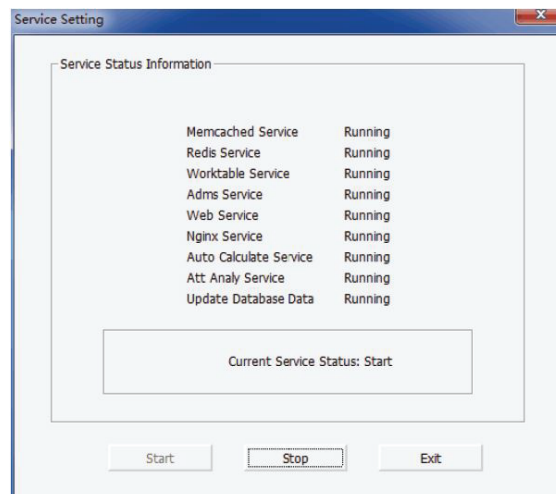
Service Setting

Click **Service Setting** to stop/start the service while there is no service running.

When there is no service running, click **Start** to start the services.

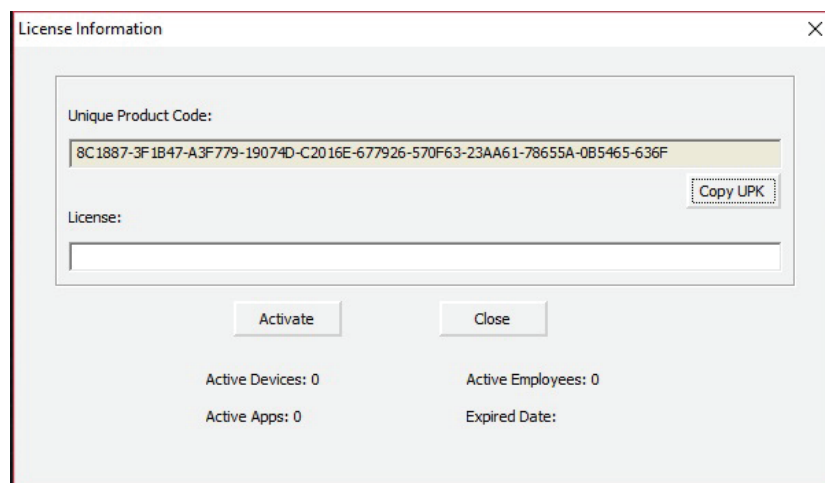
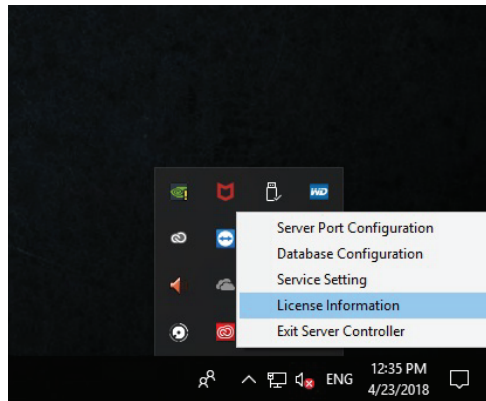


When there is (are) service(s) running, click Stop to stop the services.



License Information

To find the Unique Product Code, right click the *BioTime Server Controller* and choose *License Information*. Then copy the UPC and send to sales-in-charge.



For any clarifications regarding the Installation Guide, please contact us through e-mail at **softwaresupport@zkteco.com**.

ZKTeco Middle East

Office 1207, Floor 112, Arenco Tower, Media City, Dubai, U.A.E

Tel. No: +971 4 3927649

E-mail: zk_me@zkteco.com

www.zkteco.me

