



ZKBioSecurity

All in One Biometric Security Advanced Solutions



ZKBioSecurity is the ultimate “All in One” web based security platform developed by ZKTeco. It contains multiple integrated modules: access control, time attendance, elevator control(online/offline), hotel module, visitor management, parking, guard patrol and video linkage. With an optimized system architecture designed for high level biometric identification and a modern-user friendly UI, ZKBioSecurity provides the most advanced solution for a whole new user experience.

Features:



All-In-One Biometric Security Solution



Web-Based Platform



Data Auto-Backup Function



Extra Large Doors Management Capacity



Email Notifications



Time Zone Settings for Exit Button and Auxiliary Input



Time & Attendance



Hotel Module



Offline Elevator Control



LPR Camera for Parking



Support ONVIF Surveillance Device



Online Guard Patrol



Flexible Verification Modes



Door Activation or Deactivation



Global Anti-Passback and Linkage



Mobile APP



Visible Light Facial Recognition



Identity Documents OCR

Functions

- Web-based All-In-One solution. Simple Structure and Smooth Workflow.
- Up to 2,000 doors in Single Server and unlimited doors in Multi-Server.
- Stable and Consistent Communication with the Hardware.
- Supports Flexible ZKBioSecurity Mobile APP for various Operations.
- Advanced Access Control Features (Global Anti-Passback, GlobalLinkage, Global Interlock, etc.).
- Supports T&A Devices, Doors and LPR Camera to Generate the T&A Logs.
- Supports both LPR Camera and UHF Readers for the Parking System.
- Video Integration Compatible with 3rd party devices.
- Integrated with Arteco Video Software and C2P Middleware and connect with Milestone.
- Alarms and Events Email Notifications.
- Supports Card printing/ Badge Printer/ QR code and barcode Scanner.
- Flexible 3rd Party API and AD Integration to Integrate with 3rd Party Software.
- Audit Log Monitoring.

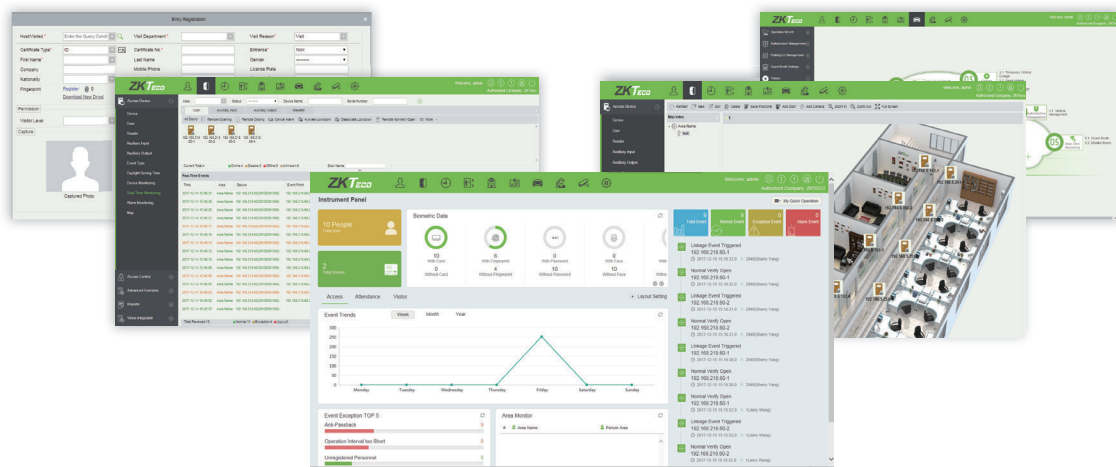
Software Specifications:

Latest Version	3.1.5.0_R (2018.11)
Pervious Version	3.1.0.0_R
System Architecture	Server/Browser
Door Capacity	2,000 Single Server/Unlimited Doors Multi-Server
User Capacity	30,000*
Database	PostgreSQL (Default), MS SQL Server & Oracle (Optional)
Supported OS	Windows 7/8/8.1/10/Server 2008/2012 (32/64)
Suggested Browsers	IE 11+/Firefox 27+/Chrome 33+

* Minimum PC Requirements:

CPU	Dual core processor with speeds of 2.4GHz or more
Memory	4GB or Above
Storage	30GB Free Space or More. (NTFS Recommended)
Monitor Resolution	1024 x 768 or Above

* Please refer to the server configuration suggestion file according to your requirements.





What's new in v3.1.5.0?

- ZKBioSecurity Mobile APP 2.0 includes more modules such as Access Control, Visitor Management, Parking and T&A (Self-login).
- Newly added more API interfaces in different modules, including Elevator Control, Visitor Management, Parking and T&A.
- Supports visible light facial recognition device FaceDepot-7A in Access Control module.
- Supports personnel number occupancy control in Who is inside.
- Supports configuring standalone device as the reader of the controller.
- Supports LCD screen to show personnel entry and exit information when integrated with turnstiles in the lobby.
- Upgraded Green Label Standalone device firmware supports more functions such as advanced access control, remote registration, etc.
- Supports FD1043V/ FD1032V/ FD1032H/ FD1021H (android smart device with different size screen and visible light facial recognition) in T&A module.
- Supports approval flow management feature for T&A module.
- Newly added more advance features for visitor management module.
- Supports Desko PENTA scanner, can be used with Acuant OCR to support recognition of identity documents such as ID cards, passports, driver licenses, visas, etc. from over 190 countries and all 50 US states.
- Supports ZKTeco new series of IP camera and NVR.
- Improved security levels for software and firmware.

ZKBioSecurity Mobile APP Download

