

# Installation Guide

## ZKBioAccess

---

Version: 1.0

Date: January 2019

# Contents

- Before Installation..... 1
  - Configuration Requirements..... 1
  - Operating System..... 1
- Installation Steps.....2

# Before Installation

## Configuration Requirements

**CPU:** Master frequency of 2.0G or above

**Memory:** 4G or above

**Hardware:** Available space of 10G or above. We recommend using NTFS hard disk partition as the software installation directory

**Monitor Resolution:** 1024\*768 pixel or above

## Operating System

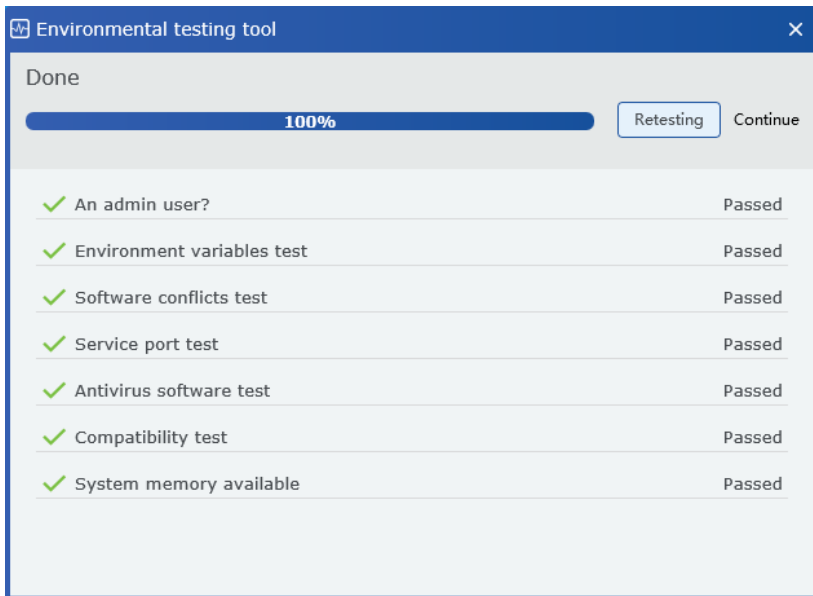
**Supported Operating Systems:** WindowsXP/ Windows7/ Windows8/ Windows8.1/ Windows Server 2008(32/64)

**Supported Databases:** PostgreSQL

**Recommended browser version:** Internet Explorer11+/ Firefox27+/ Chrome33+

# Installation Steps

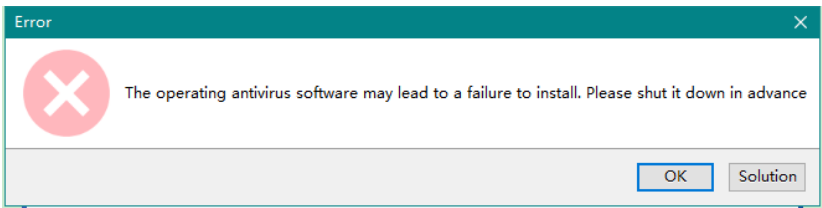
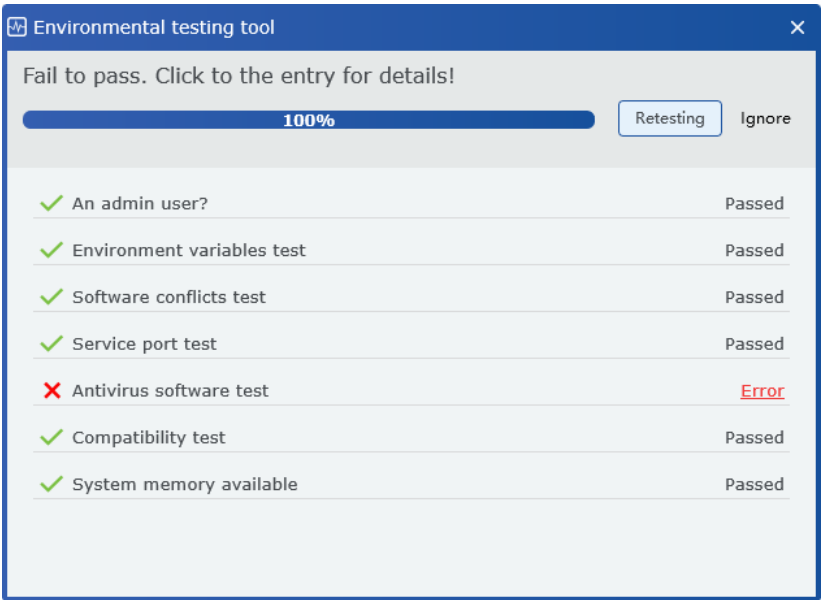
1. Right click the step.exe in the installation package, select Run as Administrator: This is the Environmental testing tool, can check out whether your computer conforms to the installation standards of the software.



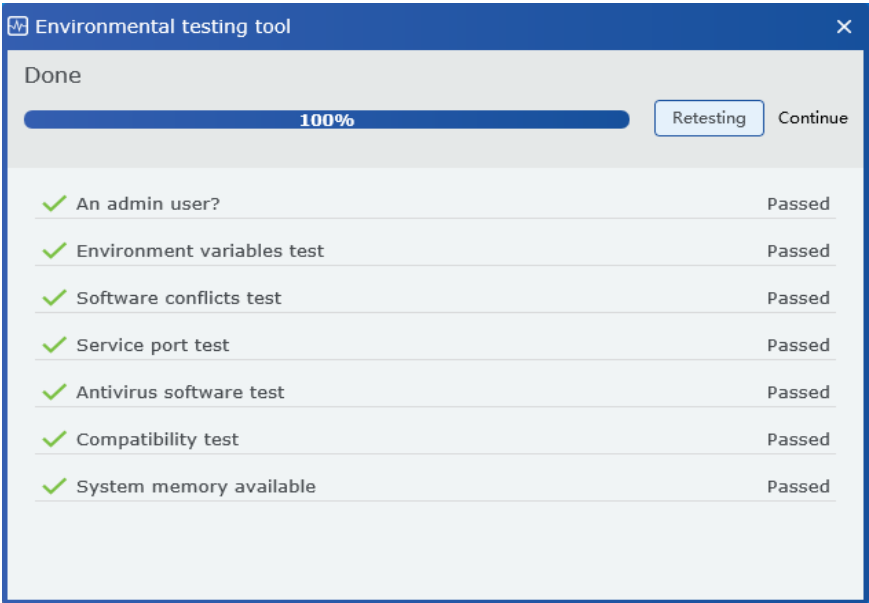
## Note:

- Before installing, please disable antivirus software in the system.
- If the % SystemRoot % \ system32 does not exists in the environment variable path, please add.
- When ports occupied, please make modifications.

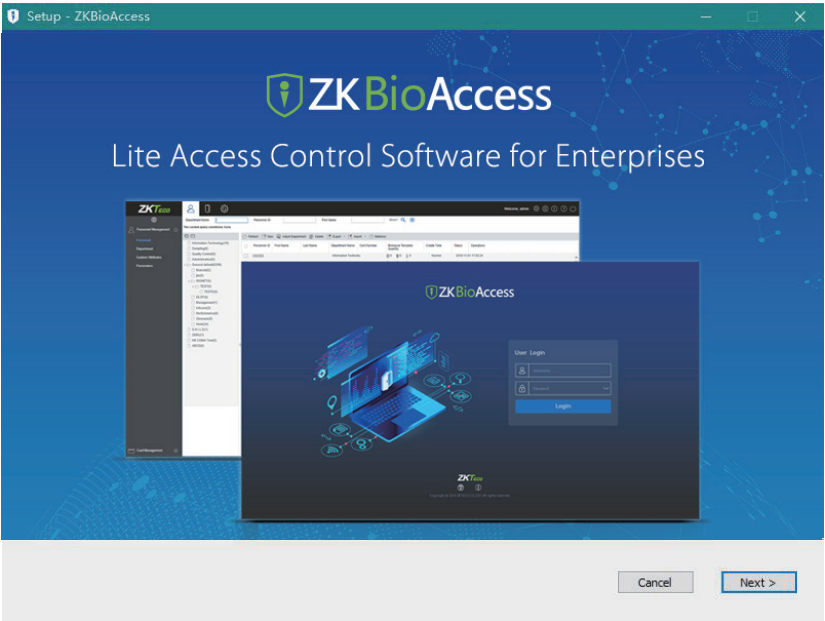
If there is anomaly detection, the interface will give corresponding tip:



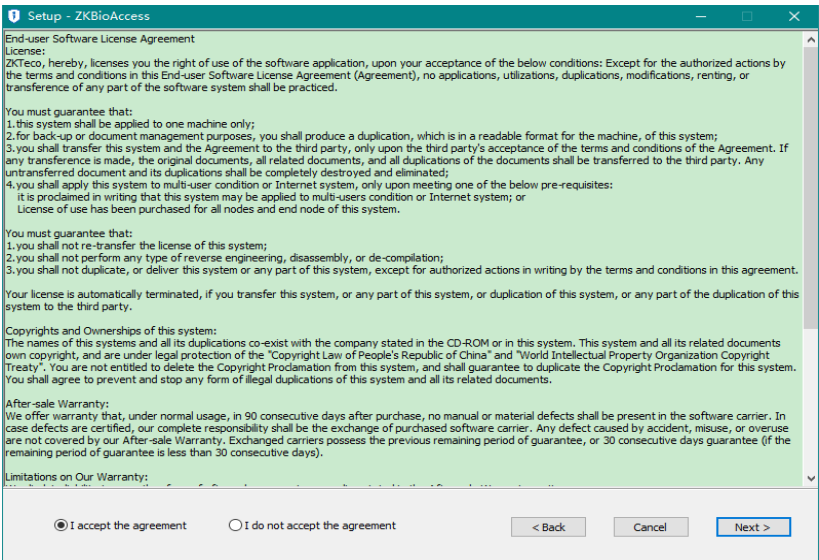
2. If there is no anomaly detection, click [Continue]:



3. Click [Next]:

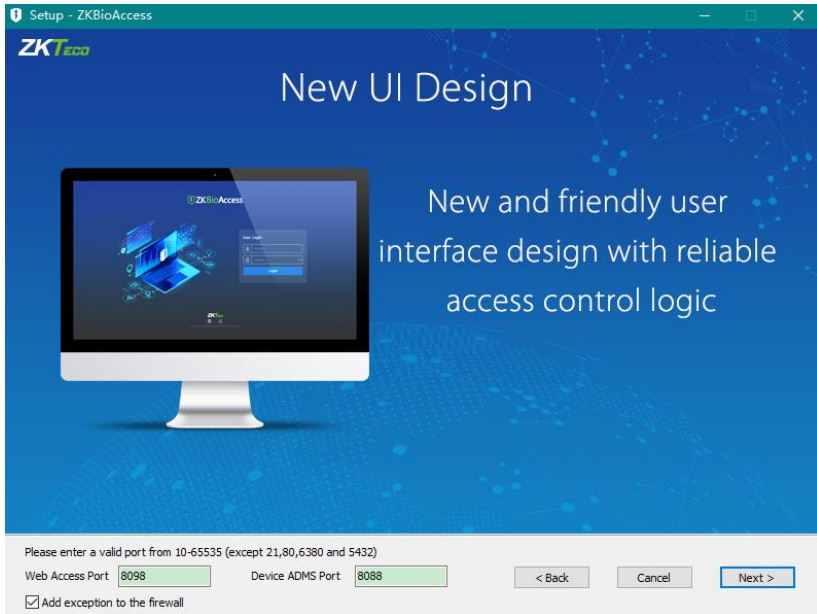


4. Select I accept the agreement, click [Next]:





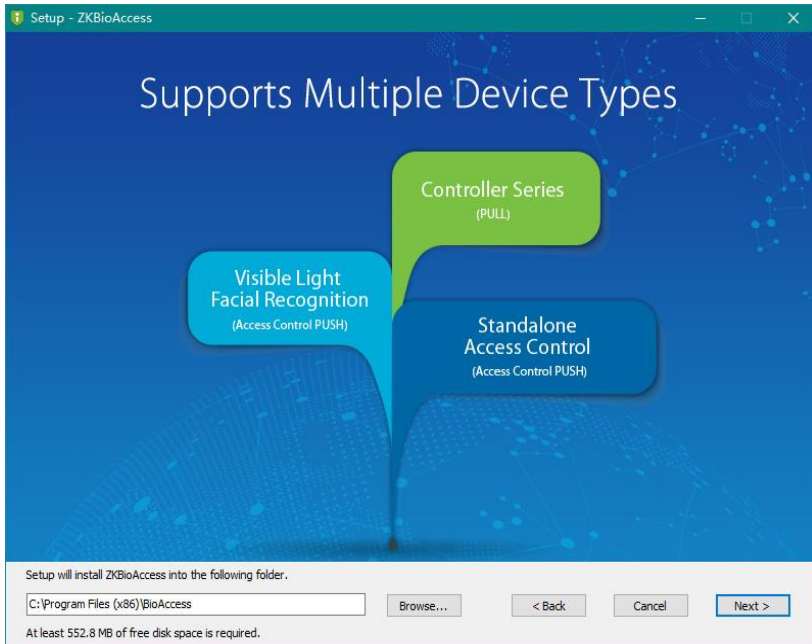
5. Set the port:



**Note:**

- Web Access Port is used to access the website and Device ADMS port is used to connect to the device. you can define by yourself except 21,80,6380 and 5432.
- Device ADMS Port is 8088 by default. If the port is occupied, please modify but avoid occupied port. It can't be same with database port 5432 and redis port 6380 and 21,80.
- Check Exception for adding firewall box to avoid preventing the program running.

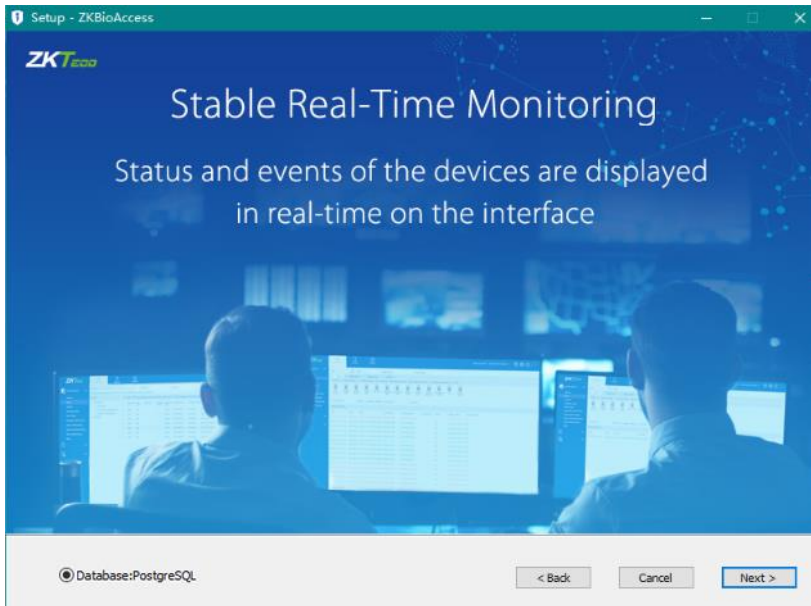
6. Click [Next] to select installation path:



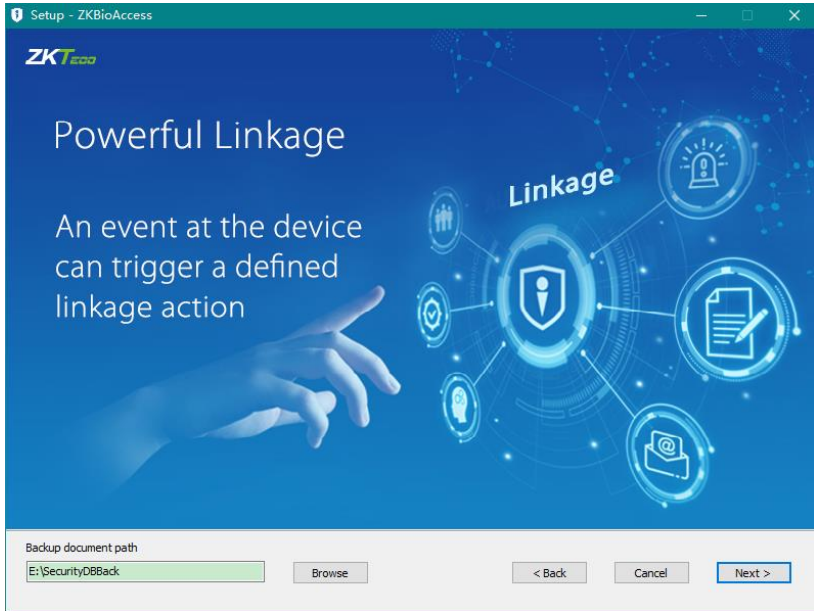
**Note:**

- You can select the installation path as you wish.
- The software requires at least 500M space, please ensure the installation path you selected has enough space.

7. Database page, only support PostgreSQL.



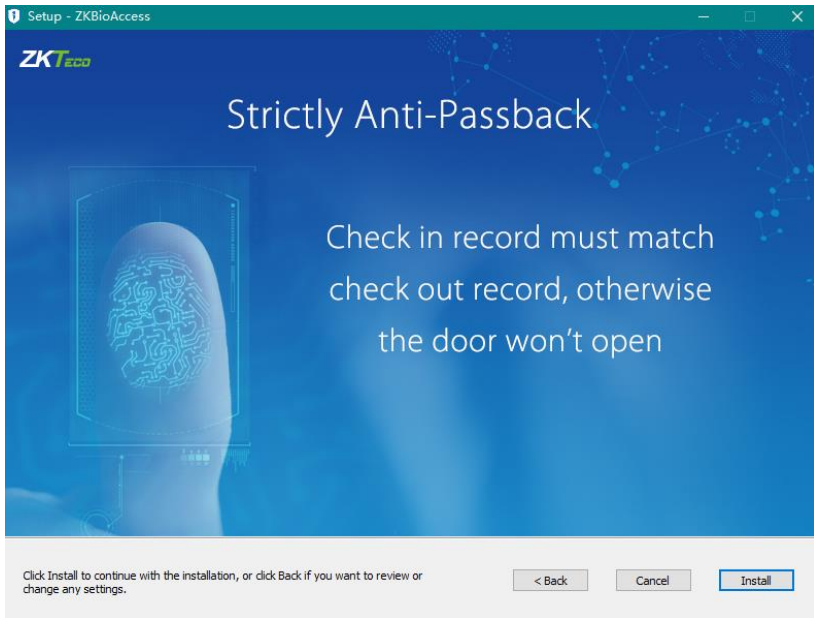
8. Click [Next] to set backup document path:



**Note:**

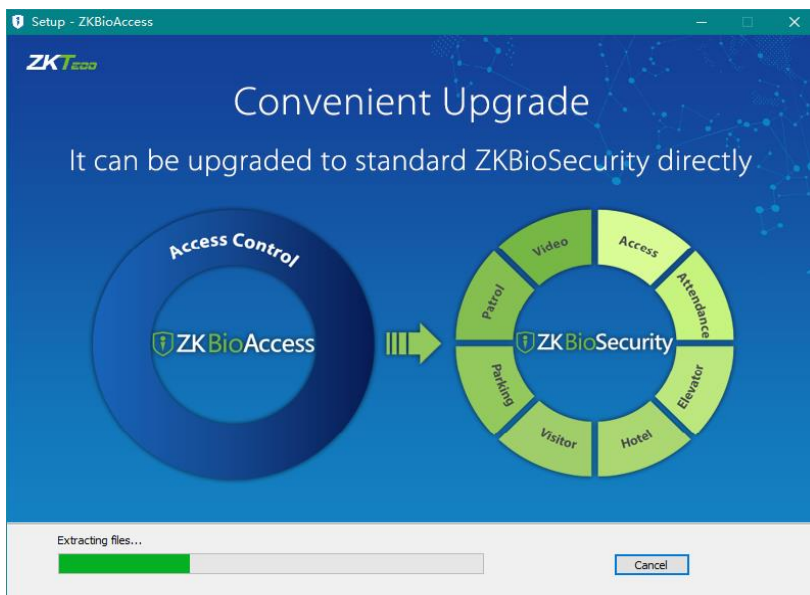
- Software will scan the disk then find the largest available drive space to create a folder named SecurityDBBack.
- You can select the installation path as you wish.

9. Click [Next]:

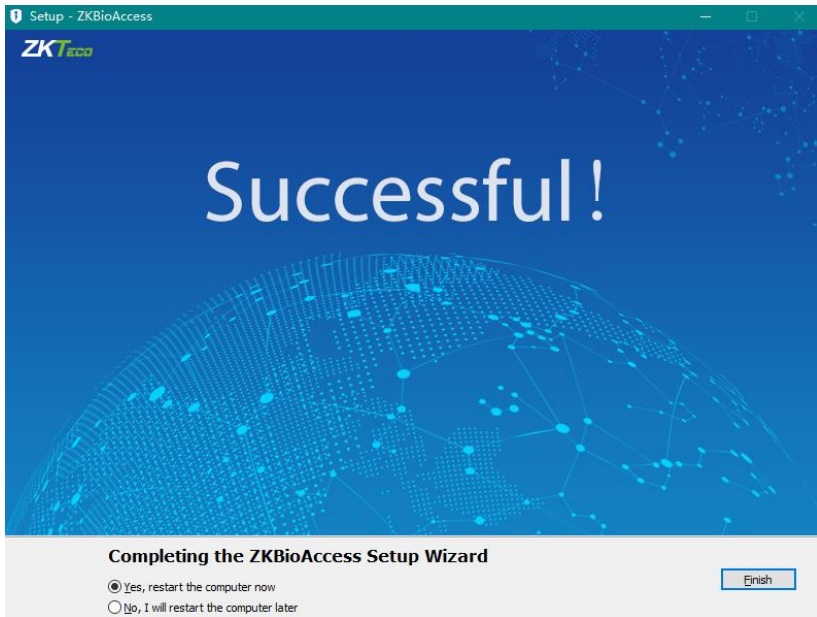


**Note:** Click [Cancel] to quit the installation, click [Back] to reset the settings.

10. Click [Install] to start installing:



11. Waiting for the software to complete the installation, click [Finish], restart the server to complete the installation.



ZK Building, Wuhe Road, Gangtou, Bantian,  
Buji Town, Longgang District, Shenzhen  
China 518129

Tel: +86 755-89602345

Fax: +86 755-89602394

[www.zkteco.com](http://www.zkteco.com)

