



# Installation Guide

ZKBioSecurity

[www.zkteco.com](http://www.zkteco.com) 

## Contents

Before Installation .....	I
Configuration Requirements.....	1
Operation System.....	1
Installation Steps.....	2
Technical Support.....	13

# Before Installation

## Configuration Requirements

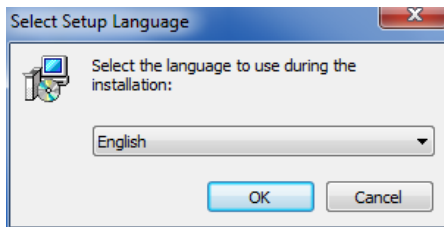
- CPU: Master frequency of 2.0G or above.
- Memory: 4G or above.
- Hardware: Available space of 10G or above. We recommend using NTFS hard disk partition as the software installation directory.
- Monitor Resolution: 1024\*768 px or above.

## Operating System

- Supported Operating Systems: WindowsXP/Windows7/Windows8/Windows8.1/Windows Server 2008(32/64)
- Supported Databases: PostgreSQL
- Recommended browser version: Internet Explorer11+/Firefox27+/Chrome33+

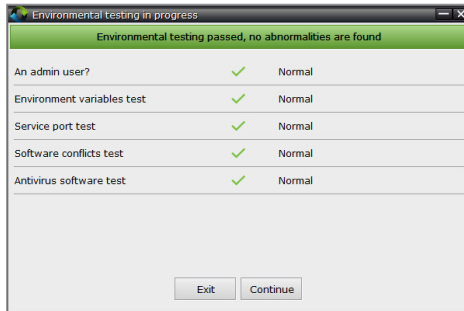
## Installation Steps

1. Right click the **Setup.exe** in the installation package, select **Run As Administrator**:



Note: System supports simplified Chinese, English and Spanish. Click the drop-down box to choose suitable language and click **【OK】** .

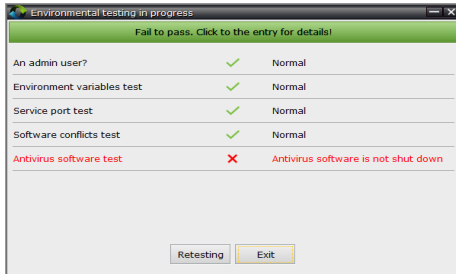
## 2. Environment Testing:



Note:

- Before installing, please disable antivirus software in the system.
- If the % SystemRoot % \ system32 does not exists in the environment variable path, please add.
- When ports occupied, please make modifications.

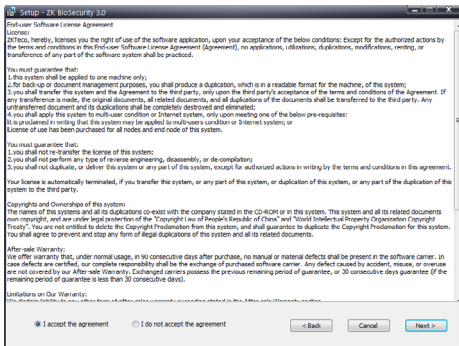
- If detected the machine has been installed the same type of low version of software, it will prompt that the original software related services will stop if continue installing. After Continuing installing the software, the system will automatically migrated to a new database from the original software database. Currently only support ZKAccess5.2 data migration.
- If there is anomaly detection, the interface will give corresponding tip, Click the error area, related explanation will pop-up.



3. There is no anomaly detection, click **【Continue】** :



4. Click **【Next】** :



5. Select **I accept the agreement**, click **【Next】** , setup sever port:





Note: Server port is 8088 by default. If the port is occupied, please modify but avoid occupied port. It can't be same with database port 5432 and redis port 6380.

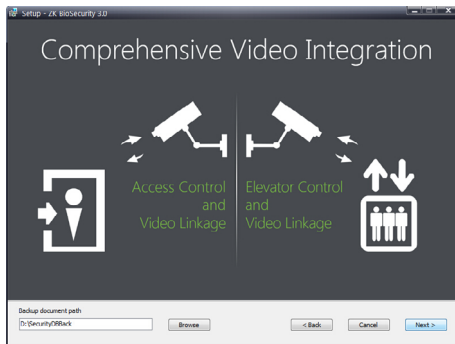
Check **Exception for adding firewall** box to avoid preventing the program running.

6. Click **Next** to select installation path:



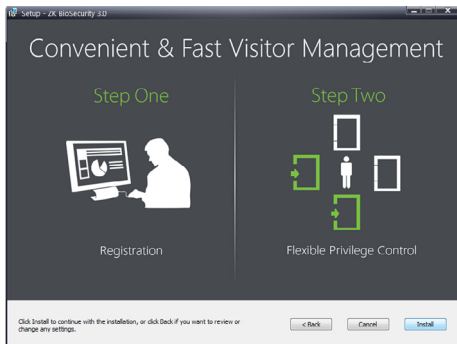
Note: You can custom the installation path. The software requires at least 584.2 M space, please ensure the installation path you selected has enough space.

7. Click **【Next】** to setup backup document path:



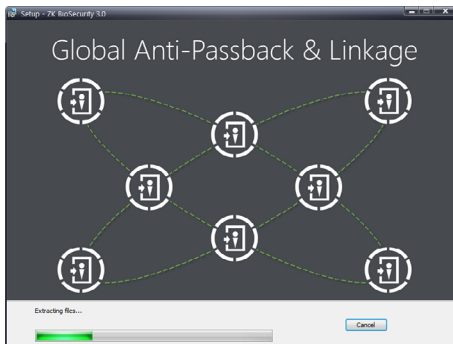
Note: System scan to position to the largest available drive space and new a folder named securitydbbak. You can also custom the path.

8. Click **【Next】** :

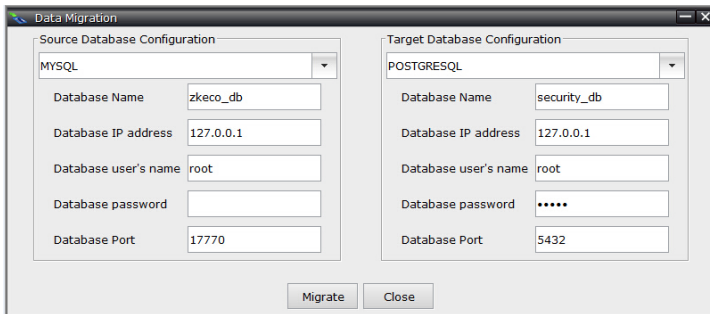


Note: Click **【Cancel】** to quit the installation, click **【Back】** to reset the settings.

9. Click **【Install】** :



Note: If the system has been installed ZKAccess5.2 or 5.3, the data migration will be carried out. In the migration, the system will read ZKAccess5.2 or 5.3 database configuration file and the connection parameters. As shown in the figure below:



The image shows a 'Data Migration' dialog box with two main sections: 'Source Database Configuration' and 'Target Database Configuration'. The 'Source' section is for a MySQL database named 'zkeco\_db' on IP '127.0.0.1' at port '17770' with user 'root'. The 'Target' section is for a PostgreSQL database named 'security\_db' on IP '127.0.0.1' at port '5432' with user 'root'. Both sections have password fields. At the bottom are 'Migrate' and 'Close' buttons.

Source Database Configuration		Target Database Configuration	
Database Type	MYSQL	Database Type	POSTGRESQL
Database Name	zkeco_db	Database Name	security_db
Database IP address	127.0.0.1	Database IP address	127.0.0.1
Database user's name	root	Database user's name	root
Database password		Database password	.....
Database Port	17770	Database Port	5432

Click **【Migrate】** . In the migration , the target database will be backed up. If the migration fails, it will revert to the old database automatically.

10. The installation is done.



## Technical support

Any questions, welcome to call our technical service hotline:

**4006-900-999**

Hotline: 0755-84553302

Website: <http://www.zkteco.com>



