



ZKBioSecurity

All in One Solution



ZKBioSecurity3.0 is the ultimate "All in One" web based security platform developed by ZKTeco. It contains multiple integrated modules: access control, elevator control(online/offline), visitor management, guard patrol, hotel module, T&A(ZKTime.Net3.0) and video linkage. With an optimized system architecture designed for high level biometric identification and a modern-user friendly UI, ZKBioSecurity 3.0 provides the most advanced solution for a whole new user experience.

Features:



Web Based Platform



All-In-One Solution



Many Doors
Management Capacity



Simple User Friendly UI



Email Notifications



Data Auto-Backup Function



Support 3rd Party
Video Device



Global Anti-Passback
and Linkage



Huge Data
Processing Capability



Flexible Card Format



Online Guard
Patrol Feature



Integrated with
ZKTime.Net3.0



Flexible Verification Mode



Activate or Deactivate
the Door



Time Zone Settings for Exit
button and Auxiliary Input



Hotel Module



Offline Elevator Control



Mobile APP

Function

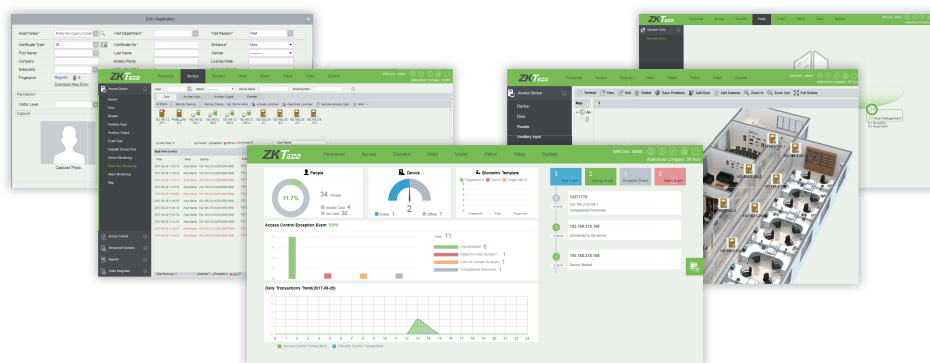
- All-In-One solution (Access Control, Elevator, Visitor, Patrol, Hotel, T&A(ZKTime.Net3.0) and Video Surveillance). Simple Structure and Smooth Workflow.
- Many Doors Management Capacity (Up to 2,000 doors in Single Server and 8,000 Multi-Server).
- Stable, Fast and Consistent Communication.
- Advanced Access Control Functions.
- Global Anti-Passback and Linkage.
- Video Integration Compatible with Third Party Device.
- Automatic Data Backup.
- Alarms and Events Email Notifications.
- System Log Monitoring System.
- Supports InBio Pro Access Control Panels and Green Label Product Series.
- Card Printing function.
- Supports badge printer, QR code & barcode scanner.
- Supports DNS/DDNS connection.
- Elevator control supports online or offline mode.
- Integrated with Arteco Video Software and C2P Video Middleware and connect with Milestone.
- ZKBioSecurity Mobile App.

Software Specifications:

Latest Version	3.0.5.0_R
Pervious Version	3.0.3.0_R
System Architecture	Server/Browser
Door Capacity	2,000 Single Server/ 8,000 Multi-Server
User Capacity	30,000*
Database	PostgreSQL (Default), SQL Server & Oracle (Optional)
Supported OS	Windows 7/8/8.1/10/Server 2008 (32/64)
Suggested Browsers	IE 11+/Firefox 27+/Chrome 33+

Minimum PC Requirements:

CPU	Dual core processor with speeds of 2.4GHz or more
Memory	4GB or Above
Storage	30GB Free Space or More. (NTFS Recommended)
Monitor Resolution	1024 x 768 or Above





What's new in v3.0.5.0?

- Support ZKBioSecurity Mobile APP to add personnel and control the doors.
- New added Hotel module can be used together with Access Control/Elevator Control module.
- Support online or offline solutions in Elevator Control.
- Support built-in API/AD integration for 3rd party system.
- Support OCR features for Indonesia and ID readers for Dubai and Malaysia.
- Support card printing function with HID Fargo/IDP printers.
- Support using QR code in Visitor module to open the door (together with turnstiles).
- Support GT/PT series and 3rd party cameras by using Onvif protocol.
- Support 3rd party video software (Arteco) and middleware (C2P/Milestone) integrations.
- Support ZK badge printer TP8016US for visitor management.
- Support switching four door one way controller to two door two way.
- Support DNS/DDNS in the new firmware for Pro Panels.
- Add license ID and improve the license activation compatibility.



ZKTECO CO.,LTD.
www.zkteco.com
E-mail: sales@zkteco.com

© Copyright 2017, ZKTECO CO.,LTD. ZKTeco Logo is a registered trademark of ZKTeco or a related company. All other product and company names mentioned are used for identification purposes only and may be the trademarks of their respective owners. All specifications are subject to change without notice. All rights reserved.